

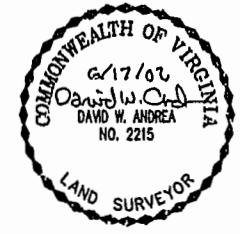
#020019595

87 PAGE 45

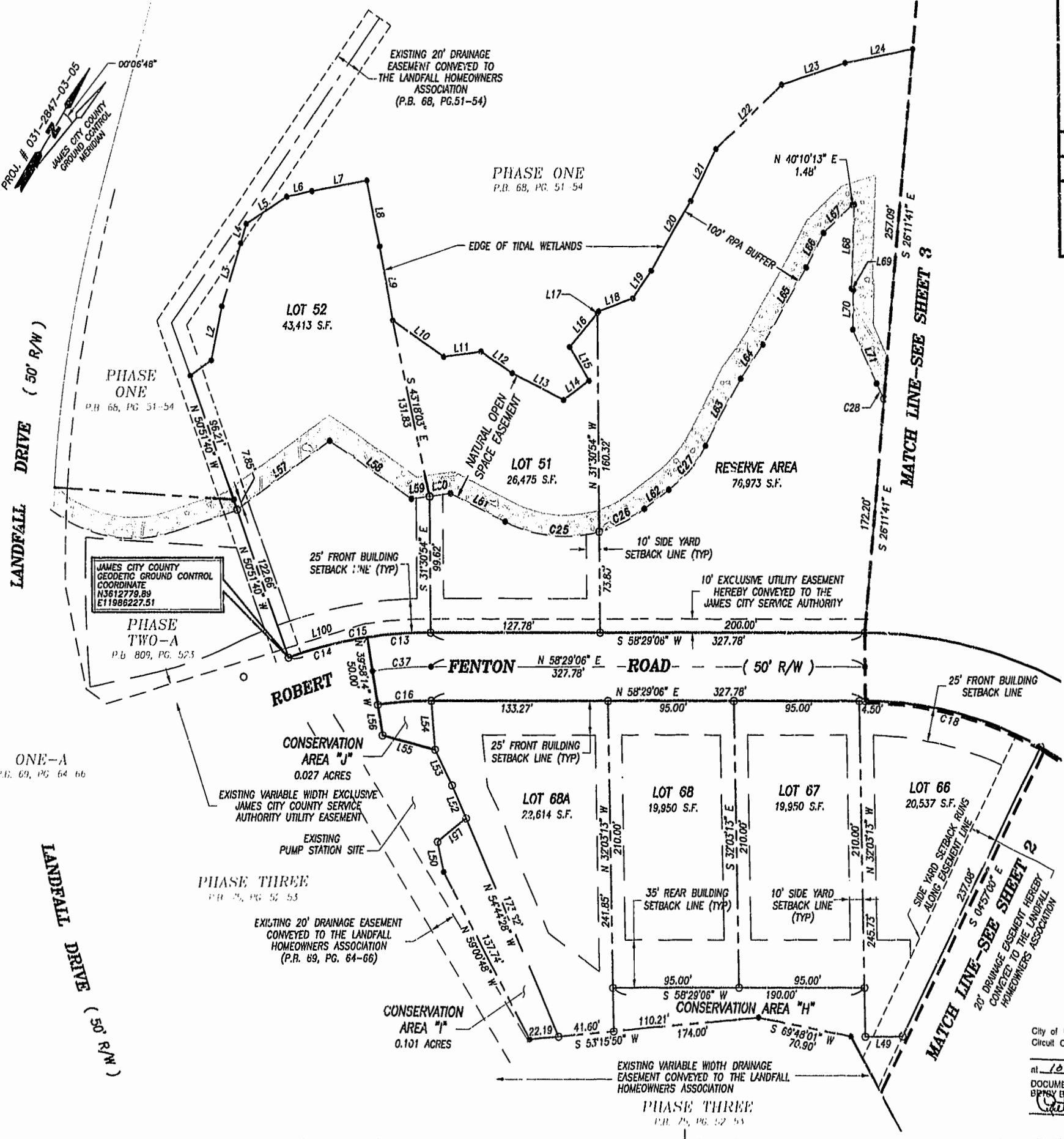
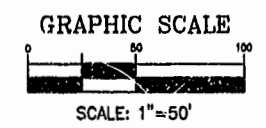
PLAT OF SUBDIVISION
LANDFALL
 AT
JAMESTOWN
 PHASE FIVE
 JAMESTOWN DISTRICT
 JAMES CITY COUNTY, VIRGINIA

DATE: 12/07/01 SHEET 4 OF 6 SCALE: 1"=50'
 PROJECT NO: 30803.00 DRAWN BY: DWP

VHB Vanasse Hangen Brustlin, Inc.
 Transportation Land Development Environmental Services
 1132 Rock Landing Drive, Suite 203
 Newport News, Virginia 23606
 (757) 873-3366 • FAX (757) 873-0757



- LEGEND**
- DENOTES IRON PIN TO BE SET
 - DENOTES ANGLE POINT
 - EXTERIOR PROPERTY LINE
 - ▭ LIMITS OF NATURAL OPEN SPACE EASEMENT



City of Williamsburg & County of James City
 Circuit Court: This PLAT was recorded on
 26 Aug 2002
 at 10:22 AM/PM, PB 27, PG 42-47
 DOCUMENT # 020019595
 BIPSY B. WOOLWIDGE, CLERK
 Betsy B. Woolwidge, Rep. Clerk

LANDFALL PH5, 95-010
 PLAT BOOK 87, PAGE 45.