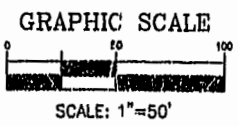


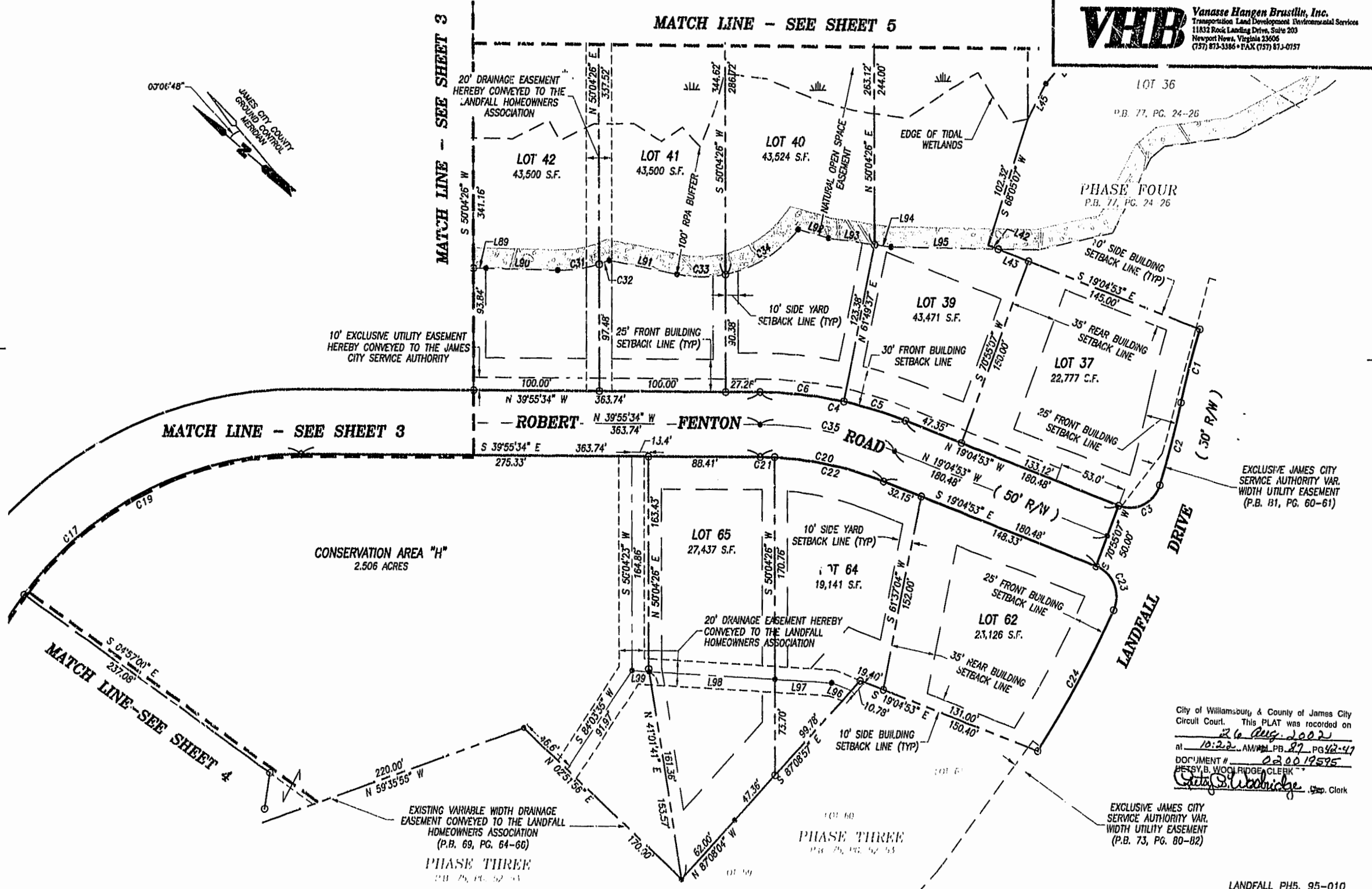
- LEGEND**
- DENOTES IRON PIN TO BE SET
  - DENOTES ANGLE POINT
  - EXTERIOR PROPERTY LINE
  - ▭ LIMITS OF NATURAL OPEN SPACE EASEMENT



**PLAT OF SUBDIVISION  
LANDFALL  
AT  
JAMESTOWN  
PHASE FIVE  
JAMESTOWN DISTRICT  
JAMES CITY COUNTY, VIRGINIA**

DATE: 12/07/01	SHEET 2 OF 6	SCALE: 1"=50'
PROJECT NO: 30803.00	DRAWN BY: DWP	

**VHB** Vanasse Hangen Brustlin, Inc.  
 Transportation Land Development Environmental Services  
 11832 Rock Landing Drive, Suite 203  
 Newport News, Virginia 23606  
 (757) 873-3366 • FAX (757) 873-0157



City of Williamsburg & County of James City  
 Circuit Court. This PLAT was recorded on  
 26 Aug 2002  
 at 10:22 AM in PLB 87 PG 42-47  
 DOCUMENT # 020019595  
 Patsy B. Woolridge, Clerk  
*Patsy B. Woolridge*

EXCLUSIVE JAMES CITY  
 SERVICE AUTHORITY VAR.  
 WIDTH UTILITY EASEMENT  
 (P.B. 73, PG. 80-82)