

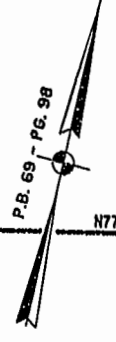
#021491

87 PAGE 31

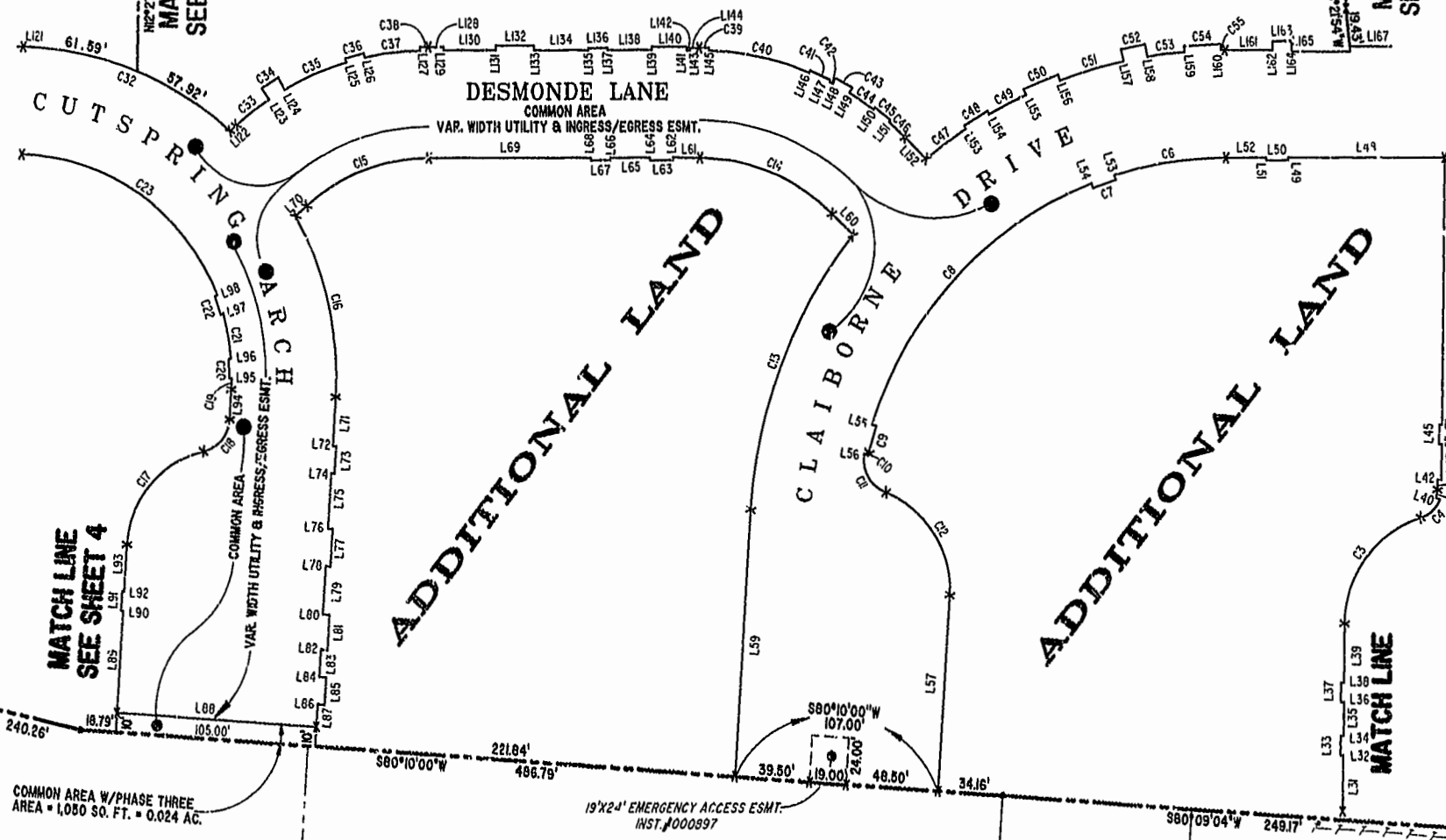
JAMES CITY COUNTY TP 33-3-01-27
NOW OR FORMERLY
ARTCRAFT - STRATFORD, L.C.
D.B. 649 P. 470

JAMES CITY COUNTY TP 33-3-01-28
NOW OR FORMERLY
GARY E. & CATHY L. NESTER
D.B. 509 P. 735

JAMES CITY COUNTY TP 33-3-01-29
NOW OR FORMERLY
GARY E. & CATHY L. NESTER
D.B. 619 P. 683



ADDITIONAL LAND



COMMON AREA W/PHASE THREE
AREA = 1,080 SQ. FT. = 0.024 AC.

TP 281-10-00-B
NOW OR FORMERLY
752 L.L.C.
INST. #980305

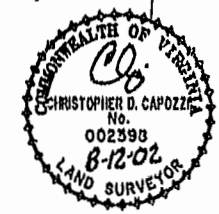
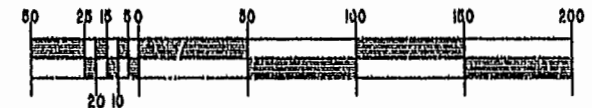
TP 282-08-00-001
NOW OR FORMERLY
752 L.L.C.
INST. #980305

TP 281-10-00-B
NOW OR FORMERLY
752 L.L.C.
INST. #980305

TP 282-08-00-001
NOW OR FORMERLY
752 L.L.C.
INST. #980305

19'x24' EMERGENCY ACCESS ESMT.
INST. #000897

GRAPHIC SCALE: 1" = 50'



City of Williamsburg County of James City
Circuit Court: This PLAT was recorded on
August 19, 2002
at 1:24 AM/PM PB87 PG 22-33
DOCUMENT # 021491
BETSY B. WOOLRIDGE, CLERK
C. Ann Hill, Dep. Clerk

EXHIBIT "A"
CLAIBORNE
(A CONDOMINIUM COMMUNITY)
PHASE THREE

CITY OF WILLIAMSBURG, VIRGINIA			
Hassell & Folkes, P.C. Engineers Surveyors Planners Chesapeake, VA 23320 (757) 547-9531	SIZE c	CONTRACT NO 114D/16	FILENAME PH-3-BLDG-16.DWG
SCALE: 1" = 50'	DATE: 08/07/02	REV.	
SHEET 3 of 8			

A-1520

A-1520