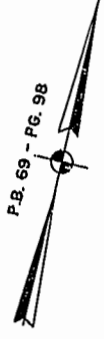


#021491

87 PAGE 30

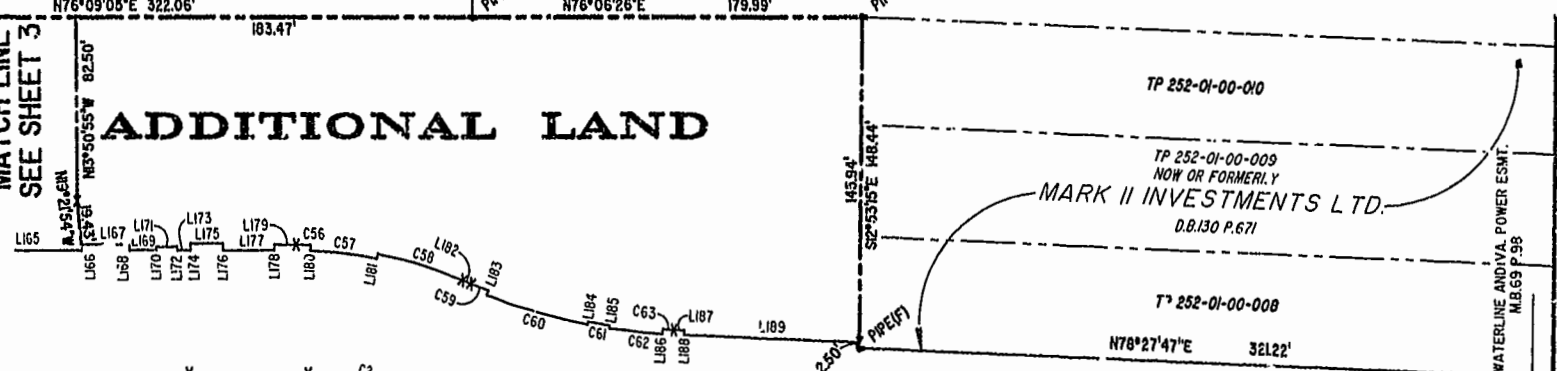
JAMES CITY COUNTY TP 33-3-01-29  
NOW OR FORMERLY  
GARY E. & CATHY L. NESTER  
D.B.619 P.603

JAMES CITY COUNTY TP 33-3-01-24  
NOW OR FORMERLY  
GOLDEN KNIGHTS, INC.  
D.B.568 P.316



MATCH LINE  
SEE SHEET 3

ADDITIONAL LAND



CLAIBORNE DRIVE  
VAR. WIDTH UTILITY & INGRESS/EGRESS ESMT.  
COMMON AREA

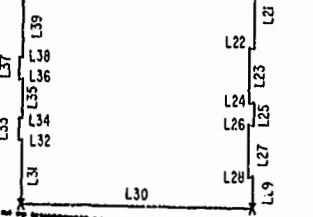
MATCH LINE  
SEE SHEET 3

SEE SHEET 3

RAVEN TERRACE  
VAR. WIDTH UTILITY & INGRESS/EGRESS ESMT.  
COMMON AREA

ADDITIONAL LAND

MATCH LINE



CHESA GCA REALTY PARTNERSHIP, L.P.  
TP 282-04-00-001  
NOW OR FORMERLY  
D.B.106 P.407

DETAIL  
N.T.S.

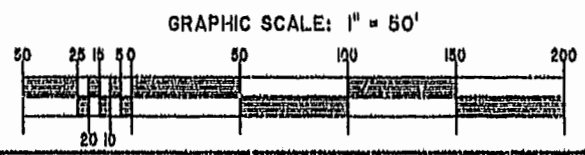
TP 282-05-00-001  
NOW OR FORMERLY  
CHELSEA GCA REALTY PARTNERSHIP, L.P.  
D.B.113 P.693

U.S. RTE. 60  
RICHMOND ROAD  
P.B. 69 - PG. 98

TP 282-08-00-001  
NOW OR FORMERLY  
752 L.L.C.  
INST. #980305

City of Williamsburg & County of James City  
Circuit Court: This PLAT was recorded on  
August 19, 2002  
at 1:24 AM PM PB 87 PG 28-33  
DOCUMENT # 021491  
BETSY B. WOOLRIDGE, CLERK  
Christopher D. Capezza Dep. Clerk

EXHIBIT "A"  
CLAIBORNE  
(A CONDOMINIUM COMMUNITY)  
PHASE THREE



Hassell & Folkes, P.C. Engineers Surveyors Planners Chesapeake, VA 23320 (757) 547-9531	SIZE C	CONTRACT NO 114D/16	DISK/BOX 114D/16	FILENAME PH-3-BLDG-16DW0	REV.
SCALE: 1" = 50'		DATE: 08/07/02		SHEET 2 of 5	

A-1520

A-1520