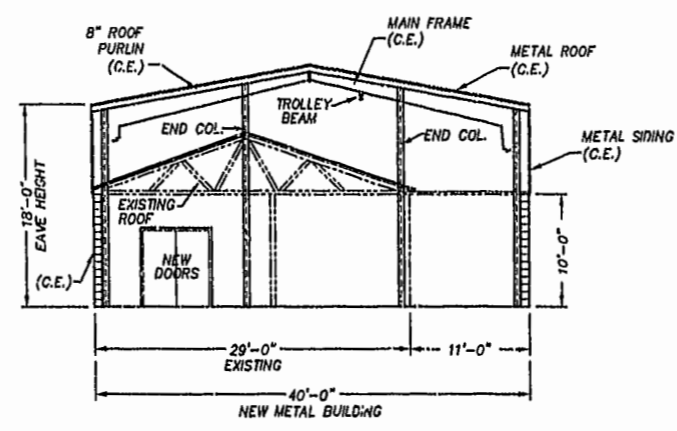
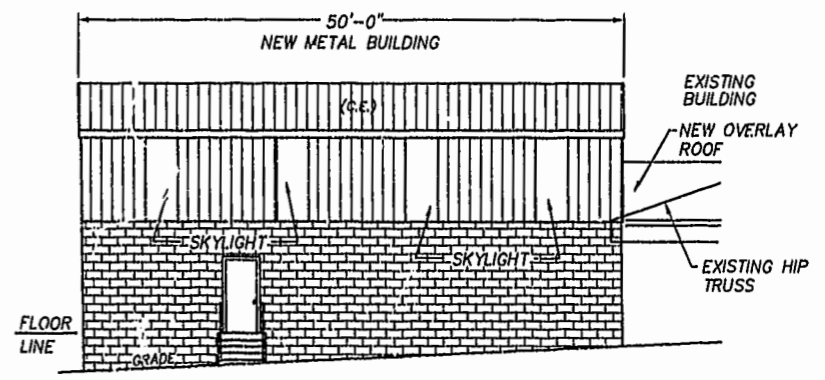


PLAN VIEW

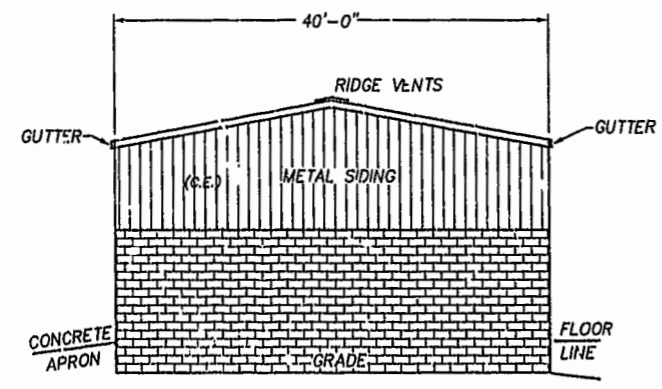


SECTION "A"- "A"

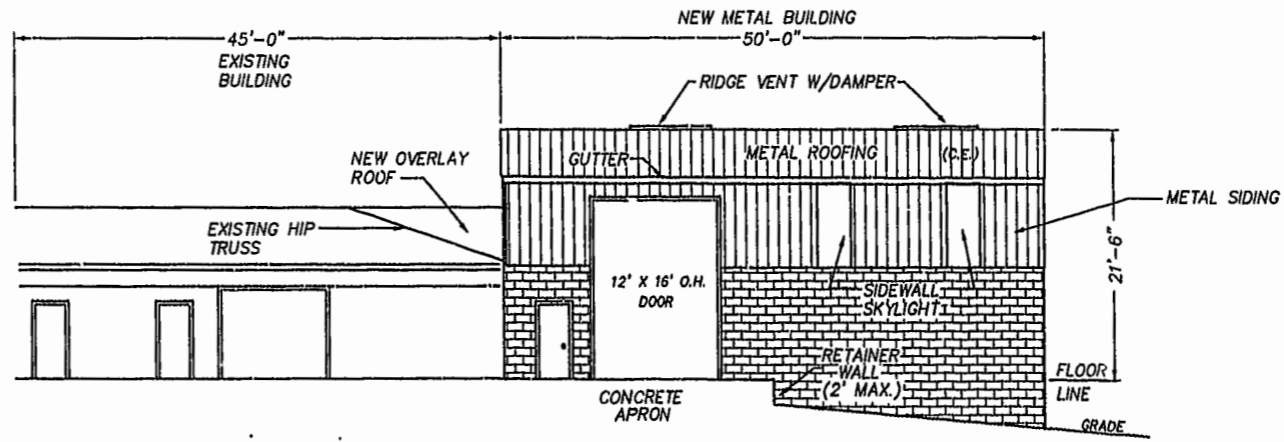
NOTE:
IN ACCORDANCE WITH THE AMENDMENT TO THE DECLARATION OF COVENANTS AND RESTRICTIONS OF BOB-CAT CONDOMINIUM MANAGEMENT CENTER, A CONDOMINIUM, " UPON COMPLETION OF THE IMPROVEMENTS IN THE ADDITION CONSTITUTING THE ADDITION TO UNIT "F", THE TERM "CEILING" FOR THE ADDITION TO UNIT "F" SHALL INCLUDE THE MAIN FRAME AND PURLINS WHICH SUPPORT THE METAL ROOF, BUT SHALL NOT INCLUDE COMPONENTS SUCH AS THE INSULATION AND TROLLEY BEAM ATTACHED TO THE CEILING, WHICH COMPONENTS ARE PART OF THE UNIT.



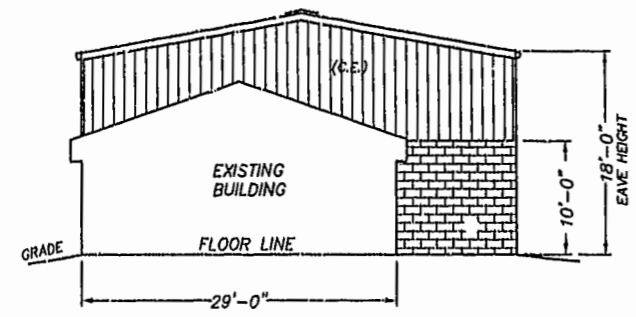
REAR ELEVATION



RIGHT SIDE ELEVATION



FRONT ELEVATION



LEFT SIDE ELEVATION

CERTIFICATION FOR PLANS

"THE UNDERSIGNED, A LICENSED LAND SURVEYOR, DOES HEREBY CERTIFY THAT THESE PLANS (AS SUBMITTED BY BOB RIPLEY CONSTRUCTION, INC.) DEPICT IMPROVEMENTS TO BE CONSTRUCTED (BUT WHICH ARE NOT YET COMPLETED) AND, IF THE IMPROVEMENTS ARE CONSTRUCTED IN ACCORDANCE WITH THESE PLANS, THESE PLANS CONFORM TO THE REQUIREMENTS OF VA. CODE ANN. SUBSECTIONS 55-79.58 A IN SO FAR AS IT RELATES TO CHARACTERISTICS OF THE CONDOMINIUM TO BE DEPICTED ON SUCH PLANS. CONSTRUCTION OF THE ADDITION TO UNIT "F" DEPICTED HEREON HAS NOT YET BEGUN.

Ronald W. Eads
RONALD W. EADS, L.S.

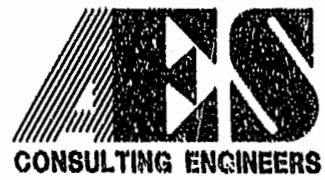
7-8-02
DATE



NOTE:
ALL BUILDING DIMENSIONS AND DETAILS SHOWN ARE PER PLANS BY BOB RIPLEY CONSTRUCTION, INC.

NOTE:
COMMON ELEMENTS ARE NOT YET COMPLETED.

07.08.02-08:35 6722F02.DWG JFS



5248 Olde Towne Road, Suite 1
Williamsburg, Virginia 23188
(757) 253-0040
Fax (757) 220-8994

EXHIBIT "B"
PLAT OF
BOB-CAT CONDOMINIUM MANAGEMENT CENTER
ADDITION TO UNIT "F"
OWNER/DEVELOPER: ROBERT F. RIPLEY & CATHERINE J. RIPLEY
BERKELEY DISTRICT JAMES CITY COUNTY VIRGINIA

City of Williamsburg & County of James City		
Circuit Court: This PLAT was recorded on		
8 August 2002		
at 11:36 AM	AM/PB. 27 PG. 25	
DOCUMENT # 020018257		
Patsy B. Woodbridge, Dep. Clerk		
No.	DATE	REVISION / COMMENT / NOTE
		BY

Designed	Drawn
RWE	JFS
Scale	Date
1"=10'	7/08/02
Project No.	
8722-1	
Drawing No.	
2 OF 2	