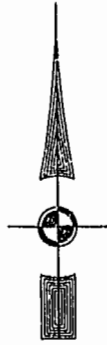


City of Williamsburg & County of James City
 Circuit Court: This PLAT was recorded on
August 7, 2002
 at 2:22 AM/PM PB 87 PG 17 of 22
 DOCUMENT # 020018083
 BETSY B. WOOLRIDGE, CLERK
C. Ann Fell, Dep. Clerk



46-1-01-0-0001
 "GREENSPRINGS PLANTATION"
 (DB 322, PG 254)

EXIST. 20' JAMES CITY COUNTY SERVICE
 AUTHORITY SAN. SEWER EASEMENT AS
 SHOWN IN AS-BUILT LOCATION. D.B. 141 - PG. 388

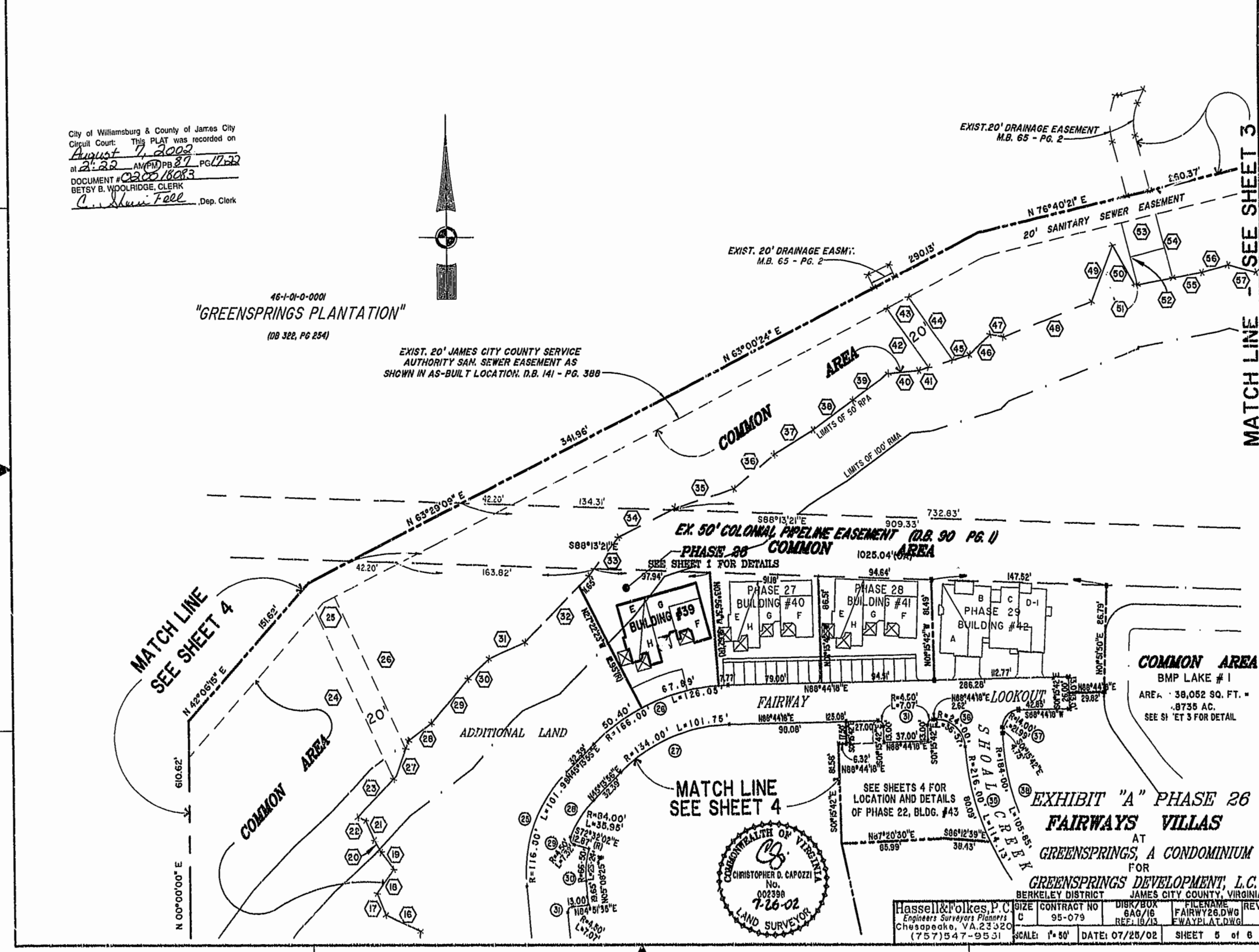
EXIST. 20' DRAINAGE EASEMENT
 M.B. 65 - PG. 2

EXIST. 20' DRAINAGE EASMT:
 M.B. 65 - PG. 2

SEE SHEET 3
 MATCH LINE

MATCH LINE
 SEE SHEET 4

MATCH LINE
 SEE SHEET 4



COMMON AREA
 BMP LAKE # 1
 AREA: 38,052 SQ. FT. =
 .8735 AC.
 SEE SHEET 3 FOR DETAIL

**EXHIBIT "A" PHASE 26
 FAIRWAYS VILLAS**
 AT
GREENSPRINGS, A CONDOMINIUM
 FOR
GREENSPRINGS DEVELOPMENT, L.C.
 BERKELEY DISTRICT JAMES CITY COUNTY, VIRGINIA



Hassell & Folkes, P.C. Engineers Surveyors Planners Chesapeake, VA 23320 (757) 547-9531	CONTRACT NO 95-079	DISK/BOX 6A9/16 REF: 18/13	FILENAME FAIRWAY26.DWG FWAYPLAT.DWG	REV.
SCALE: 1"=50'	DATE: 07/26/02	SHEET 5 of 6		