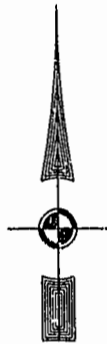


City of Williamsburg & County of James City
 Circuit Court: This PLAT was recorded on
 August 7, 2002
 at 2:12 AM/10 PG 27 PG 11-16
 DOCUMENT # 020018082
 BETSY B. WOOLRIDGE, CLERK
 C. Steve Fall, Dep. Clerk

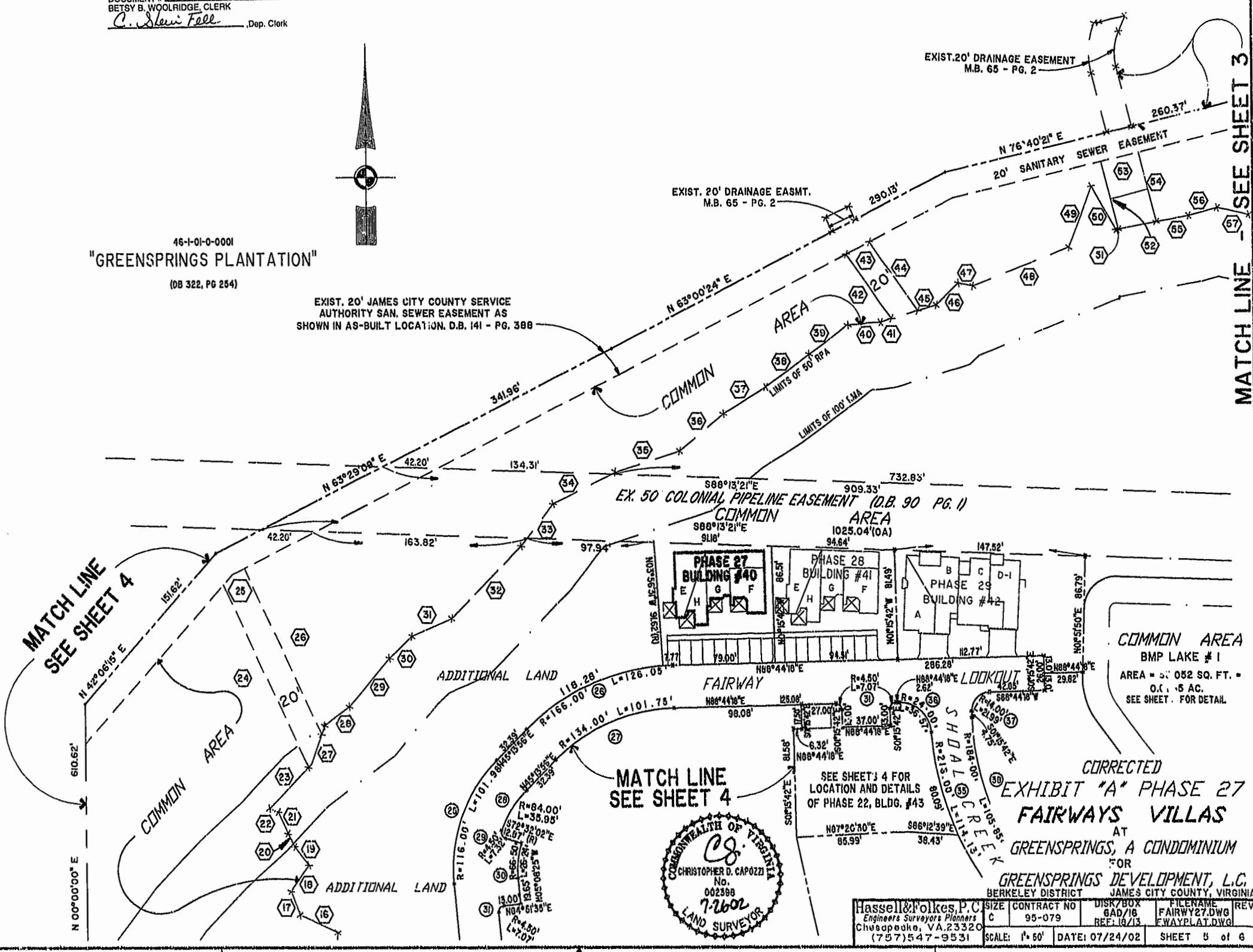


46-I-01-0-0001
 "GREENSPRINGS PLANTATION"
 (DB 322, PG 254)

EXIST. 20' JAMES CITY COUNTY SERVICE
 AUTHORITY SAN. SEWER EASEMENT AS
 SHOWN IN AS-BUILT LOCATION, D.B. 141 - PG. 388

EXIST. 20' DRAINAGE EASMT.
 M.B. 65 - PG. 2

EXIST. 20' DRAINAGE EASEMENT
 M.B. 65 - PG. 2



Hassell & Polkes, P.C. Engineers Surveyors Planners Chesapeake, VA 23320 (757) 547-9531	SIZE: C CONTRACT NO: 95-079	DISK/BOX: 6AD/18 REF: 10/13	SCALE: 1" = 60'	DATE: 07/24/02	FILENAME: FAIRWAY27.DWG FWAYPLAT.DWG	REV.:
--	--------------------------------	--------------------------------	-----------------	----------------	---	-------

MATCH LINE - SEE SHEET 3

MATCH LINE
SEE SHEET 4

MATCH LINE
SEE SHEET 4

COMMON AREA
 BMP LAKE #1
 AREA = 51,052 SQ. FT. =
 0.115 AC.
 SEE SHEET FOR DETAIL

CORRECTED
 EXHIBIT "A" PHASE 27
 FAIRWAYS VILLAS
 AT
 GREENSPRINGS, A CONDOMINIUM
 FOR
 GREENSPRINGS DEVELOPMENT, L.C.
 BERKELEY DISTRICT JAMES CITY COUNTY, VIRGINIA