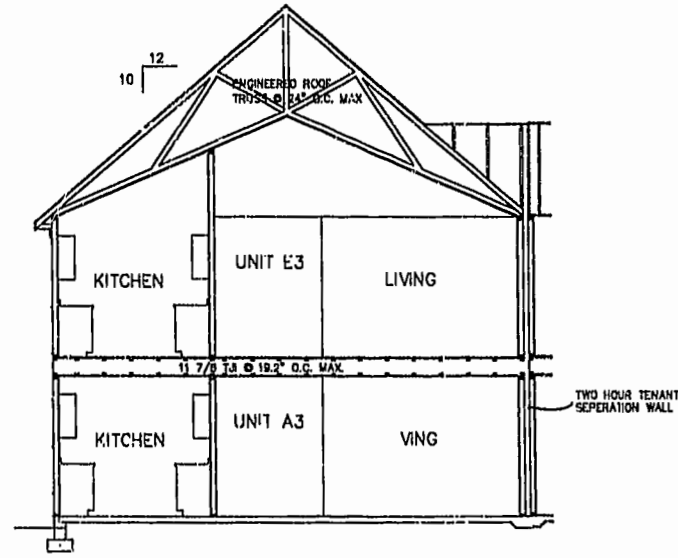
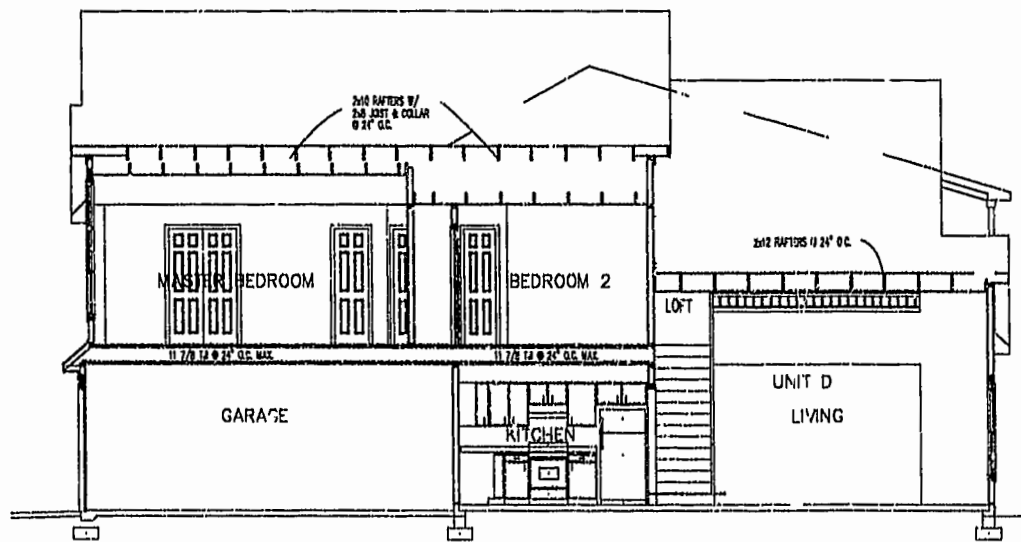


SECTION A
NOT TO SCALE



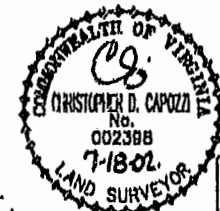
SECTION C
NOT TO SCALE



SECTION B
NOT TO SCALE

City of Williamsburg & County of James City
 Circuit Court: This PLAT was recorded on
 22 July 2002
 at 10:27 AM PM, PG 86 PG 90-101
 DOCUMENT # 021288
 BETSY B. WOOLRIDGE, CLERK
Betsy Woolridge Dep. Clerk

EXHIBIT "A"
CLAIBORNE
 (A CONDOMINIUM COMMUNITY)
PHASE TWO



NOTE: ARCHITECTURAL PLANS PREPARED BY BEN ADDERHOLDT - ARCHITECT.

Hassell & Polkes, P.C. Engineers Surveyors Planners Chesapeake, VA 23320 (757) 547-9531	SIZE: G	CONTRACT NO: 11-1/16	DISK/BOX: 11-1/16	FILENAME: PH-2-BLDG-13.DWG	REV.
SCALE: AS SHOWN	DATE: 07/18/02	SHEET 11 of 12			