

#02/285

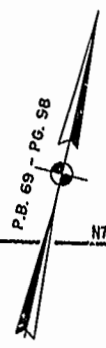
86 PAGE 82

JAMES CITY COUNTY TP 33-3-01-27  
NOW OR FORMERLY  
ARTCRAFT - STRATFORD, L.C.  
D.B. 649 P. 470

JAMES CITY COUNTY TP 33-3-01-28  
NOW OR FORMERLY  
GARY E. & CATHY L. NESTER  
D.B. 509 P. 735

JAMES CITY COUNTY TP 33-3-01-29  
NOW OR FORMERLY  
GARY E. & CATHY L. NESTER  
D.B. 619 P. 683

JAMES CITY COUNTY  
TP 33-3-01-24  
NOW OR FORMERLY  
GOLDEN KNIGHTS, INC.  
D.B. 568 P. 316

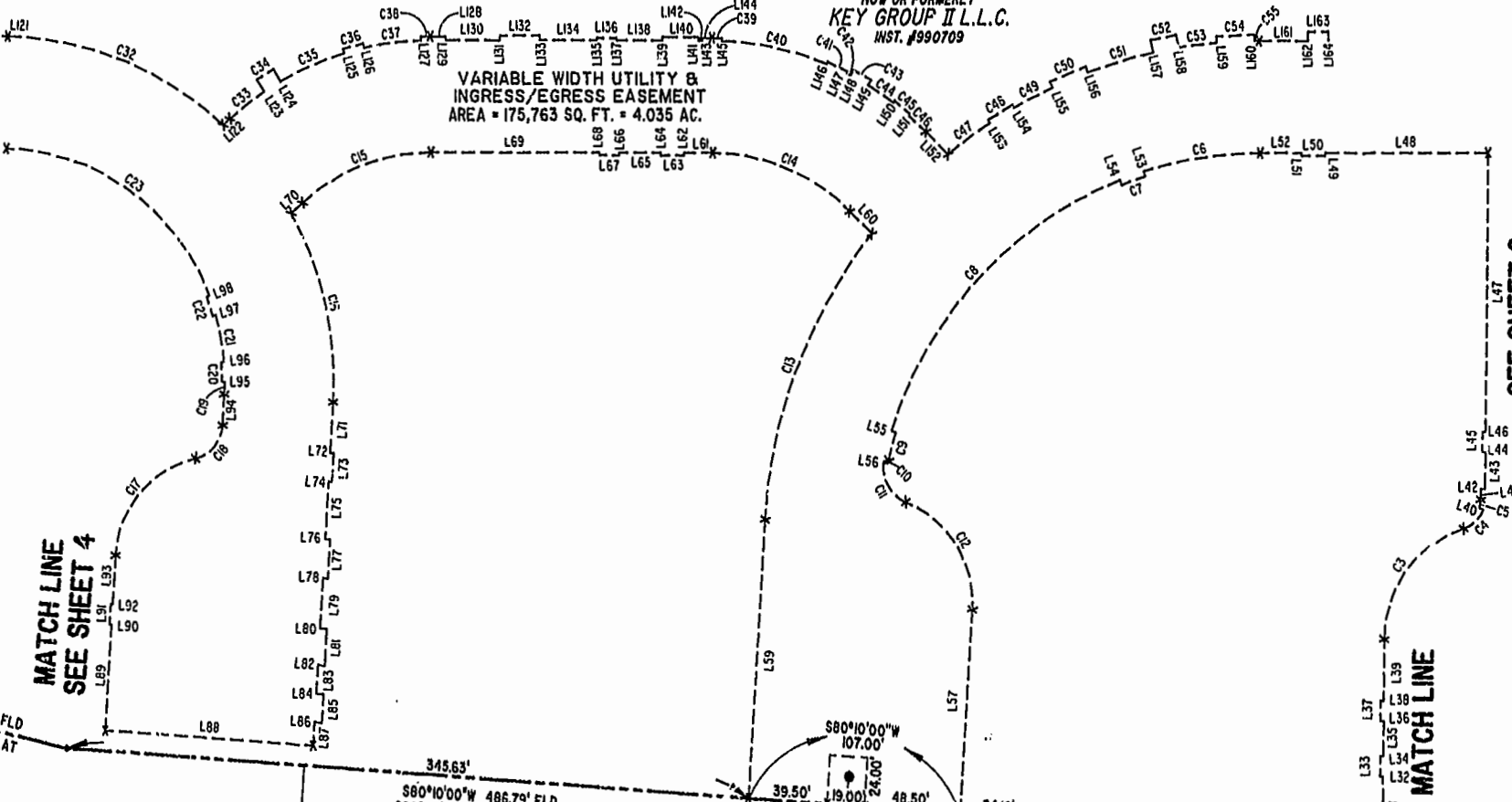


N77°32'26"E 479.30' P.P.E.F.T. N76°09'49"E 276.18' P.P.E.F.T. N76°08'06"E 199.90' P.P.E.F.T. N76°09'08"E 322.08' P.P.E.F.T. N76°06'26"E 179.99'

**LOT 6-A**  
AREA = 644,256 SQ. FT.  
= 14.790 AC.

**PART I**  
TP 281-0A-00-001  
NOW OR FORMERLY  
**KEY GROUP II L.L.C.**  
INST. #990709

**VARIABLE WIDTH UTILITY & INGRESS/EGRESS EASEMENT**  
AREA = 175,763 SQ. FT. = 4.035 AC.



MATCH LINE  
SEE SHEET 4

SEE SHEET 2

MATCH LINE

City of Williamsburg & County of James City  
Circuit Court: This PLAT was recorded on  
22 July 2002  
at 2:18 AM/PM, PB. 86 PG. 8084  
DOCUMENT # 02/285  
BETSY B. WOOLRIDGE, CLERK  
*B. Woolridge*, Dep. Clerk

S89°22'17"W 240.26' FLD  
S89°21'22"W 240.27' PLAT

345.63'  
S80°10'00"W 486.79' FLD  
S80°09'05"W 486.83' PLAT

19'x24' EMERGENCY ACCESS ESMT.  
INST. #000897

S80°10'00"W 107.00'  
S80°09'04"W 249.17' FLD  
S90°08'09"W 249.18' PLAT

S80°09'04"W 249.17' FLD  
S90°08'09"W 249.18' PLAT

S77°14'03"W 150.89' FLD  
S77°13'08"W 150.03' PLAT

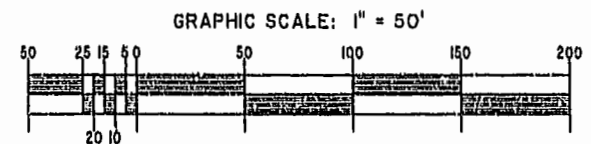
TP 281-10-00-0  
NOW OR FORMERLY  
752 L.L.C.  
INST. #980305

TP 282-08-00-001  
NOW OR FORMERLY  
752 L.L.C.  
INST. #980305

TP 281-10-00-0  
NOW OR FORMERLY  
752 L.L.C.  
INST. #980305

TP 282-08-00-001  
NOW OR FORMERLY  
752 L.L.C.  
INST. #980305

STATE OF VIRGINIA,  
CITY OF WILLIAMSBURG:  
IN THE CLERK'S OFFICE OF THE CIRCUIT COURT FOR THE CITY  
OF WILLIAMSBURG THIS 22 DAY OF July, 2002, THIS  
MAP WAS PRESENTED AND ADMITTED TO RECORD AS THE LAW DIRECTS  
PLAT BOOK 86 PAGE 80-84 @ 9:18 AM  
TESTE: *B. Woolridge* CLERK  
*B. Woolridge* CLERK



**RESUBDIVISION OF PROPERTY OF**  
**KEY GROUP II L.L.C.**  
T.P. 281-0A-00-001, T.P. 252-01-00-006,  
AND T.P. 252-01-00-007  
REF. P.B. 69 - PG. 98  
CITY OF WILLIAMSBURG, VIRGINIA

Hassell & Folkes, P.C. Engineers, Surveyors, Planners Chesapeake, VA, 23320 (757) 547-9531	SIZE C	CONTRACT NO	DISK/BOX 14/16	FILENAME CLAIBORNE-RESUB	REV.
SCALE: 1" = 50'	DATE: 02/11/02	SHEET 3 of 5			