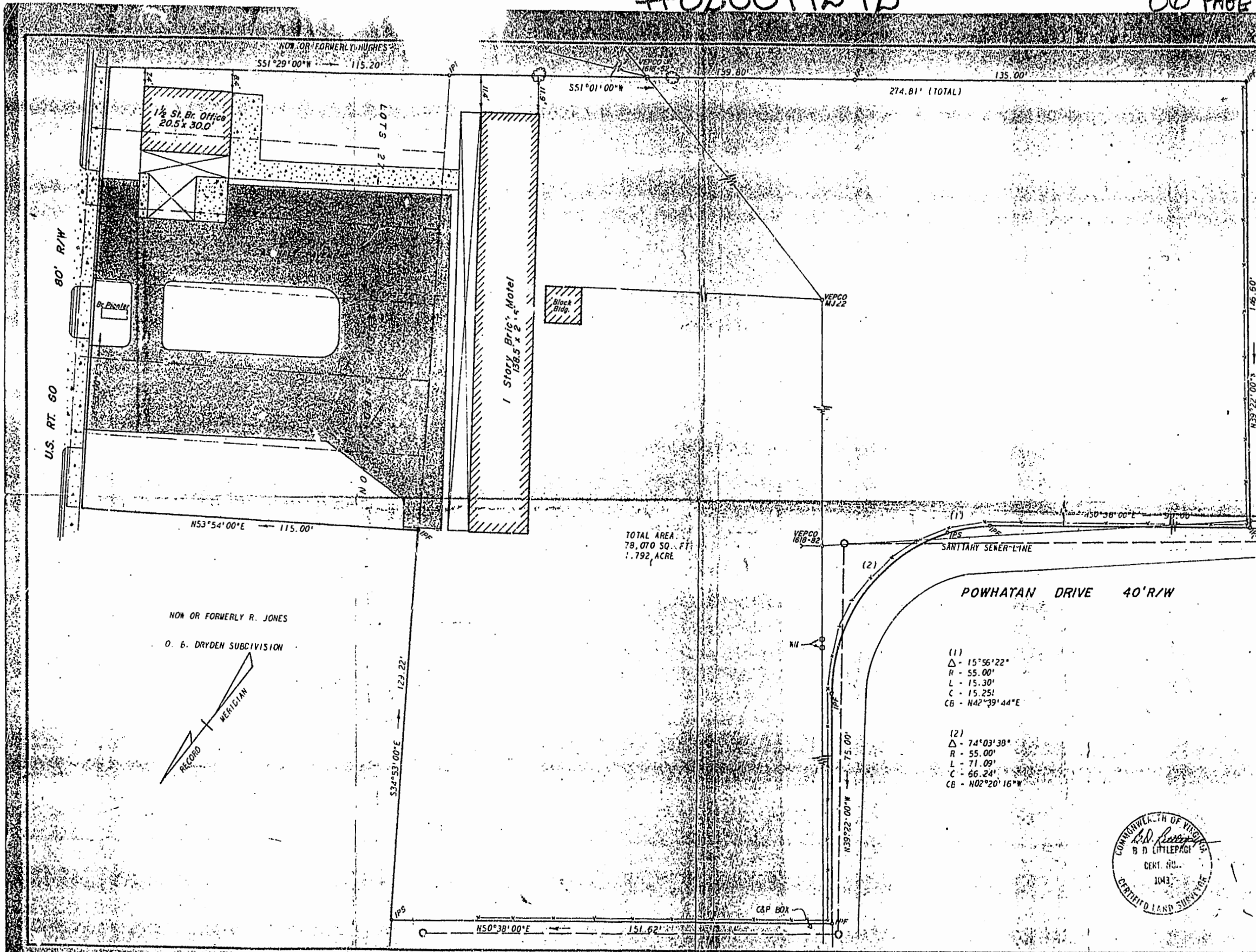


#020014242

86 PAGE 60



TOTAL AREA
78,070 SQ. FT.
1.792 ACRE

NOW OR FORMERLY R. JONES
O. B. DRYDEN SUBDIVISION

POWHATAN DRIVE 40' R/W

- (1)
- Δ - $15^{\circ}56'22''$
 - R - 55.00'
 - L - 15.30'
 - C - 15.25'
 - CB - $N42^{\circ}39'44''E$
- (2)
- Δ - $74^{\circ}03'38''$
 - R - 55.00'
 - L - 71.09'
 - C - 66.24'
 - CB - $N02^{\circ}20'16''W$



REVISION	

SURVEY FOR CONVEYANCE TO
HOAY T. TAN
POWHATAN MOTOR LODGE
 LYING IN POWHATAN DISTRICT
 JAMES CITY COUNTY, VIRGINIA

architects and engineers, inc.
 architects engineers surveyors and planners
 Williamsburg, Virginia



proj	
date	10-18-79
drawn	RCA
scale	1"=20'
sheet no.	BOL
drawn by	
check no.	3478

City of Williamsburg & County of James City
 Circuit Court: This PLAT was recorded on
 21 June 2000
 at 12:48 P.M. PG 86 PG 60
 DOCUMENT # 020014242
 BETSY B. WOOLRIDGE, CLERK
 Betsy Woolridge, Dep. Clerk