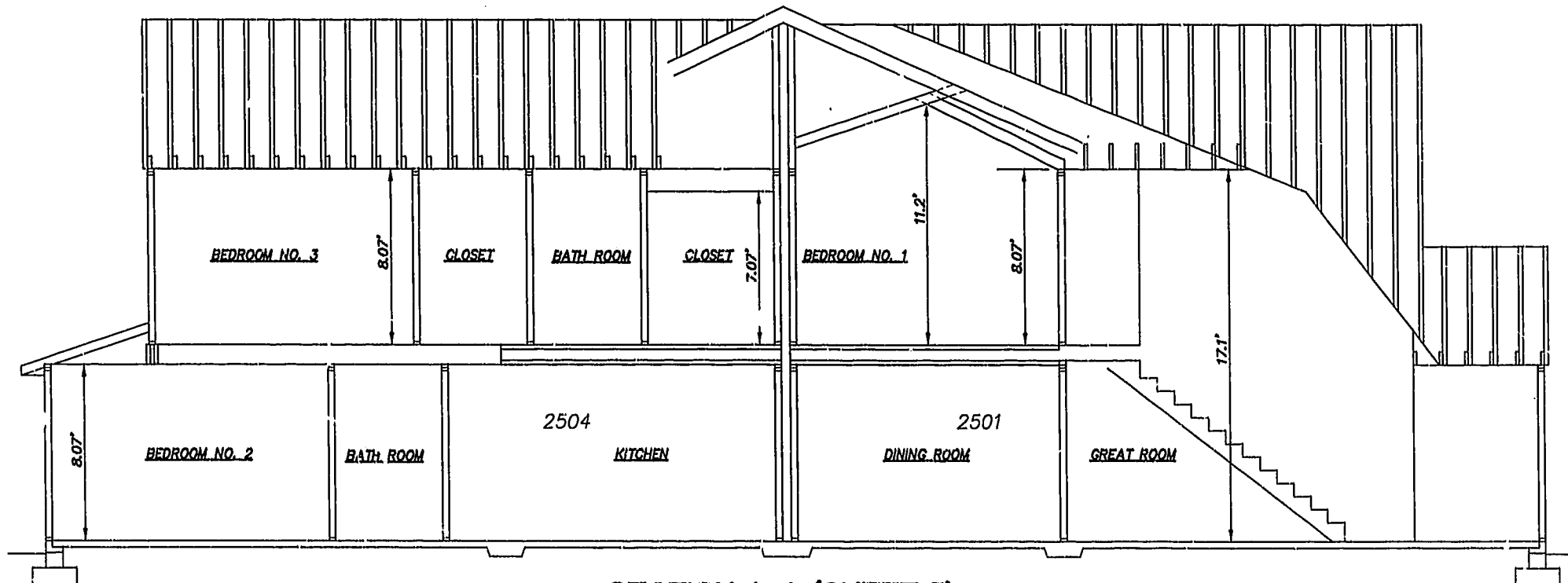


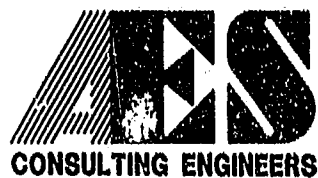
SECTION B-B (SHEET 5)



SECTION A-A (SHEET 5)

05.31.02-09:10 8395p256.dwg

JFS



5248 Olde Towne Road, Suite 1  
Williamsburg, Virginia 23188  
(757) 253-0040  
Fax (757) 220-8994

PLAT OF CONDOMINIUM  
WESTGATE AT WILLIAMSBURG,  
A CONDOMINIUM  
PHASE TWENTY-FIVE  
OWNED BY: 752 L.L.C.,  
A VIRGINIA LIMITED LIABILITY COMPANY  
CITY OF WILLIAMSBURG VIRGINIA



|     |      |  |    |
|-----|------|--|----|
| No. | DATE | REVISION / COMMENT / NOTE  | BY |
|     |      | - City of Williamsburg & County of James City<br>Circuit Court: This PLAT was recorded on<br>14 Jan 2002<br>at 2:46 AM/PM, PB 86, PG 44-46<br>DOCUMENT # 021063<br>BETSY B. WOOLRIDGE, CLERK<br>Betsy B. Woolridge, Dep. Clerk |    |

|                       |                  |
|-----------------------|------------------|
| Designed<br>GTW/ADS   | Drawn<br>AWT/JFS |
| Scale<br>1" = 4'      | Date<br>5/30/02  |
| Project No.<br>8395-6 |                  |
| Drawing No.<br>6 OF 6 |                  |