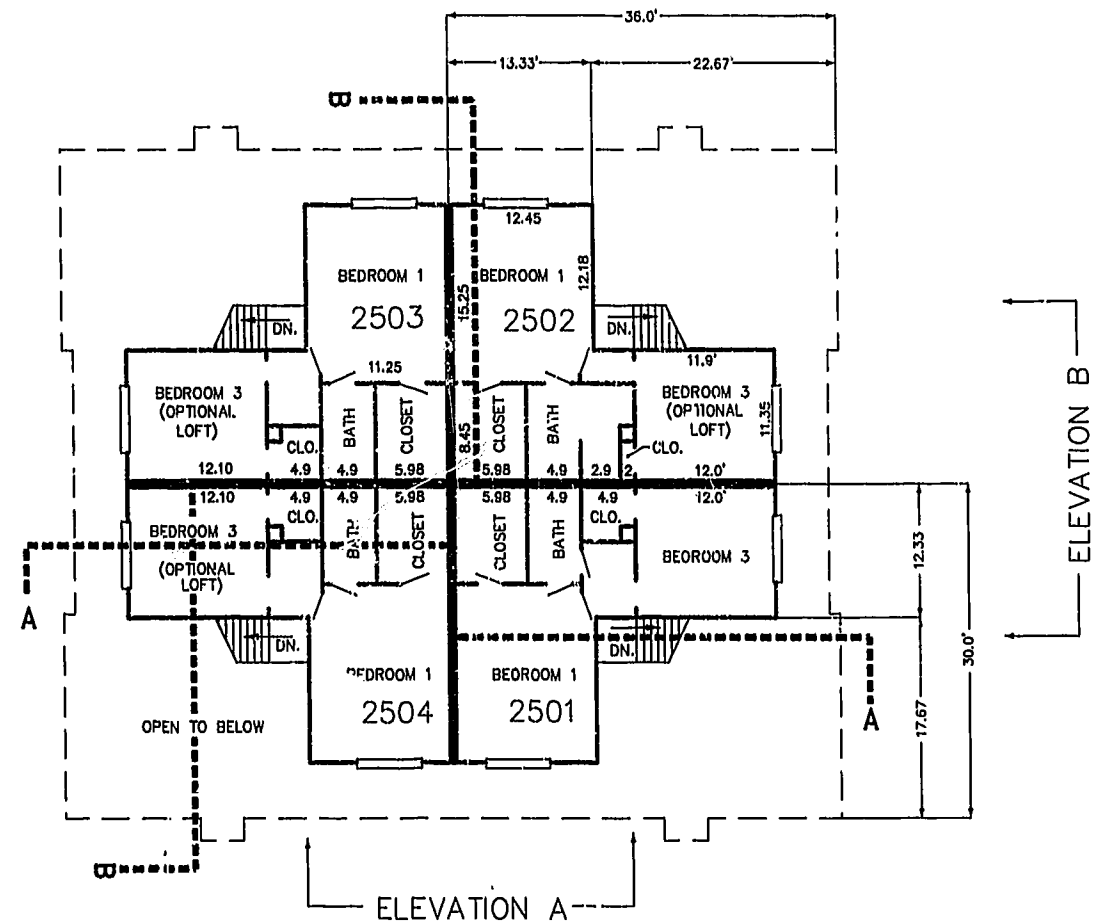


FIRST FLOOR PLAN
(UNIT #2502 IS TYPICAL)



SECOND FLOOR PLAN
(UNIT #2502 IS TYPICAL)



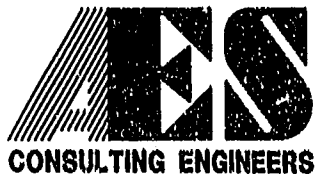
ELEVATION A



ELEVATION B

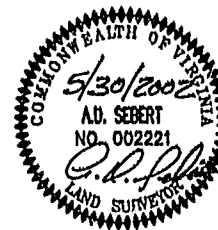
05.31.02-08:44 8395p255.dwg

JFS



5248 Olde Towne Road, Suite 1
Williamsburg, Virginia 23188
(757) 253-0040
Fax (757) 220-8994

PLAT OF CONDOMINIUM
WESTGATE AT WILLIAMSBURG,
A CONDOMINIUM
PHASE TWENTY-FIVE
OWNED BY: 752 L.L.C.,
A VIRGINIA LIMITED LIABILITY COMPANY
CITY OF WILLIAMSBURG VIRGINIA



No.	DATE	REVISION / COMMENT / NOTE	BY
		City of Williamsburg & County of James City Circuit Court: This PLAT was recorded on 14 June 2002	
		at 2:46 PM, PG. 86, PG. 41-46	
		DOCUMENT # 021063	
		BETSY B. WOOLRIDGE, CLERK	
		Betsy B. Woolridge, Reg. Clerk	

Designed GTW/ADS	Drawn JFS
Scale 1" = 10'	Date 5/30/02
Project No. 8395-6	
Drawing No. 5 OF 6	