

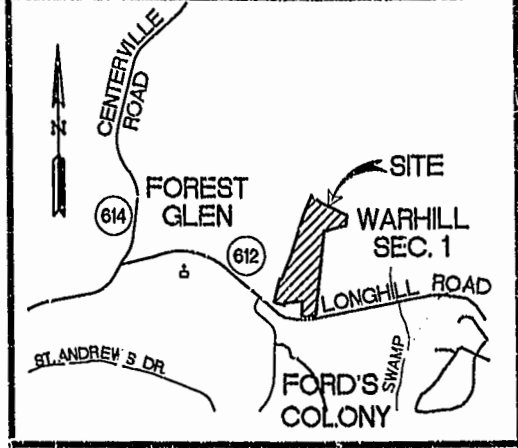
# 020013086

86 PAGE 39

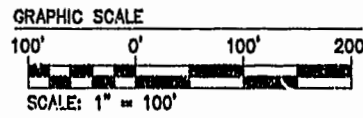
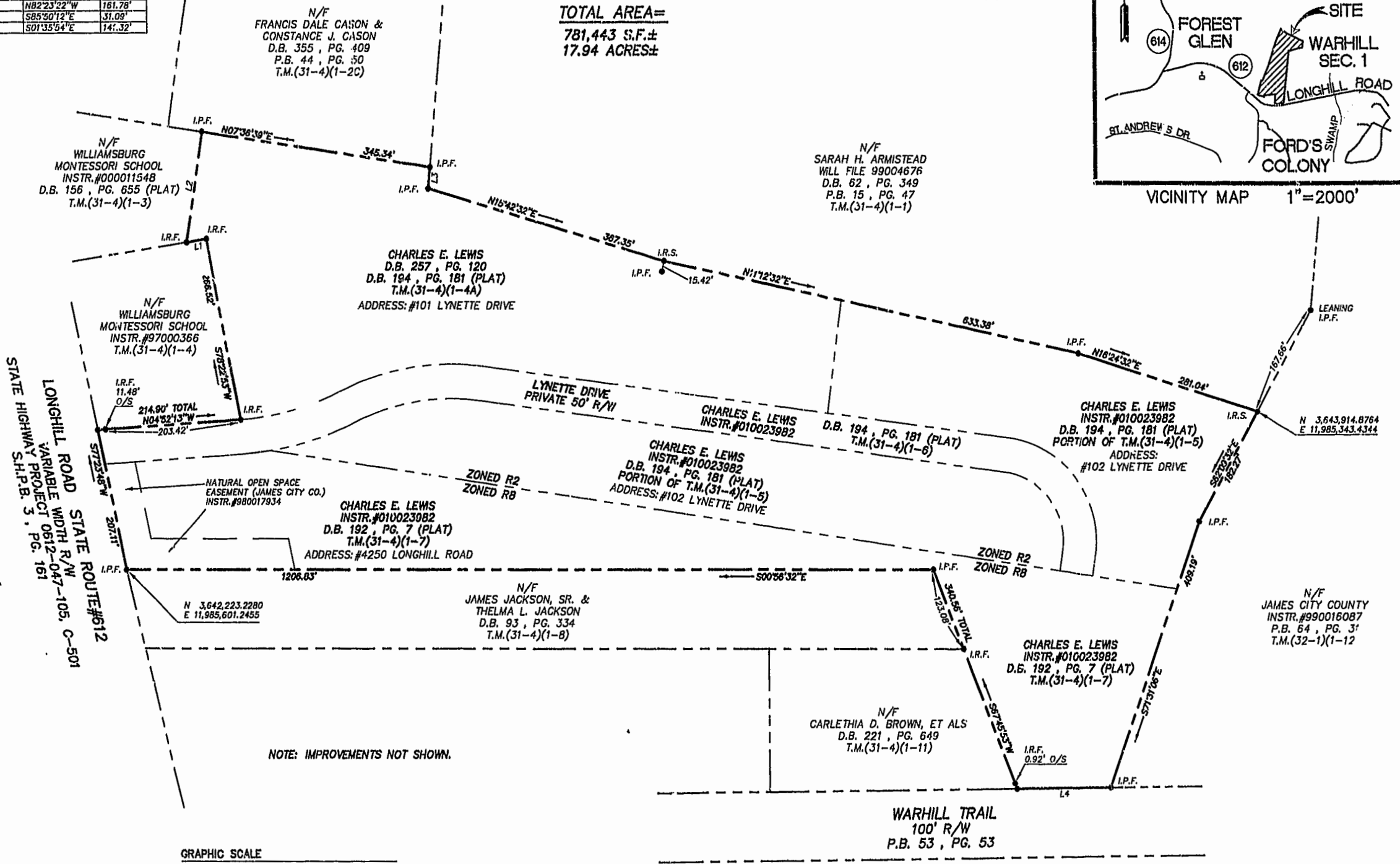
LINE TABLE

NUMBER	BEARING	DISTANCE
L1	S10°02'35"E	30.06'
L2	N82°23'22"W	161.78'
L3	S85°50'12"E	31.09'
L4	S01°35'54"W	141.32'

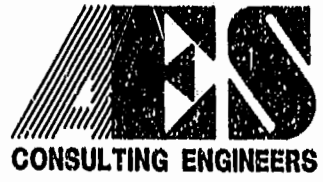
JAMES CITY COUNTY  
 GEODETIC CONTROL NETWORK  
 MONUMENT STA. 310



TOTAL AREA=  
 781,443 S.F.±  
 17.94 ACRES±



JKR 05.21.02-10.21 8358BNDY.dwg



5248 Olde Towne Road, Suite 1  
 Williamsburg, Virginia 23188  
 (757) 253-0040  
 Fax (757) 220-8994

PLAT OF SURVEY  
 ON VARIOUS PARCELS  
 CONTAINING 17.94 ACRES±  
 OWNED BY  
 CHARLES E. LEWIS

POWhatan DISTRICT    JAMES CITY COUNTY    VIRGINIA



No.	DATE	REVISION / COMMENT / NOTE	BY

City of Williamsburg & County of James City  
 Circuit Court: This PLAT was recorded on  
June 6, 2002  
 at 1:27 PM, P.B. 86, PG. 39  
 DOCUMENT # 020013086  
 BETSY B. WOOLRIDGE, CLERK  
 [Signature] Sup. Clerk

Designed 000	Drawn JKR
Scale 1"=100'	Date 5/21/2002
Project No. 8398-1	
Drawing No. 10F1	