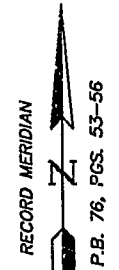


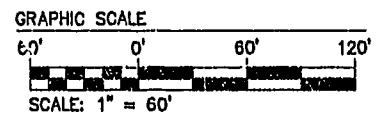
#1020012703

N/F HAMPTON ROADS DEVELOPMENT, LLC DOC. #000005190 T.M. (46-1) 1-2C

City of Williamsburg & County of James City Circuit Court: This PLAT was recorded on 31 May 2002 at 12:37 AM PM, PB 86, PG 36-38 DOCUMENT # 02 0012703 BETSY B. WOOLRIDGE, CLERK



NOTE: JAMES CITY COUNTY COORDINATES REFERENCED ON THIS SHEET ARE FOR GIS PURPOSES ONLY. ALL PROPERTY LINE INFORMATION SHOWN ON THIS PLAT IS BASED ON RECORD MERIDIAN.

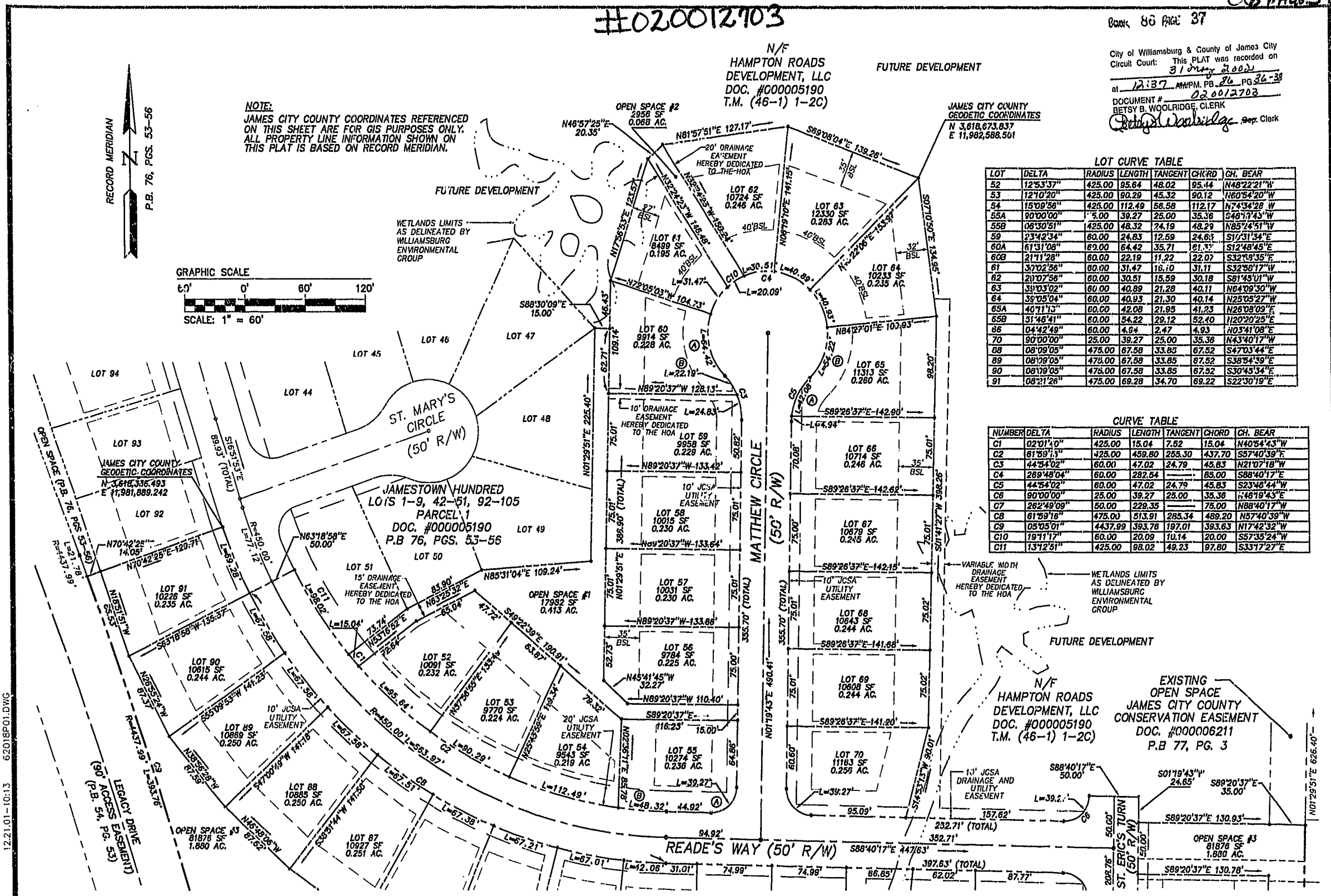


LOT CURVE TABLE

LOT	DELTA	RADIUS	LENGTH	TANGENT	CHORD	CH. BEAR
52	125°33'37"	425.00	95.64	48.02	95.44	N48°22'21"W
53	121°0'20"	425.00	80.29	45.32	90.12	N60°54'20"W
54	150°09'56"	425.00	112.49	56.58	112.17	N74°34'28"W
55A	90°00'00"	5.00	39.27	25.00	35.36	S49°17'43"W
55B	36°30'51"	425.00	48.32	24.19	48.29	N85°24'51"W
59	23°42'34"	60.00	24.83	12.59	24.61	S17°31'34"E
60A	61°31'08"	60.00	64.42	35.71	61.31	S12°48'45"E
60B	21°11'28"	60.00	22.19	11.22	22.07	S32°58'35"E
61	32°02'56"	60.00	31.47	16.10	31.11	S32°58'17"W
62	21°07'56"	60.00	30.51	15.59	30.18	S61°45'01"W
63	33°03'02"	60.00	40.89	21.28	40.11	N64°09'30"W
64	38°05'04"	60.00	40.93	21.30	40.14	N25°05'27"W
65A	40°11'15"	60.00	42.08	21.95	41.23	N26°08'09"E
65B	31°46'41"	60.00	54.22	29.12	52.40	N20°20'25"E
66	04°42'49"	60.00	4.64	2.47	4.93	N03°41'08"E
70	90°00'00"	25.00	39.27	25.00	35.36	N43°40'17"W
88	08°09'05"	475.00	67.58	33.83	67.52	S47°03'44"E
89	08°09'05"	475.00	67.58	33.85	67.52	S38°54'39"E
90	08°09'05"	475.00	67.58	33.85	67.52	S30°45'34"E
91	08°11'26"	475.00	69.28	34.70	69.22	S22°30'19"E

CURVE TABLE

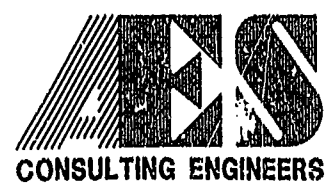
NUMBER	DELTA	RADIUS	LENGTH	TANGENT	CHORD	CH. BEAR
C1	02°01'40"	425.00	15.04	7.52	15.04	N40°54'43"W
C2	61°59'11"	425.00	459.60	265.30	437.70	S57°40'39"E
C3	44°54'02"	60.00	47.02	24.79	45.83	N21°07'18"W
C4	289°48'04"	60.00	282.54	168.00	85.00	S88°40'17"E
C5	44°54'02"	60.00	47.02	24.79	45.83	S23°48'44"W
C6	90°00'00"	25.00	39.27	25.00	35.36	N48°19'43"E
C7	282°49'09"	50.00	229.35	140.00	75.00	N88°40'17"W
C8	61°59'16"	475.00	513.91	285.34	489.20	N57°40'39"W
C9	05°05'01"	4437.99	393.78	197.01	393.63	N17°42'32"W
C10	19°11'17"	60.00	20.09	10.14	20.00	S57°35'24"W
C11	13°12'51"	425.00	98.02	49.23	97.80	S33°17'27"E



SEE SHEET 3

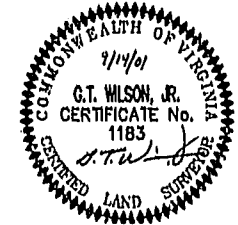
THIS SHEET ADDRESSES LOTS 52-70 AND 88-91

SEE SHEET 3



2548 Olde Towne Road, Suite 1 Williamsburg, Virginia 23188 (757) 253-0040 Fax (757) 220-8994

PLAT OF SUBDIVISION
 LOTS 52-91
 JAMESTOWN HUNDRED
 OWNED BY
 HAMPTON ROADS DEVELOPMENT, L.L.C.
 BERKELEY DISTRICT JAMES CITY COUNTY VIRGINIA



No.	DATE	REVISION / COMMENT / NOTE	BY
1	12/18/01	REVISED SETBACK LINES FOR LOTS 61 AND 64 PER OWNER AND COUNTY COMMENTS	JFS

Designed	Drawn
AES	JFS
Scale	Date
1"=60'	9/14/01
Project No.	
6201-8	
Drawing No.	
2 OF 3	