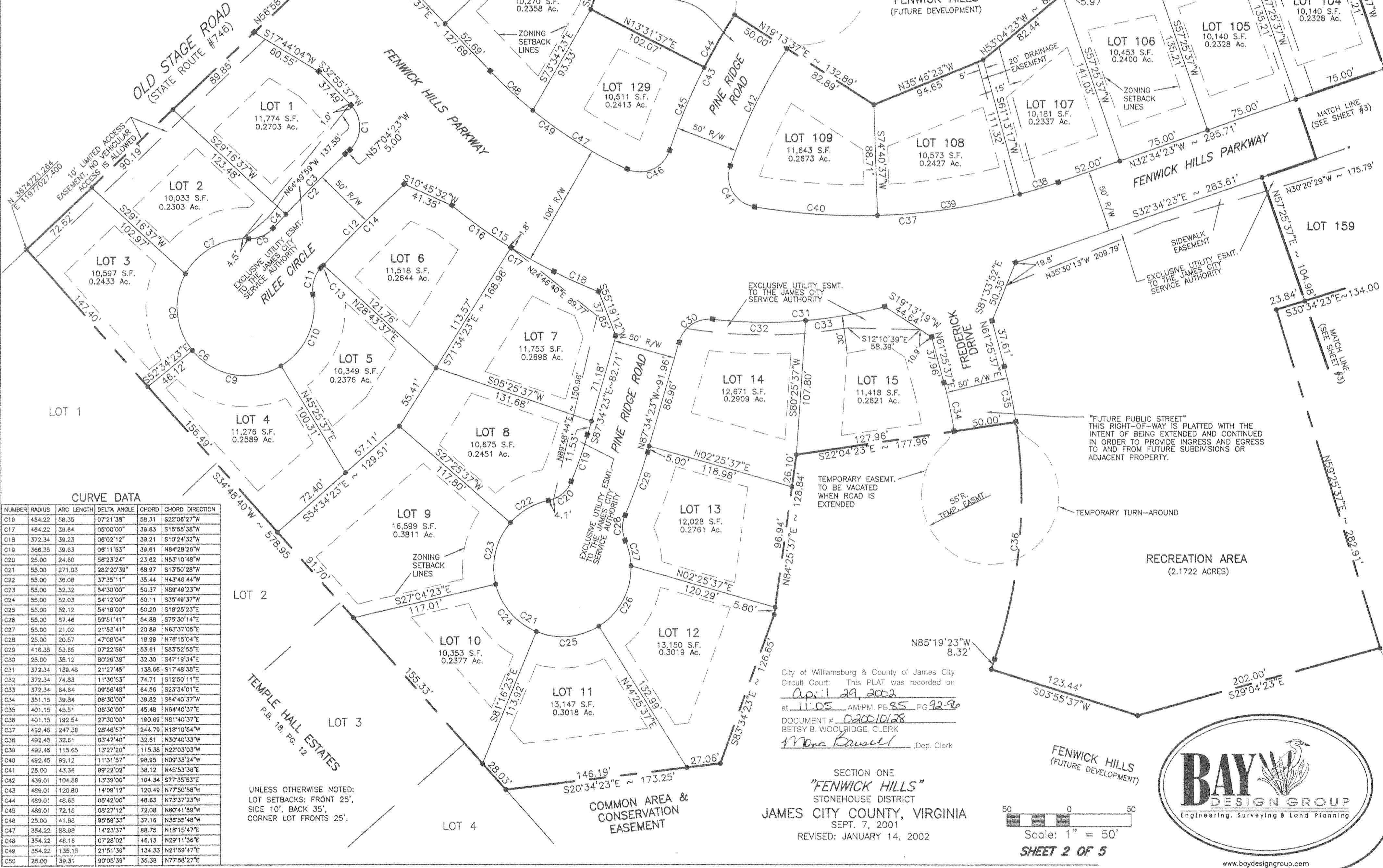


CURVE DATA

NUMBER	RADIUS	ARC LENGTH	DELTA ANGLE	CHORD	CHORD DIRECTION
C1	25.00	39.27	90°00'00"	35.36	N77°55'37"E
C2	1065.94	83.16	04°28'16"	83.16	N59°18'31"W
C3	1065.94	87.91	03°39'00"	87.89	N58°53'53"W
C4	1065.94	15.28	00°49'16"	15.28	N61°08'00"W
C5	25.00	22.01	50°27'00"	21.31	N38°19'08"W
C6	55.00	271.30	282°37'27"	88.78	S27°35'38"W
C7	55.00	61.19	63°44'57"	58.09	N42°58'07"W
C8	55.00	65.02	67°43'47"	61.30	S71°17'31"W
C9	55.00	78.71	82°00'00"	72.17	S03°34'22"E
C10	55.00	66.37	69°08'43"	62.42	S79°08'44"E
C11	25.00	22.80	52°15'40"	22.02	S87°35'15"E
C12	1015.94	95.66	05°23'41"	95.62	S58°45'35"E
C13	1015.94	3.27	00°11'03"	3.27	S81°21'55"E
C14	1015.94	92.39	05°12'38"	92.38	S58°40'03"E
C15	454.22	97.99	12°21'38"	97.80	S19°36'26"W



CURVE DATA

NUMBER	RADIUS	ARC LENGTH	DELTA ANGLE	CHORD	CHORD DIRECTION
C16	454.22	58.35	07°21'38"	58.31	S22°06'27"W
C17	454.22	39.64	05°00'00"	39.63	S15°55'38"W
C18	372.34	39.23	06°02'12"	39.21	S10°24'32"W
C19	366.35	39.63	08°11'53"	39.61	N84°28'28"W
C20	25.00	24.80	58°23'24"	23.82	N53°10'48"W
C21	55.00	271.03	282°20'39"	88.97	S13°50'28"W
C22	55.00	36.08	37°35'11"	35.44	N43°46'44"W
C23	55.00	52.32	54°30'00"	50.37	N89°49'23"W
C24	55.00	52.03	54°12'00"	50.11	S35°49'37"W
C25	55.00	52.12	54°18'00"	50.20	S18°25'23"E
C26	55.00	57.46	59°51'41"	54.88	S75°30'14"E
C27	55.00	21.02	21°53'41"	20.89	N63°37'05"E
C28	25.00	20.57	47°08'04"	19.99	N78°15'04"E
C29	416.35	53.65	07°22'56"	53.61	S83°52'55"E
C30	25.00	35.12	80°29'38"	32.30	S47°19'34"E
C31	372.34	139.48	21°27'45"	138.66	S17°48'38"E
C32	372.34	74.83	11°30'53"	74.71	S12°50'11"E
C33	372.34	64.64	09°58'48"	64.56	S23°34'01"E
C34	351.15	39.84	06°30'00"	39.82	S64°40'37"W
C35	401.15	45.51	06°30'00"	45.48	N64°40'37"E
C36	401.15	192.54	27°30'00"	190.69	N81°40'37"E
C37	492.45	247.38	28°46'57"	244.79	N18°10'54"W
C38	492.45	32.61	03°47'40"	32.61	N30°40'33"W
C39	492.45	115.65	13°27'20"	115.38	N22°03'03"W
C40	492.45	99.12	11°31'57"	98.95	N09°33'24"W
C41	25.00	43.36	99°22'02"	38.12	N45°53'36"E
C42	439.01	104.59	13°39'00"	104.34	S77°35'53"E
C43	489.01	120.80	14°09'12"	120.49	N77°50'58"W
C44	489.01	48.65	05°42'00"	48.63	N73°37'23"W
C45	489.01	72.15	08°27'12"	72.08	N87°41'59"W
C46	25.00	41.88	95°59'33"	37.16	N36°55'48"W
C47	354.22	88.98	14°23'37"	88.75	N18°15'47"E
C48	354.22	48.16	07°28'02"	46.13	N29°11'36"E
C49	354.22	135.15	21°51'39"	134.33	N21°59'47"E
C50	25.00	39.31	90°05'39"	35.38	N77°58'27"E

UNLESS OTHERWISE NOTED:  
 LOT SETBACKS: FRONT 25',  
 SIDE 10', BACK 35',  
 CORNER LOT FRONTS 25'.

City of Williamsburg & County of James City  
 Circuit Court: This PLAT was recorded on  
April 29, 2002  
 at 11:05 AM/PM. PB 85 PG 92-96  
 DOCUMENT # 020010128  
 BETSY B. WOOLRIDGE, CLERK  
*Mona Bassell* , Dep. Clerk

SECTION ONE  
 "FENWICK HILLS"  
 STONEHOUSE DISTRICT  
 JAMES CITY COUNTY, VIRGINIA  
 SEPT. 7, 2001  
 REVISED: JANUARY 14, 2002

