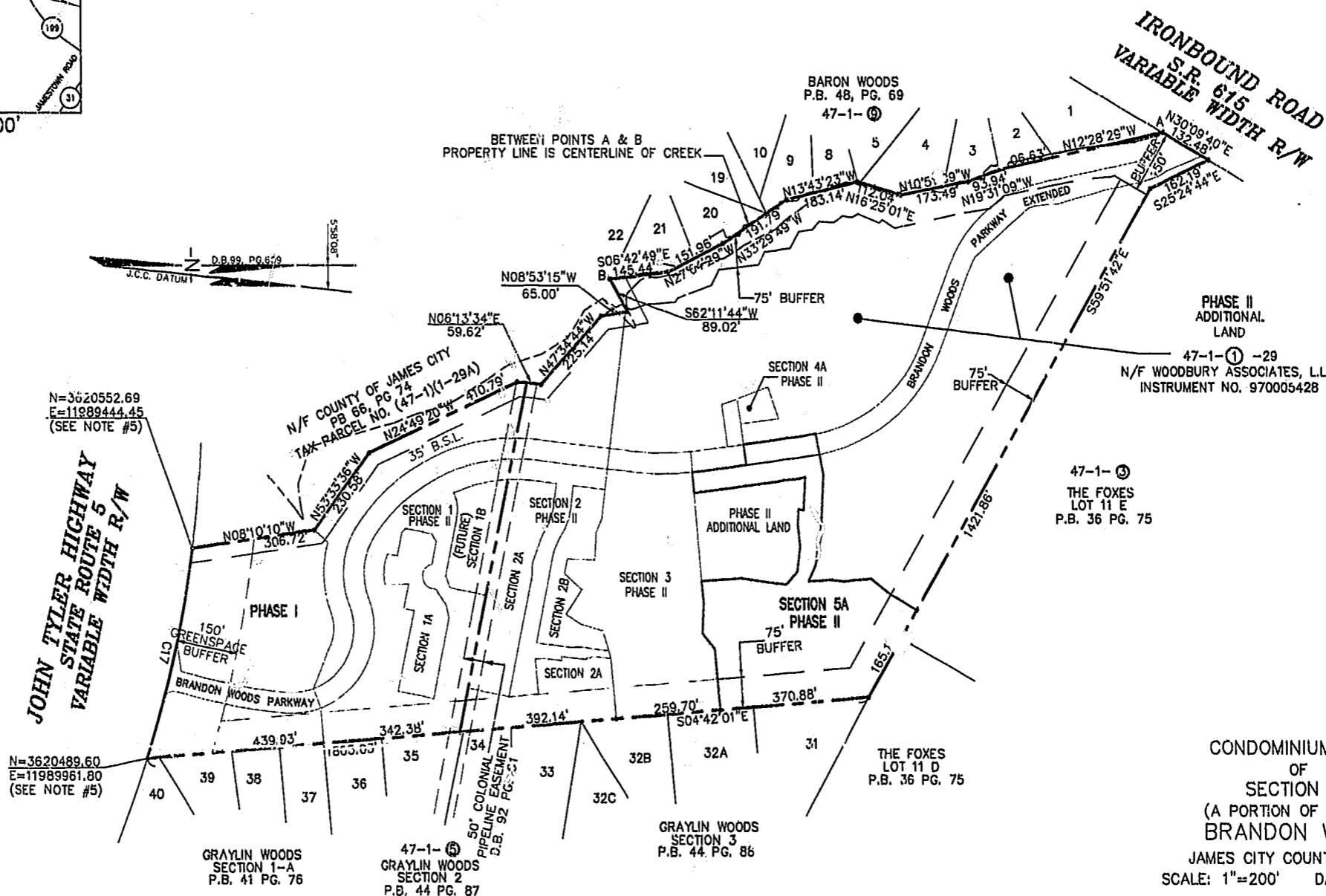


CURVE TABLE						
CURVE	LENGTH	RADIUS	TANGENT	CHORD BEARING	CHORD	DELTA
C17	521.88'	2904.79'	261.65'	N77°04'44"W	521.18'	10°17'38"



CONDOMINIUM PLAT
OF
SECTION 5A
(A PORTION OF PHASE II)
BRANDON WOODS
JAMES CITY COUNTY, VIRGINIA
SCALE: 1"=200' DATE: 4/16/02
SHEET 1 OF 4

LANDMARK DESIGN GROUP
Engineers • Planners • Surveyors
Landscape Architects • Environmental Consultants
4029 IRONBOUND ROAD SUITE 100
WILLIAMSBURG VA 23188
TEL (757) 253-2975 FAX(757) 229-0049

City of Williamsburg & County of James City
Circuit Court: This PLAT was recorded on
April 25, 2002
at 9:23 AM P.M. PG. 85
DOCUMENT # 02009913
BETSY B. WOOLRIDGE, CLERK
Mona Powell, Dep. Clerk

