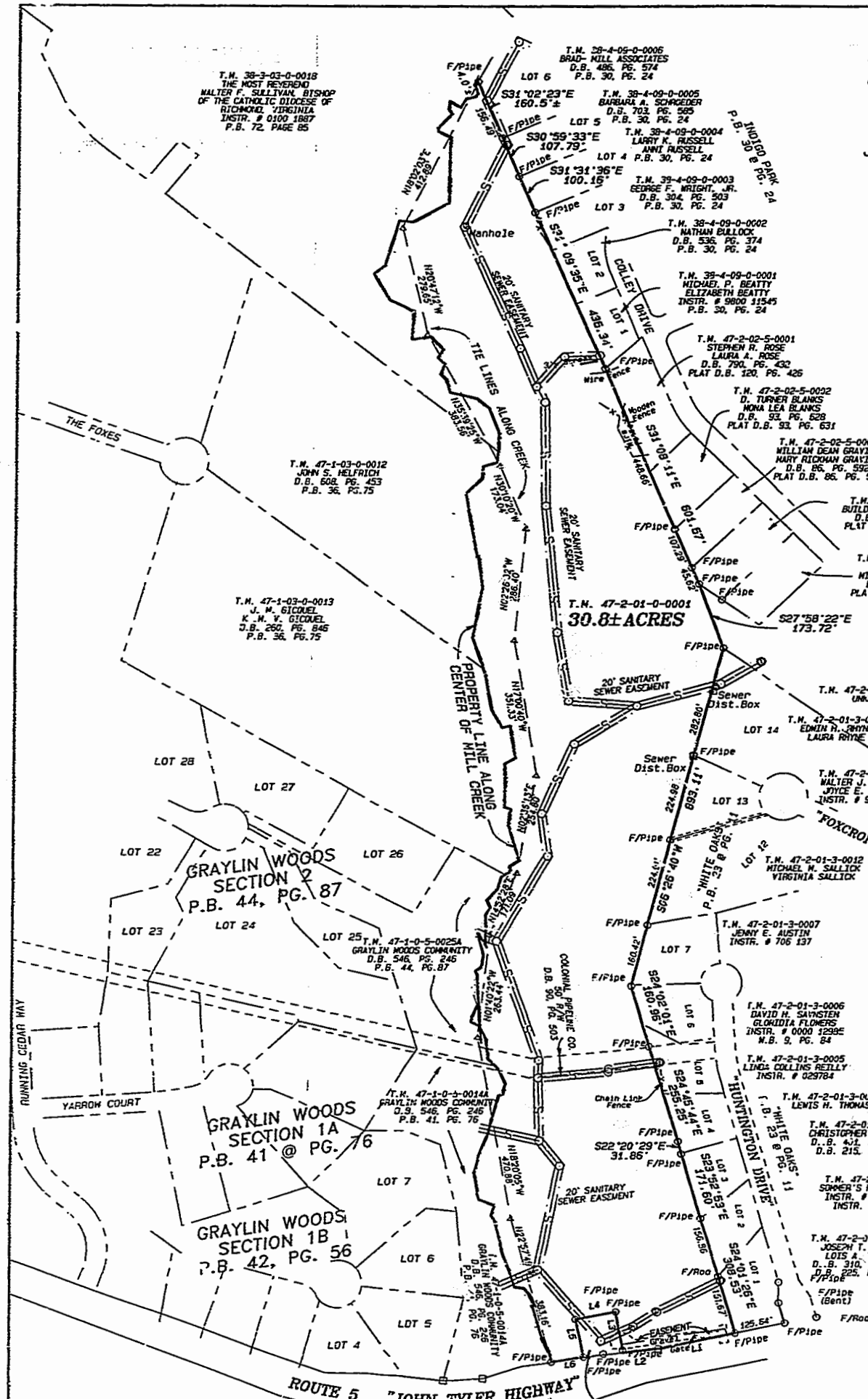


BOUNDARY SURVEY
of a portion of the Estate of
JOHN G. WARBURTON
being the tract known as
INDIGO POND
being in the
JAMESTOWN MAGISTERIAL DISTRICT
JAMES CITY COUNTY, VIRGINIA



T.M. 38-3-03-0-0018
THE MOST REVEREND
MALTER F. SULLIVAN, BISHOP
OF THE CATHOLIC DIOCESE OF
RICHMOND, VIRGINIA
INSTR. # 0100 1827
P.B. 72, PAGE 85

T.M. 28-4-05-0-0005
BRAD-MILL ASSOCIATES
D.B. 486, PG. 574
P.B. 30, PG. 24

T.M. 38-4-09-0-0005
BARBARA A. SCHWEDER
D.B. 703, PG. 565
P.B. 30, PG. 24

T.M. 38-4-09-0-0004
LARRY K. RUSSELL
ANNI RUSSELL
D.B. 304, PG. 503
P.B. 30, PG. 24

T.M. 38-4-09-0-0003
GEORGE F. WRIGHT, JR.
D.B. 304, PG. 503
P.B. 30, PG. 24

T.M. 38-4-09-0-0002
NATHAN BULLOCK
D.B. 536, PG. 374
P.B. 30, PG. 24

T.M. 38-4-09-0-0001
MICHAEL P. BEATTY
ELIZABETH BEATTY
INSTR. # 9800 11545
P.B. 30, PG. 24

T.M. 47-2-02-5-0001
STEPHEN R. ROSE
LAURA A. ROSE
D.B. 700, PG. 432
PLAT D.B. 120, PG. 426

T.M. 47-2-02-5-0002
D. TURNER BLANKS
MONA LEA BLANKS
D.B. 50, PG. 628
PLAT D.B. 93, PG. 631

T.M. 47-2-02-5-0003
WILLIAM DEAN GRAYITT
MARY RICKMAN GRAYITT
D.B. 26, PG. 592
PLAT D.B. 86, PG. 592

T.M. 47-2-02-5-0004
BUILDING SERVICE, INC.
D.B. 87, PG. 294
PLAT D.B. 87, PG. 297

T.M. 47-2-02-5-0005
JAMES B. BOWRY
MILLICENT D. BOWRY
D.B. 84, PG. 521
PLAT D.B. 84, PG. 524

T.M. 47-1-03-0-0012
JOHN S. HELFRICH
D.B. 608, PG. 453
P.B. 36, PG. 75

T.M. 47-1-03-0-0013
J. M. GICQUEL
K. M. V. GICQUEL
D.B. 260, PG. 846
P.B. 36, PG. 75

T.M. 47-2-01-0-0001
30.8± ACRES

T.M. 47-2-00-0-0008
UNKNOWN

T.M. 47-2-01-3-0014
EDWIN H. RHYME
LAURA RHYME

T.M. 47-2-01-3-0013
WALTER J. BOSHOEK
JOYCE E. BOSHOEK
INSTR. # 97000 7270

T.M. 47-2-01-3-0012
MICHAEL M. SALLICK
VIRGINIA SALLICK

T.M. 47-2-01-3-0007
JENNY E. AUSTIN
INSTR. # 706 137

T.M. 47-2-01-3-0006
DAVID H. SAVASTEN
GLOKIDIA FLOWERS
INSTR. # 0000 1299E
N.B. 9, PG. 84

T.M. 47-2-01-3-0005
LINDA COLLINS REILLY
INSTR. # 029784

T.M. 47-2-01-3-0004
LEWIS H. THOMAS

T.M. 47-2-01-3-0005
CHRISTOPHER HOSMAN
D.B. 431, PG. 260
D.B. 215, PG. 51

T.M. 47-2-01-3-0002
SOMMER'S FAMILY TRUST
INSTR. # 010006249
INSTR. # 7340134

T.M. 47-2-01-3-0001
JOSEPH T. WEEKS
LOIS A. WEEKS
D.B. 310, PG. 151
P.B. 225, PG. 300

T.M. 47-2-01-0-0001B
JAMES CITY SERVICE
D.B. 205, PG. 655
D.B. 162, PG. 294

THIS SURVEY REPRESENTS THE PORTION OF
JOHN G. WARBURTON ESTATE KNOWN AS
"INDIGO POND".
REFERENCES:
D.B. 20, PG. 267
D.B. 22, PG. 239
P.B. 3, PG. 34

SANITARY SEWER EASEMENT SHOWN HEREON
TAKEN FROM RECORD DEEDS AND PLATS AND
FROM INFORMATION PROVIDED BY JAMES CITY COUNTY.

City of Williamsburg & County of James City
Circuit Court: This PLAT was recorded on
5 February, 2002
at 2:36 P.M. P.B. 115 PG. 14
DOCUMENT # 020003469
BETSY B. WOOLRIDGE, CLERK
Betsy Woolridge, Sup. Clerk

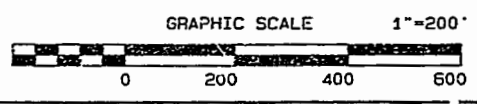
ALL LINES BY DEED DESCRIPTIONS, ADJOINING PLATS
AND FOUND PHYSICAL EVIDENCE AS NEAR AS POSSIBLE.



Dillard & Marion, P.C.
Land Surveyors
221 Queen Street, P.O. Box 1828
Tappahannock, Va. 22560
(804)443-3080, FAX(804)443-4550

DATE: JAN. 10, 2002	DISK: DGM # 453M	F.B.	J.N.
SCALE: 1" = 200'			JCP 5
DRAWN BY: V.M.H.	REVISIONS		
CHECKED BY:	47-2-01-0-0001		
SECT. NO.:	0001		

LINE	BEARING	DISTANCE
L1	S70°18'20"W	186.89'
L2	S76°00'57"W	92.29'
L3	N19°01'24"W	106.34'
L4	S70°58'36"W	100.66'
L5	S19°17'53"E	97.10'
L6	S73°05'41"W	79.71'



020003469

85 PAGE 14

I certify that this perimeter survey is correct to the best of my knowledge and belief, subject to easements, servitudes, and covenants of record.