

#020002730

85 PAGE 2

PLAT OF SUBDIVISION  
**WATERFORD**  
 AT  
**POWHATAN SECONDARY**  
 PHASE TWENTY-EIGHT  
 BERKELEY DISTRICT  
 JAMES CITY COUNTY, VIRGINIA

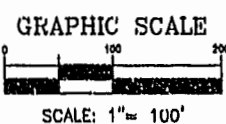
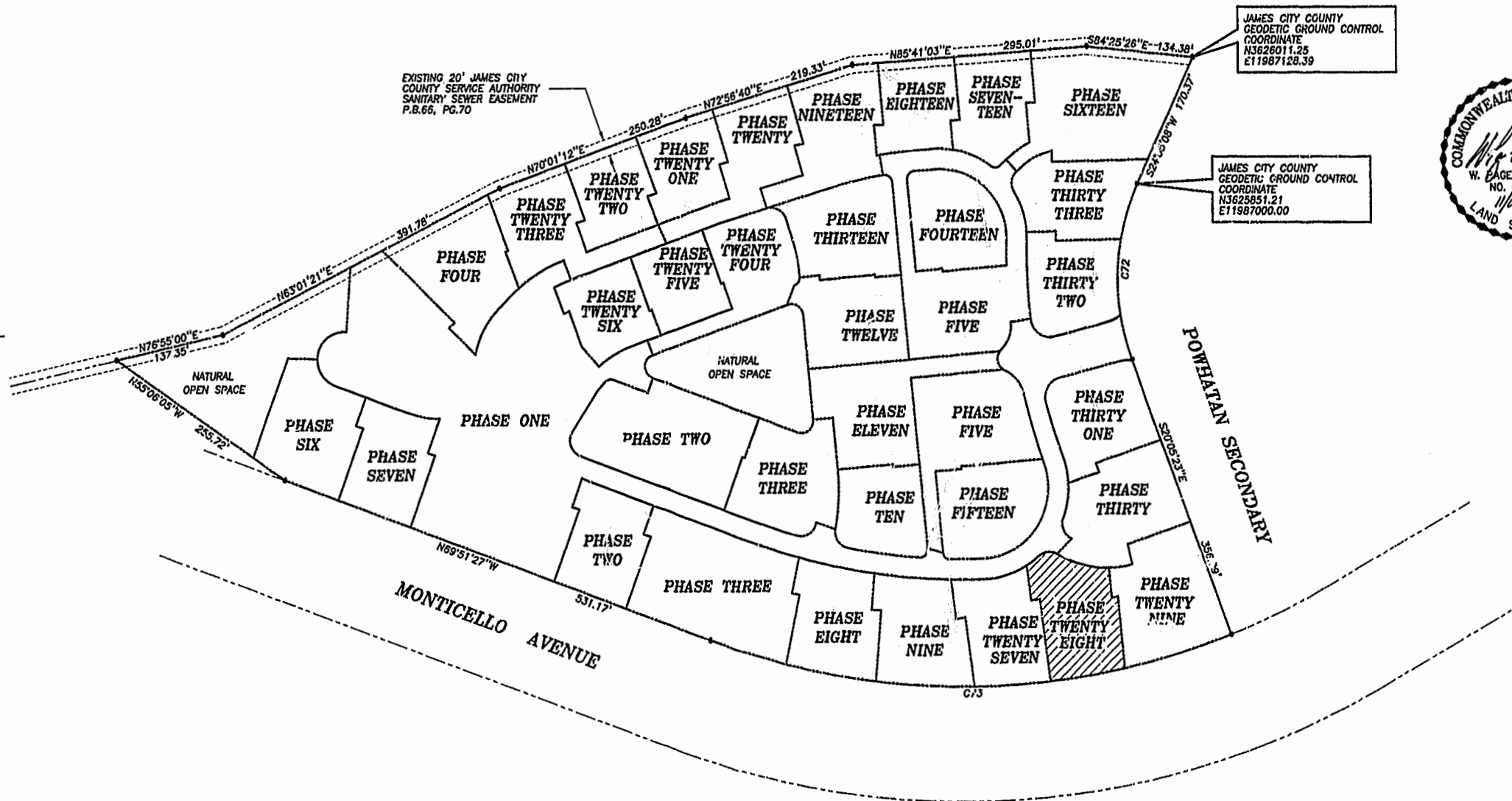
DATE: 10/21/98 SHEET 2 OF 3 SCALE: 1"=100'  
 PROJECT NO: 97-008 DRAWN BY: SJB



**SLEDD & ASSOCIATES, P.C.**  
 ENGINEERS PLANNERS SURVEYORS  
 11832 ROCK LANDING DRIVE, SUITE 203  
 NEWPORT NEWS, VIRGINIA 23606  
 (773) 873-3386

00°32'24"  
 JAMES CITY COUNTY  
 PLAT BOOK 85, PAGE 70

NOW OR FORMERLY  
 POWHATAN ENTERPRISES, INC.



**CURVE DATA**

NUMBER	DELTA	RADIUS	LENGTH	TANGENT	CHORD	CHORD BEARING
C72	45°00'31"	280.00'	219.95'	116.00'	214.34'	S02°24'52"W
C73	41°26'14"	924.91'	668.91'	349.84'	654.43'	S89°25'26"W

City of Williamsburg & County of James City  
 Circuit Court: This PLAT was recorded on

29 Jan 2002  
 at 1:26 PM, PB 85, PG 1-3

DOCUMENT # 020002730  
 GETSY B. WOOLRIDGE, CLERK

*Getsy Woolridge* Dep. Clerk

PLAT BOOK 85, PAGE 1-3

REVISED: 01/15/02  
 WATERFORD PH.28 97-008