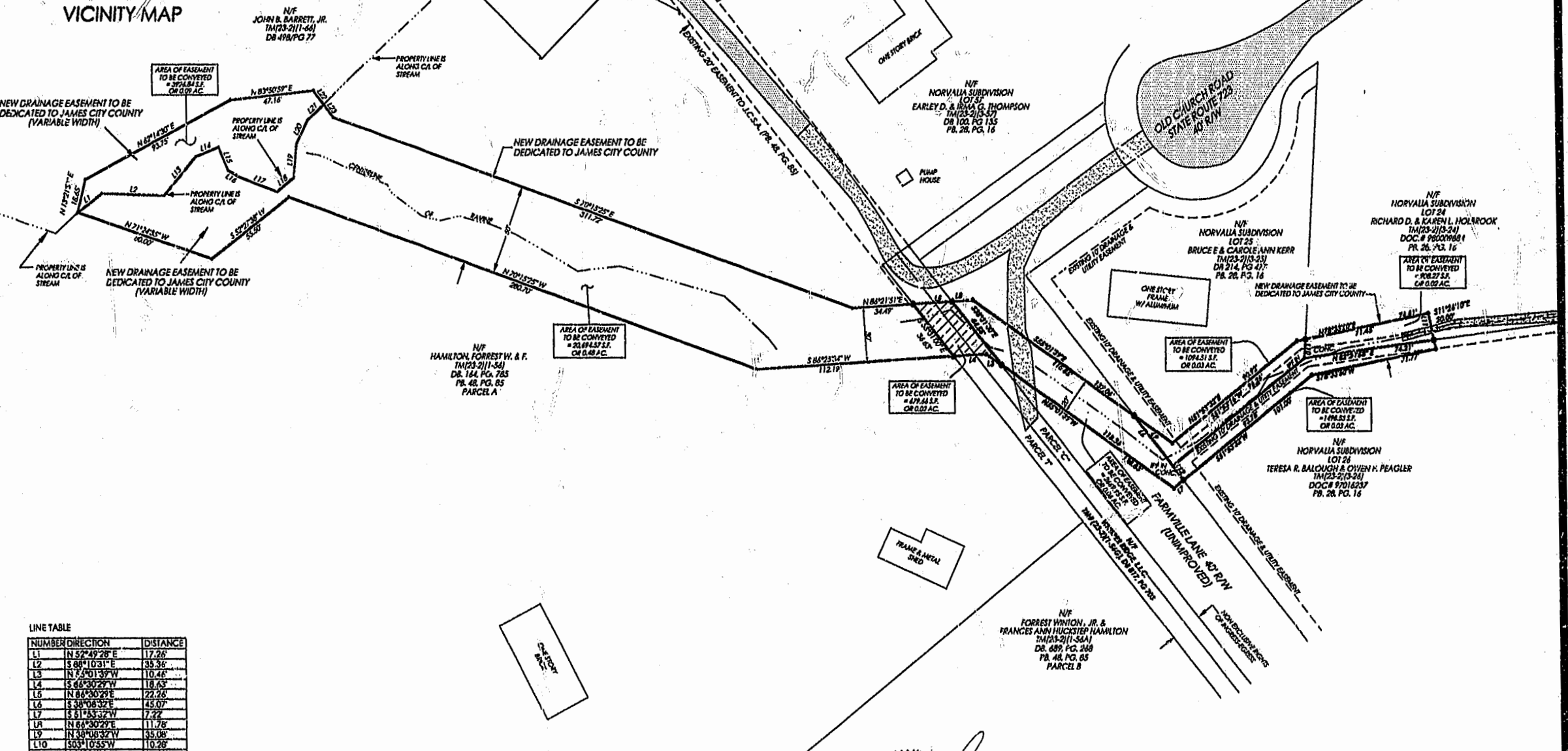
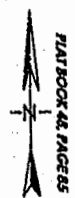
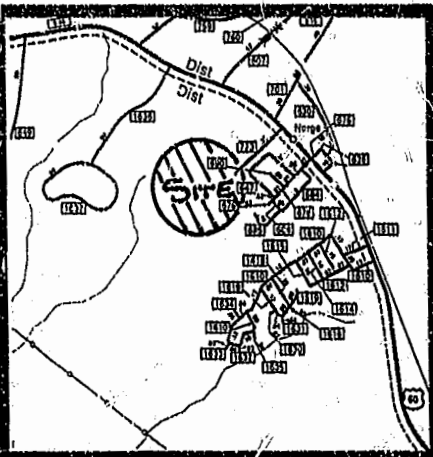


EASEMENT PLAT
TO BE CONVEYED TO
JAMES CITY COUNTY
BEING

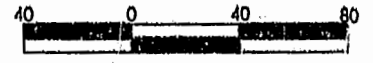
VARIABLE WIDTH DRAINAGE EASEMENT
LOCATED: POWHATAN MAGISTERIAL DISTRICT,
JAMES CITY COUNTY, VIRGINIA
DATE: APRIL 11, 2001 SCALE: 1" = 40'
MITCHELL-WILSON ASSOCIATES, P.C.
CIVIL ENGINEERS & LAND SURVEYORS
720 MAIN STREET, SUITE 112
P.O. BOX 1269
WEST POINT, VIRGINIA 23181
(804) 843-9744



LINE TABLE

NUMBER	DIRECTION	DISTANCE
L1	N 52° 49' 28" E	17.26
L2	S 68° 10' 31" E	35.36
L3	N 5° 50' 13" W	10.46
L4	S 65° 30' 29" W	18.63
L5	N 86° 30' 29" E	22.20
L6	S 38° 08' 32" E	45.07
L7	S 61° 53' 32" W	7.22
L8	N 66° 30' 29" E	11.78
L9	N 38° 08' 32" W	35.08
L10	S 03° 10' 55" W	10.28
L11	S 11° 26' 10" E	14.93
L12	N 38° 08' 32" W	10.00
L13	N 40° 09' 10" E	28.08
L14	N 60° 43' 02" E	14.02
L15	S 21° 58' 41" E	13.83
L16	S 69° 20' 59" E	6.88
L17	S 69° 20' 51" E	12.38
L18	S 61° 53' 10" E	12.38
L19	N 05° 22' 38" E	18.87
L20	N 25° 48' 40" E	14.67
L21	N 47° 16' 02" E	12.48
L22	S 37° 32' 10" E	9.44
L23	S 37° 32' 22" E	8.77

City of Williamsburg & County of James City
Circuit Court: This PLAT was recorded on
17 Jan 2002
at 3:54 AM/PM, P.B. 84, P.G. 93
DOCUMENT # 130001774
BETSY B. WOOLRIDGE, CLERK
Betsy Woolridge, Dep. Clerk



SCALE: 1" = 40'