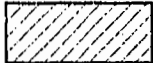



AREA TABULATION

FORMER LOT 224	16,852 S.F.	0.384 AC.
NEW LOT 224	15,512 S.F.	0.356 AC.
FORMER LOT 225	15,294 S.F.	0.351 AC.
NEW LOT 225	12,369 S.F.	0.283 AC.
FORMER LOT 226	16,907 S.F.	0.388 AC.
NEW LOT 226	15,444 S.F.	0.354 AC.
FORMER LOT 229	14,109 S.F.	0.324 AC.
NEW LOT 229	11,452 S.F.	0.262 AC.

 DENOTES AREA HEREBY CONVEYED TO THE TRADITION GOLF CLUB AT STONEHOUSE LLC

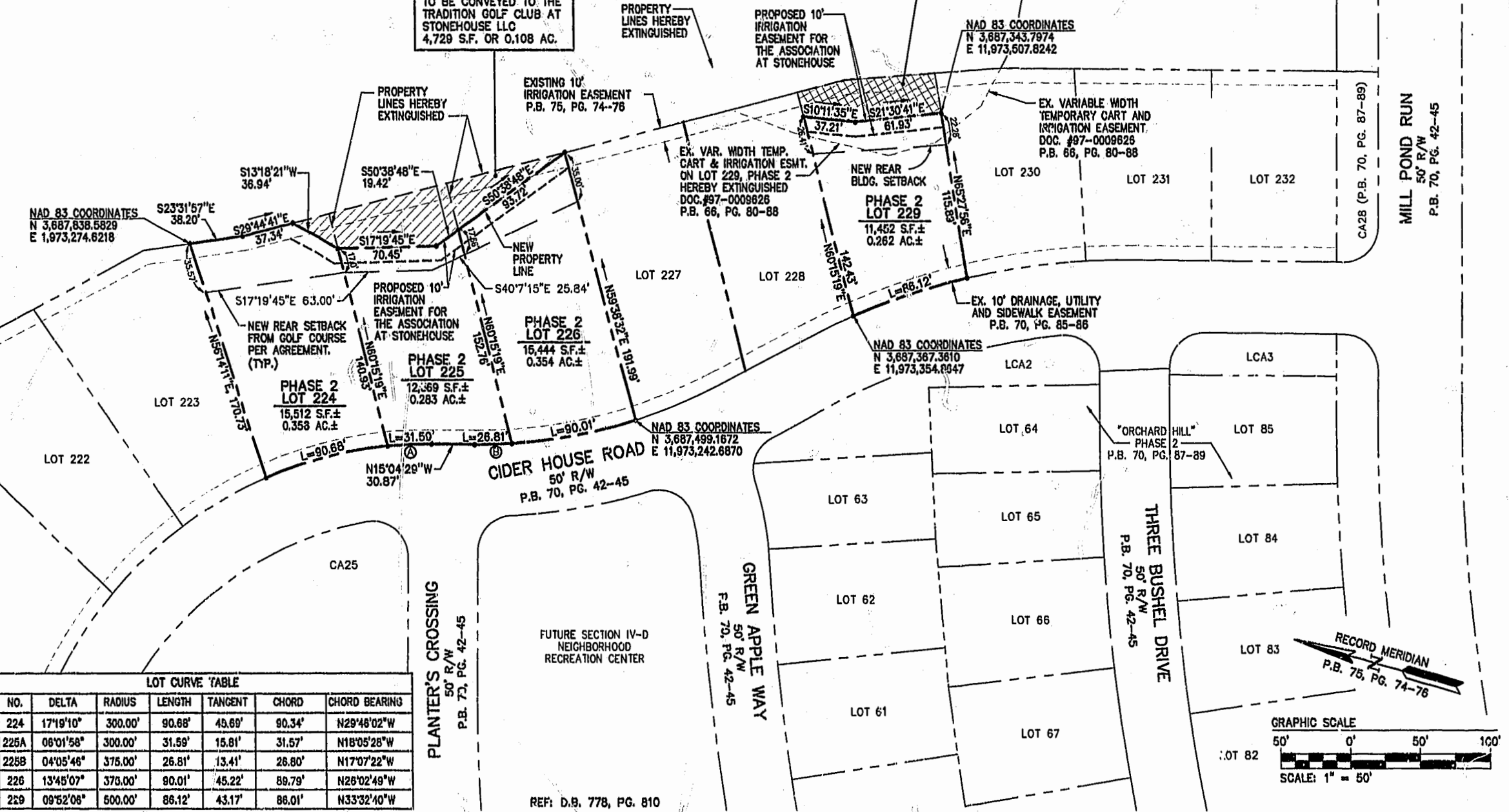
 DENOTES AREA REMOVED FROM CA31

PARCEL 12
HOLE NO. 13
THE TRADITION GOLF CLUB
AT STONEHOUSE LLC
DOCUMENT NO. 010010551

ADJUSTMENT PARCEL "E-2"
TO BE CONVEYED TO THE
TRADITION GOLF CLUB AT
STONEHOUSE LLC
2,657 S.F. OR 0.061 AC.

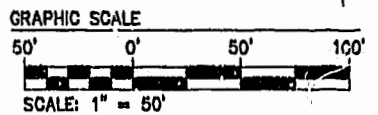
ADJUSTMENT PARCEL "D"
TO BE CONVEYED TO THE
TRADITION GOLF CLUB AT
STONEHOUSE LLC
4,729 S.F. OR 0.108 AC.

STONEHOUSE
BENT TREE
COMMON AREA
PARCEL CA31
STONEHOUSE
DEVELOPMENT
COMPANY, L.L.C.
P.B. 78, PG. 30&31

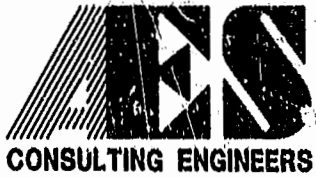


LOT CURVE TABLE

NO.	DELTA	RADIUS	LENGTH	TANGENT	CHORD	CHORD BEARING
224	17°19'10"	300.00'	90.68'	49.69'	90.34'	N29°46'02"W
225A	06°01'58"	300.00'	31.59'	15.81'	31.57'	N18°05'28"W
225B	04°05'46"	375.00'	26.81'	13.41'	26.80'	N17°07'22"W
226	13°45'07"	375.00'	90.01'	45.22'	89.79'	N26°02'49"W
229	09°52'08"	500.00'	86.12'	43.17'	86.01'	N33°32'40"W



89220p5c.dwg



5248 Olde Towne Road, Suite 1
Williamsburg, Virginia 23188
(757) 253-0040
Fax (757) 220-8994

PLAT OF PROPERTY LINE ADJUSTMENT, LOT LINE
EXTINGUISHMENT AND SETBACK DELINEATION
BEING LOTS 209-210, 224-226 & 229
THE OVERLOOK AT ORCHARD HILL PHASE 2

STONEHOUSE

STONEHOUSE DISTRICT JAMES CITY COUNTY VIRGINIA



City of Williamsburg & County of James City		Circuit Court: This PLAT was recorded on	
		16 June 2002	
		at 1:00 PM, P.B. 84, PG. 2-24	
		DOCUMENT # 020001484	
		BETSY B. WOOLFRIDGE, CLERK	
		Betsy Woolridge, Dep. Clerk	
No.	DATE	REVISION / COMMENT / NOTE	BY
1	11/13/01	REVISED DUE TO CHANGE IN OWNERSHIP	VMB

Designed AES	Drawn AWT
Scale 1"=50'	Date 6/19/01
Project No. 8922	
Drawing No. 3 OF 3	