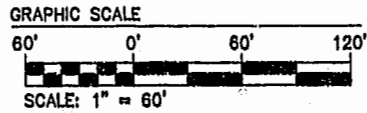


NOTE:
 AT THE TIME OF THIS SURVEY
 ROADS AND SIDEWALK ARE UNDER
 CONSTRUCTION. (PROPOSED
 LOCATION SHOWN), WATER &
 & SANITARY SYSTEM ARE IN PLACE.

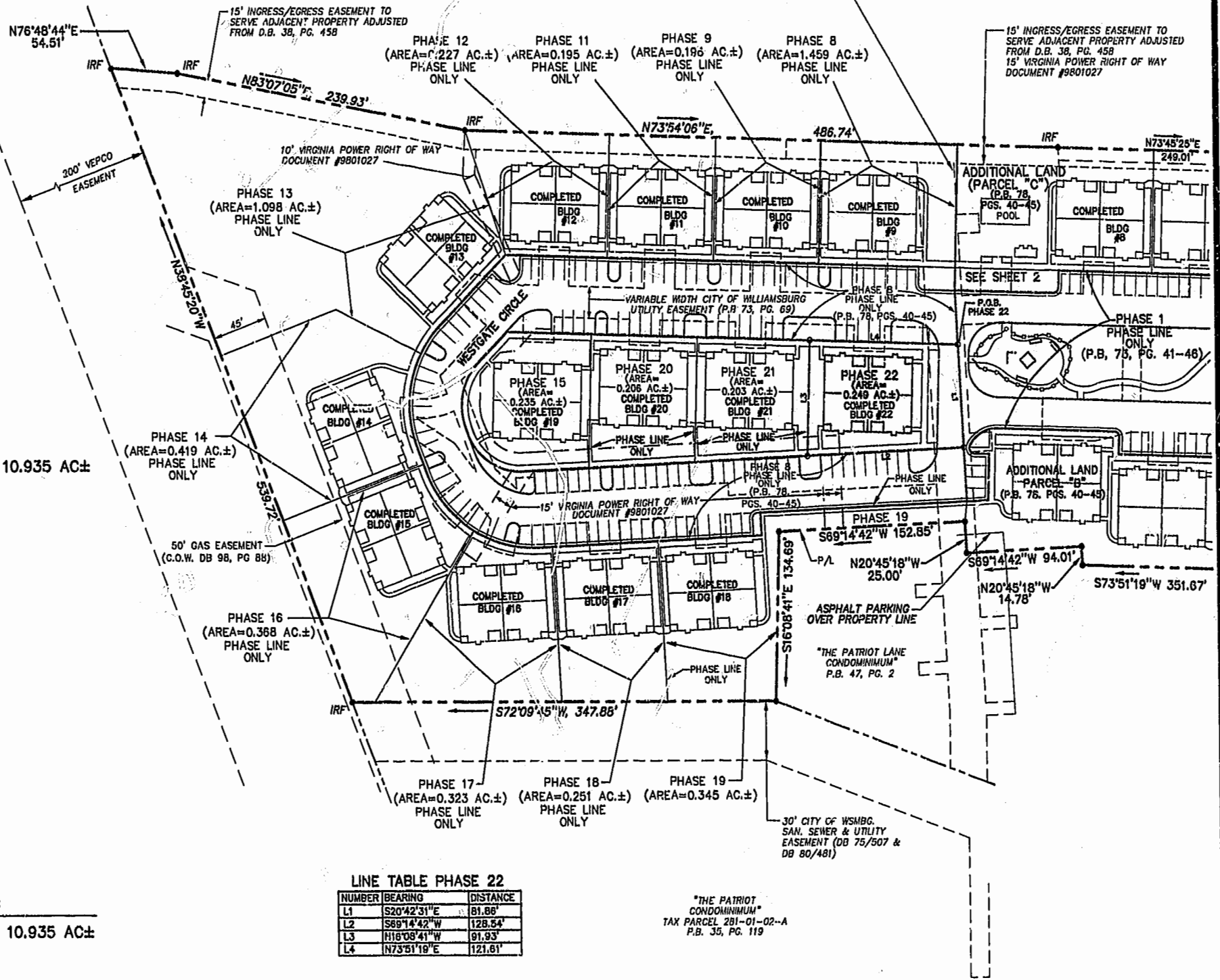


N/F
 JAMESTOWN ACADEMY
 TAX PARCEL 281-03-A

N OR F
 WARBURTON & MAHONE ESTATE
 TAX PARCEL 282-A-001

VARIABLE WIDTH CITY OF WILLIAMSBURG
 SAN. SEWER & UTILITY
 EASEMENT (DB 75/507 &
 DB 80/481)

15' INGRESS/EGRESS EASEMENT TO
 SERVE ADJACENT PROPERTY ADJUSTED
 FROM D.B. 38, PG. 458
 15' VIRGINIA POWER RIGHT OF WAY
 DOCUMENT #9801027



AREA

- TOTAL AREA PARCEL 1= 10.935 AC±
- PHASE TWENTY-TWO= 0.249 AC.±
 - PHASE TWENTY-ONE= 0.203 AC.±
 - PHASE TWENTY= 0.206 AC.±
 - PHASE NINETEEN= 0.345 AC.±
 - PHASE EIGHTEEN= 0.251 AC.±
 - PHASE SEVENTEEN= 0.323 AC.±
 - PHASE SIXTEEN= 0.368 AC.±
 - PHASE FIFTEEN= 0.235 AC.±
 - PHASE FOURTEEN= 0.419 AC.±
 - PHASE THIRTEEN= 1.098 AC.±
 - PHASE TWELVE= 0.227 AC.±
 - PHASE ELEVEN= 0.195 AC.±
 - PHASE TEN= 0.222 AC.±
 - PHASE NINE= 0.196 AC.±
 - PHASE EIGHT= 1.459 AC.±
 - PHASE SEVEN= 0.216 AC.±
 - PHASE SIX= 0.343 AC.±
 - PHASE FIVE= 0.235 AC.±
 - PHASE FOUR= 0.200 AC.±
 - PHASE THREE= 0.196 AC.±
 - PHASE TWO= 0.195 AC.±
 - PHASE ONE= 2.377 AC.±

ADDITIONAL AREA (PARCEL "B")= 0.781 AC.±
 ADDITIONAL AREA (PARCEL "C")= 0.396 AC.±

TOTAL= 10.935 AC±

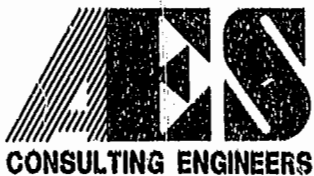
LINE TABLE PHASE 22

NUMBER	BEARING	DISTANCE
L1	S20°42'31"E	81.86'
L2	S69°14'42"W	128.54'
L3	N18°08'41"W	91.93'
L4	N73°51'19"E	121.61'

"THE PATRIOT LANE
 CONDOMINIUM"
 TAX PARCEL 281-01-02-A
 P.B. 35, PG. 119

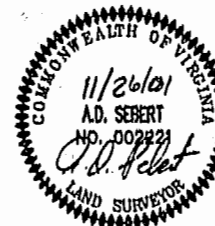
11_30_01-08:11 8395P223.DWG

JFS



2548 Olde Towne Road, Suite 1
 Williamsburg, Virginia 23188
 (757) 253-0040
 Fax (757) 220-8994

PLAT OF CONDOMINIUM
 WESTGATE AT WILLIAMSBURG,
 A CONDOMINIUM
 PHASE TWENTY-TWO
 OWNED BY: 752 L.L.C.,
 A VIRGINIA LIMITED LIABILITY COMPANY
 CITY OF WILLIAMSBURG VIRGINIA



City of Williamsburg & County of James City Circuit Court: This PLAT was recorded on 10 Nov 2001 at 2:41 PM, P.B. 35, PG. 119-20 DOCUMENT # 020063 BETSY B. WOOLRIDGE, CLERK <i>Betsy Woolridge</i> Dep. Clerk			
No.	DATE	REVISION / COMMENT / NOTE	BY

Designed GTW/ADS	Drawn JFS
Scale 1"= 60'	Date 11/26/01
Project No. 8395-6	
Drawing No. 3 OF 6	