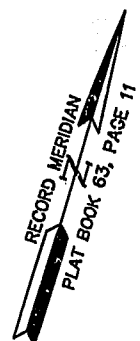
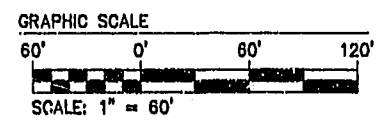


NOTE:
AT THE TIME OF THIS SURVEY
ROADS AND SIDEWALK ARE UNDER
CONSTRUCTION. (PROPOSED
LOCATION SHOWN). WATER &
& SANITARY SYSTEM ARE IN PLACE.

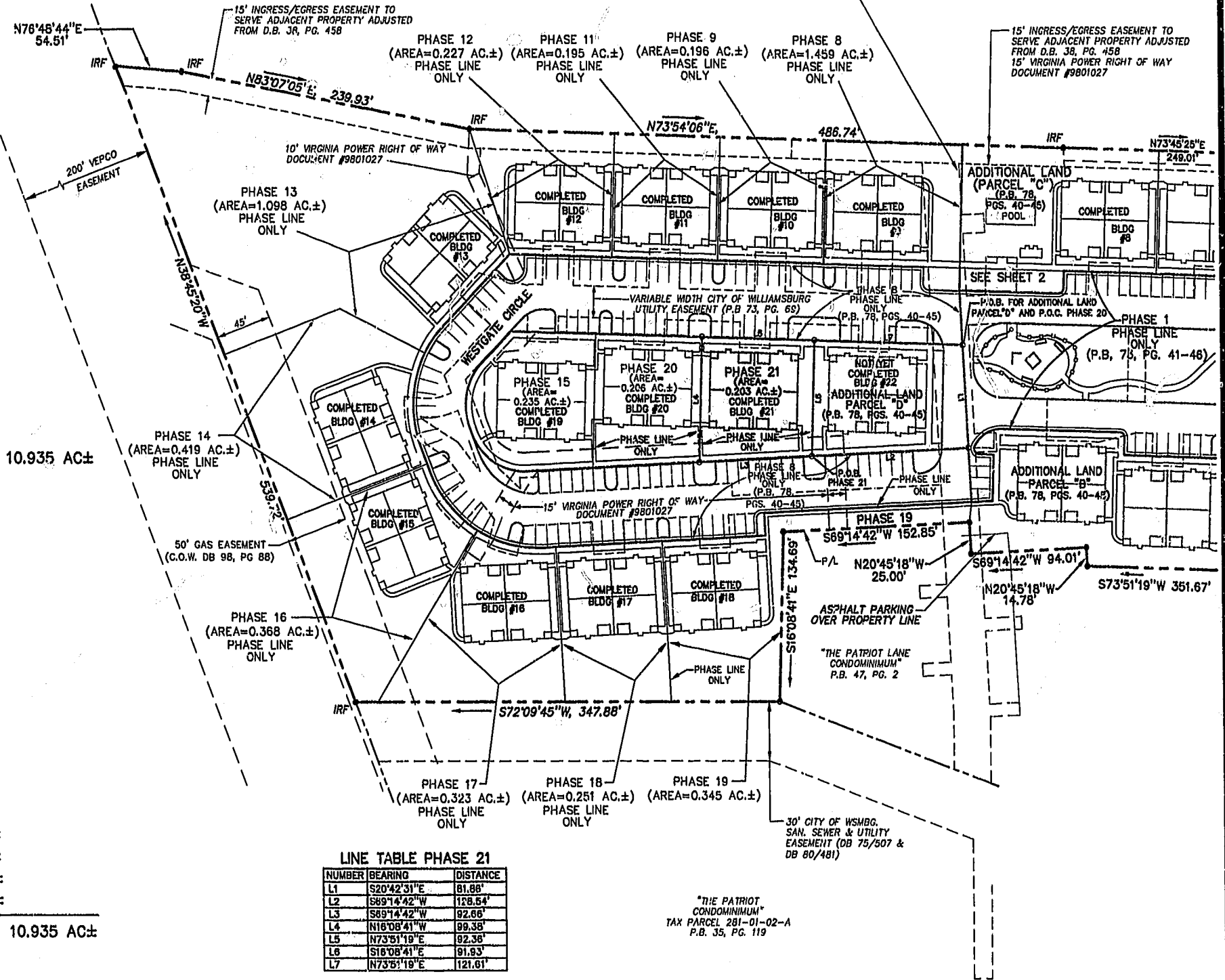


N/F
JAMESTOWN ACADEMY
TAX PARCEL 281-03-A

N OR F
WARBURTON & MAHONE ESTATE
TAX PARCEL 282-A-001

VARIABLE WIDTH CITY OF WILLIAMSBURG
SAN. SEWER & UTILITY
EASEMENT (DB 75/507 &
DB 80/481)

15' INGRESS/EGRESS EASEMENT TO
SERVE ADJACENT PROPERTY ADJUSTED
FROM D.B. 38, PG. 458
15' VIRGINIA POWER RIGHT OF WAY
DOCUMENT #9801027



AREA

TOTAL AREA PARCEL 1= 10.935 AC±

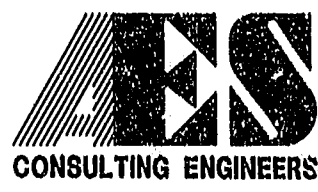
PHASE TWENTY-ONE=	0.203 AC±
PHASE TWENTY=	0.206 AC±
PHASE NINETEEN=	0.345 AC±
PHASE EIGHTEEN=	0.251 AC±
PHASE SEVENTEEN=	0.323 AC±
PHASE SIXTEEN=	0.368 AC±
PHASE FIFTEEN=	0.235 AC±
PHASE FOURTEEN=	0.419 AC±
PHASE THIRTEEN=	1.098 AC±
PHASE TWELVE=	0.227 AC±
PHASE ELEVEN=	0.195 AC±
PHASE TEN=	0.222 AC±
PHASE NINE=	0.196 AC±
PHASE EIGHT=	1.459 AC±
PHASE SEVEN=	0.216 AC±
PHASE SIX=	0.343 AC±
PHASE FIVE=	0.235 AC±
PHASE FOUR=	0.200 AC±
PHASE THREE=	0.196 AC±
PHASE TWO=	0.195 AC±
PHASE ONE=	2.377 AC±
ADDITIONAL AREA (PARCEL "B")=	0.781 AC±
ADDITIONAL AREA (PARCEL "C")=	0.396 AC±
ADDITIONAL AREA (PARCEL "D")=	0.249 AC±
TOTAL=	10.935 AC±

LINE TABLE PHASE 21

NUMBER	BEARING	DISTANCE
L1	S20°42'31"E	81.88'
L2	S89°14'42"W	128.54'
L3	S89°14'42"W	92.66'
L4	N18°08'41"W	99.38'
L5	N73°51'19"E	92.38'
L6	S16°08'41"E	91.93'
L7	N73°51'19"E	121.81'

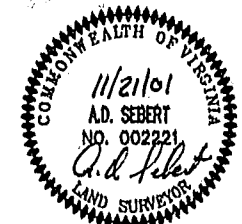
"THE PATRIOT LANE
CONDOMINIUM"
TAX PARCEL 281-01-02-A
P.B. 35, PG. 119

11.08.01-15:19 8395213.DWG



5248 Olde Towne Road, Suite 1
Williamsburg, Virginia 23188
(757) 253-0040
Fax (757) 220-8994

PLAT OF CONDOMINIUM
WESTGATE AT WILLIAMSBURG,
A CONDOMINIUM
PHASE TWENTY-ONE
OWNED BY: 752 L.L.C.,
A VIRGINIA LIMITED LIABILITY COMPANY
CITY OF WILLIAMSBURG VIRGINIA



No.	DATE	REVISION / COMMENT / NOTE	BY

City of Williamsburg & County of James City
Circuit Court: This PLAT was recorded on
10 Jan 2002
at 2:28 PM/PH. PB 84 PG 69-74
DOCUMENT # 020062
BETSY B. WOOLKIDGE, CLERK
Betsy B. Woolkidge, Dep. Clerk

Designed GTW/ADS	Drawn JFS
Scale 1" = 60'	Date 11/21/01
Project No. 8395-6	
Drawing No. 3 OF 6	