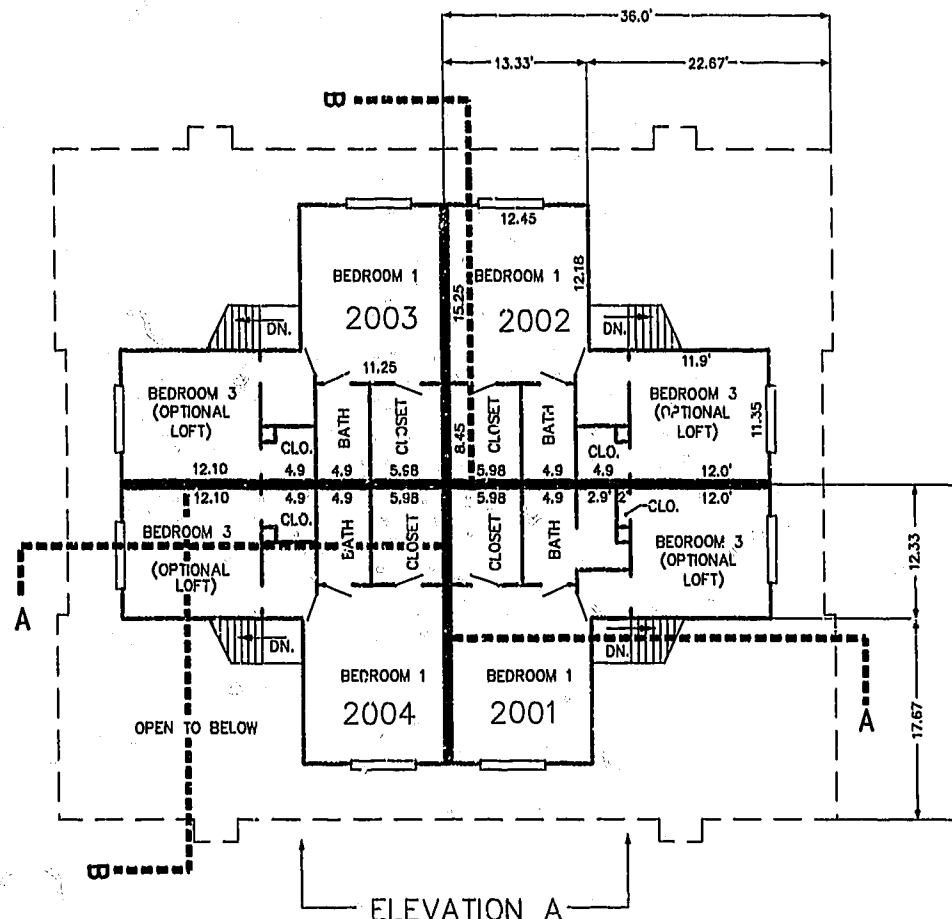


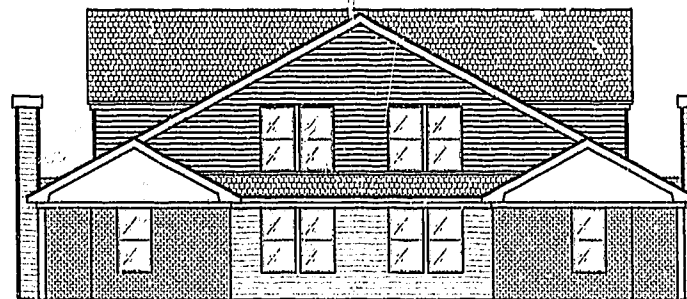
FIRST FLOOR PLAN  
(UNIT #2002 IS TYPICAL)



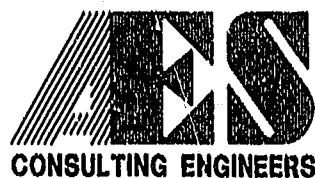
SECOND FLOOR PLAN  
(UNIT #2002 IS TYPICAL)



ELEVATION A

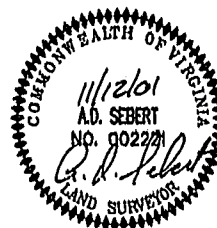


ELEVATION B



5248 Olde Towne Road, Suite 1  
Williamsburg, Virginia 23188  
(757) 253-0040  
Fax (757) 220-8994

PLAT OF CONDOMINIUM  
WESTGATE AT WILLIAMSBURG,  
A CONDOMINIUM  
PHASE TWENTY  
OWNED BY: 752 L.L.C.,  
A VIRGINIA LIMITED LIABILITY COMPANY  
CITY OF WILLIAMSBURG VIRGINIA



No.	DATE	REVISION / COMMENT / NOTE	BY

City of Williamsburg & County of James City  
Circuit Court: This PLAT was recorded on  
10/28/01 (See 2002)  
at 2:10 PM, PB 27 PG 63-68  
DOCUMENT # 220061  
BETSY B. WOOLRIDGE, CLERK  
Betsy B. Woolridge, Dep. Clerk

Designed GTW/ADS	Drawn JFS
Scale 1" = 10'	Date 11/12/01
Project No. 8395-6	
Drawing No. 5 OF 6	

8395-6-05-488  
11/12/01-10:57