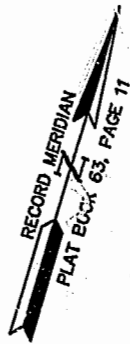
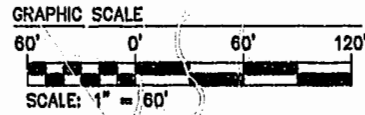


NOTE:  
AT THE TIME OF THIS SURVEY  
ROADS AND SIDEWALK ARE UNDER  
CONSTRUCTION, (PROPOSED  
LOCATION SHOWN). WATER &  
& SANITARY SYSTEM ARE IN PLACE.



N/F  
JANESTOWN ACADEMY  
TAX PARCEL 281-03-A

N OR F  
WARRBORTON & MAHNE ESTATE  
TAX PARCEL 282-A-001

VARIABLE WIDTH CITY OF WILLIAMSBURG  
SAN. SEWER & UTILITY  
EASEMENT (DB 75/507 &  
DB 80/481)

15' INGRESS/EGRESS EASEMENT TO  
SERVE ADJACENT PROPERTY ADJUSTED  
FROM D.B. 38, PG. 458  
15' VIRGINIA POWER RIGHT OF WAY  
DOCUMENT #9801027

**AREA**

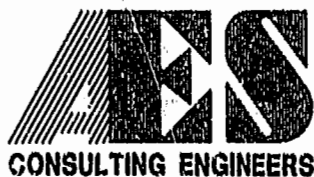
TOTAL AREA PARCEL 1= 10.935 AC±

PHASE TWENTY=	0.206 AC±
PHASE NINETEEN=	0.345 AC±
PHASE EIGHTEEN=	0.251 AC±
PHASE SEVENTEEN=	0.323 AC±
PHASE SIXTEEN=	0.368 AC±
PHASE FIFTEEN=	0.235 AC±
PHASE FOURTEEN=	0.419 AC±
PHASE THIRTEEN=	1.098 AC±
PHASE TWELVE=	0.227 AC±
PHASE ELEVEN=	0.195 AC±
PHASE TEN=	0.222 AC±
PHASE NINE=	0.196 AC±
PHASE EIGHT=	1.459 AC±
PHASE SEVEN=	0.216 AC±
PHASE SIX=	0.343 AC±
PHASE FIVE=	0.235 AC±
PHASE FOUR=	0.200 AC±
PHASE THREE=	0.196 AC±
PHASE TWO=	0.195 AC±
PHASE ONE=	2.377 AC±
ADDITIONAL AREA (PARCEL "B")=	0.781 AC±
ADDITIONAL AREA (PARCEL "C")=	0.396 AC±
ADDITIONAL AREA (PARCEL "D")=	0.452 AC±
<b>TOTAL=</b>	<b>10.935 AC±</b>

LINE TABLE PHASE 20

NUMBER	BEARING	DISTANCE
L1	S20°42'31"E	81.88'
L2	S89°14'42"W	221.10'
L3	S89°14'42"W	87.28'
L4	N16°08'41"W	108.38'
L5	N73°51'18"E	87.00'
L6	S16°08'41"E	99.38'
L7	N73°51'18"E	213.96'

11.07.01-13.11 8195P203.DWG



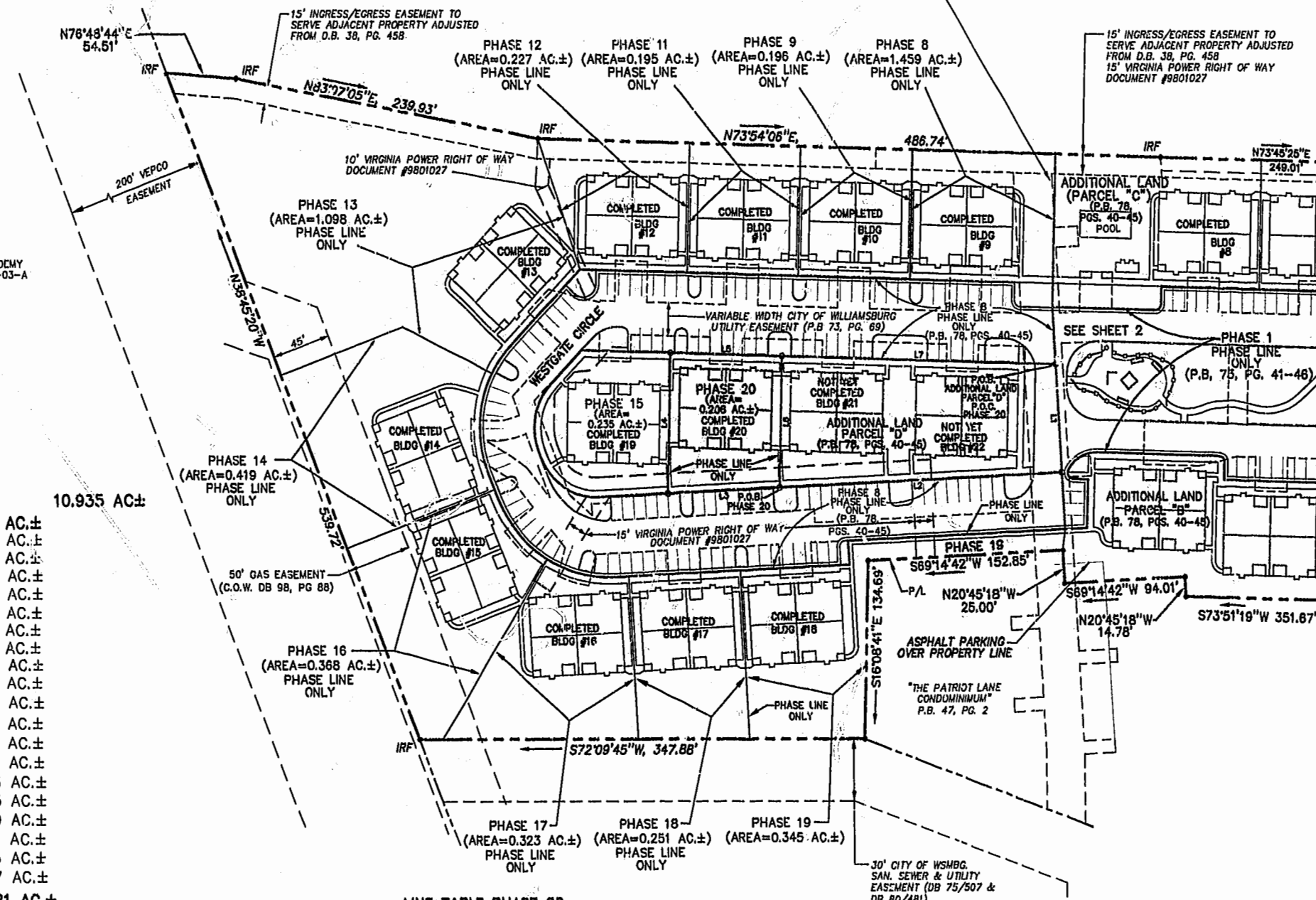
5248 Olde Towne Road, Suite 1  
Williamsburg, Virginia 23108  
(757) 253-0040  
Fax (757) 220-8994

PLAT OF CONDOMINIUM  
WESTGATE AT WILLIAMSBURG,  
A CONDOMINIUM  
PHASE TWENTY  
OWNED BY: 752 L.L.C.,  
A VIRGINIA LIMITED LIABILITY COMPANY  
CITY OF WILLIAMSBURG VIRGINIA



No.	DATE	REVISION / COMMENT / NOTE	BY

Designed GTW/ADS	Drawn JFS
Scale 1" = 60'	Date 11/12/01
Project No. 8395-6	
Drawing No. 3 OF 6	



"THE PATRIOT LANE  
CONDOMINIUM"  
TAX PARCEL 281-01-02-A  
P.B. 35, PG. 119