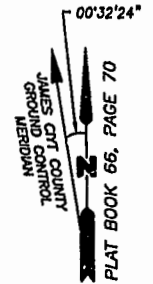


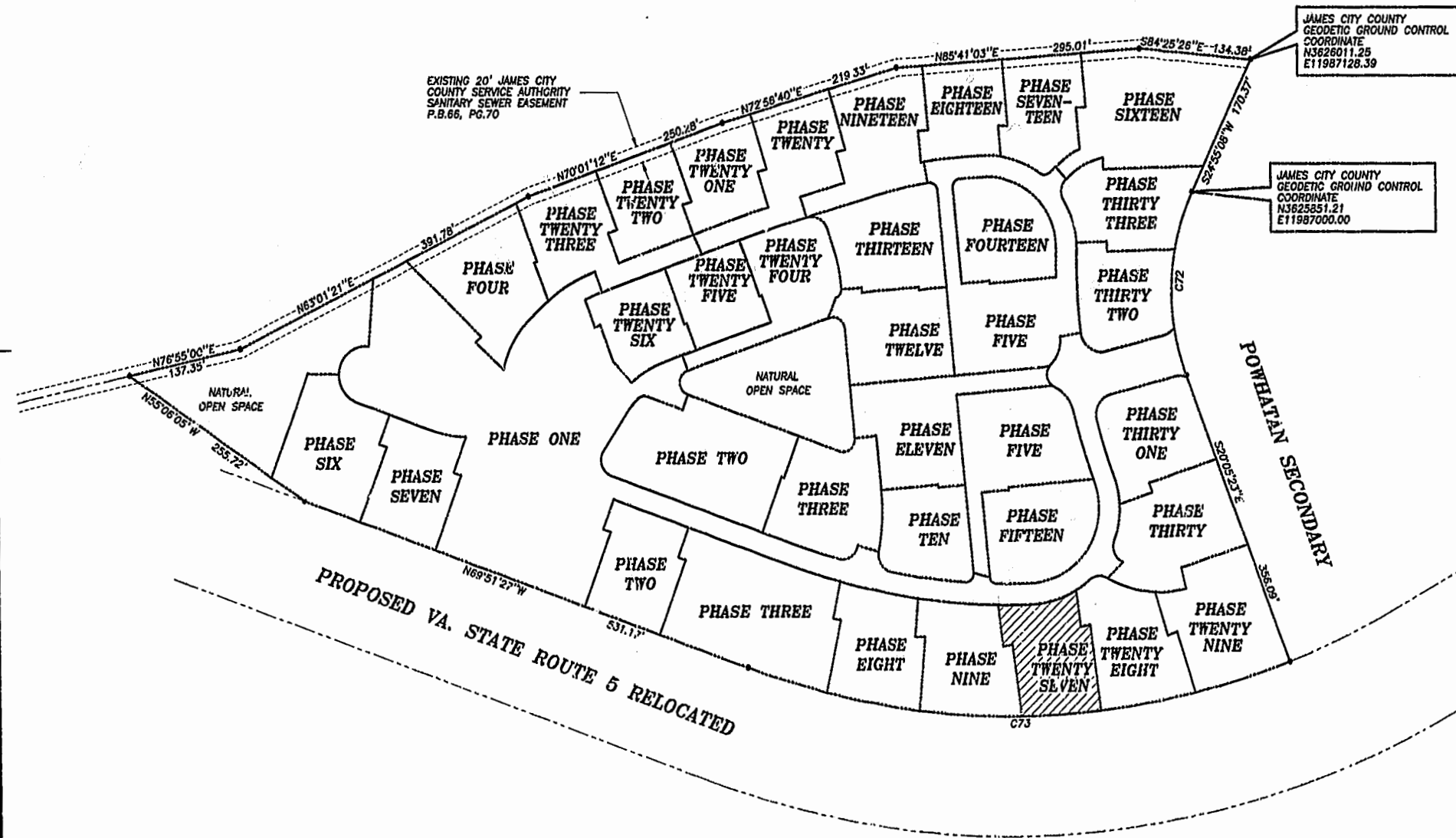
AMENDED PLAT OF SUBDIVISION  
**WATERFORD**  
 AT  
**POWHATAN SECONDARY**  
 PHASE TWENTY-SEVEN  
 BERKELEY DISTRICT  
 JAMES CITY COUNTY, VIRGINIA

DATE: 10/21/98    SHEET 2 OF 3    SCALE: 1"=100'  
 PROJECT NO: 97-008    DRAWN BY: SJB

**SLEDD & ASSOCIATES, P.C.**  
 ENGINEERS PLANNERS SURVEYORS  
 11832 ROCK LANDING DRIVE, SUITE 203  
 NEWPORT NEWS, VIRGINIA 23608  
 (757) 873-3386

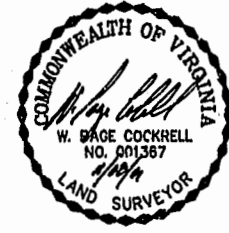


NOW OR FORMERLY  
 POWHATAN ENTERPRISES, INC.



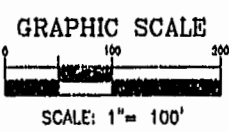
JAMES CITY COUNTY  
 GEODETIC GROUND CONTROL  
 COORDINATE  
 N3626011.25  
 E11987128.39

JAMES CITY COUNTY  
 GEODETIC GROUND CONTROL  
 COORDINATE  
 N3625851.21  
 E11987000.00



PROPOSED VA. STATE ROUTE 5 RELOCATED

POWHATAN SECONDARY



**CURVE DATA**

NUMBER	DELTA	RADIUS	LENGTH	TANGENT	CHORD	CHORD BEARING
C72	45°00'31"	280.00'	219.95'	116.00'	214.34'	S02°24'52"W
C73	41°26'14"	924.91'	668.91'	349.84'	654.43'	S89°26'26"W

City of Williamsburg & County of James City  
 Circuit Court. This PLAT was recorded on  
 28 Nov 2001  
 at 10:24 AM/PM, PB 84 PG 49-51  
 DOCUMENT # 010024230  
 BETSY B. WOOLRIDGE, CLERK  
*Betsy Woolridge* Clerk