

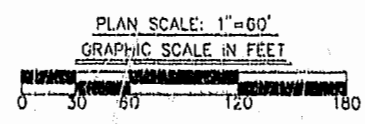
City of Williamsburg & County of James City  
Circuit Court: This PLAT was recorded on  
December 26, 2001  
at 2:50 AM PM, PG 84 of 44  
DOCUMENT # 010024124  
BETSY B. WOOLRIDGE, CLERK  
*Betsy Woolridge*, Dep. Clerk

SUBDIVISION PLAT  
OF  
POWHATAN OF WILLIAMSBURG SECONDARY  
PHASE VI-A  
BERKELEY DISTRICT  
JAMES CITY COUNTY, VIRGINIA  
SCALE: 1"=60' DATE: 6/19/2001  
SHEET 3 OF 4

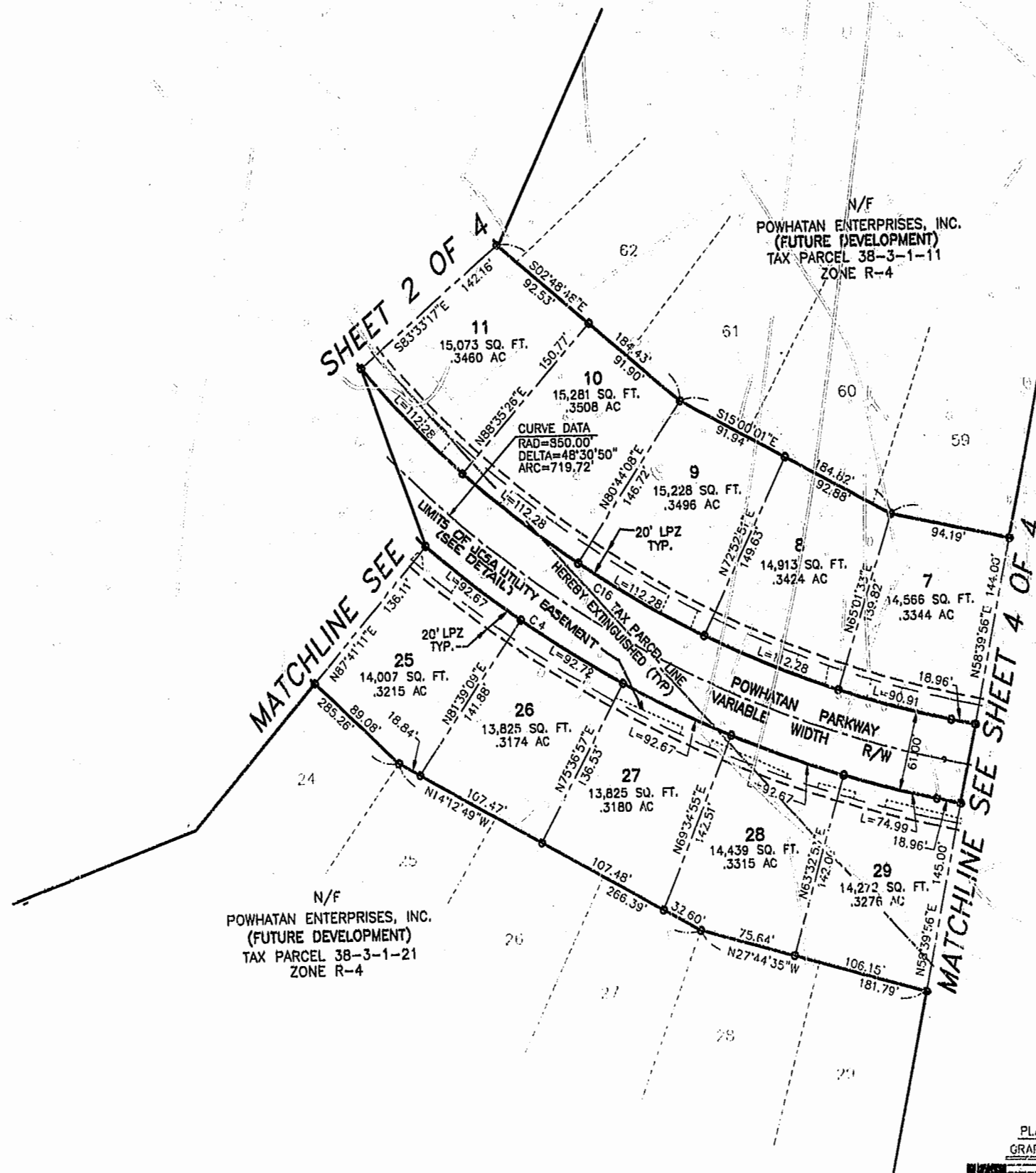


Engineers • Planners • Surveyors  
Landscape Architects • Environmental Consultants

4029 IRONBOUND ROAD, SUITE 100  
WILLIAMSBURG, VA 23185  
TEL (757) 253-2975 FAX (757) 229-0049



PLAN SCALE: 1"=60'  
GRAPHIC SCALE IN FEET



N/F  
POWHATAN ENTERPRISES, INC.  
(FUTURE DEVELOPMENT)  
TAX PARCEL 38-3-1-21  
ZONE R-4

N/F  
POWHATAN ENTERPRISES, INC.  
(FUTURE DEVELOPMENT)  
TAX PARCEL 38-3-1-11  
ZONE R-4

SHEET 2 OF 4

MATCHLINE SEE SHEET 4 OF 4

MATCHLINE SEE SHEET 2 OF 4