

#010024124

84 PAGE 45

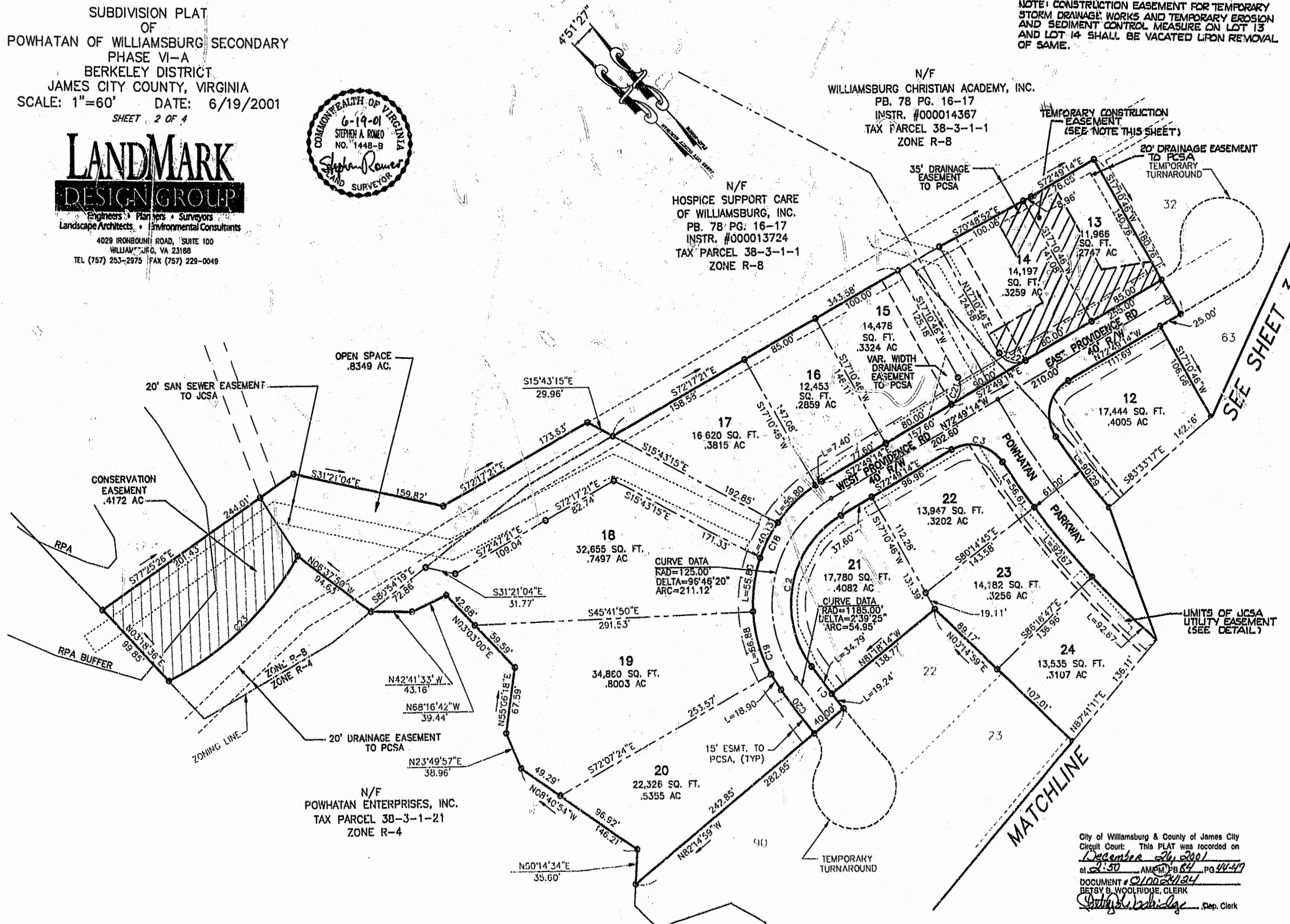
SUBDIVISION PLAT  
OF  
POWHATAN OF WILLIAMSBURG SECONDARY  
PHASE VI-A  
BERKELEY DISTRICT  
JAMES CITY COUNTY, VIRGINIA  
SCALE: 1"=60' DATE: 6/19/2001  
SHEET 2 OF 4



**LANDMARK**  
**DESIGN GROUP**

Engineers • Planners • Surveyors  
Landscape Architects • Environmental Consultants  
4029 IRONBOUND ROAD, SUITE 100  
WILLIAMSBURG, VA 23188  
TEL (757) 253-2975 FAX (757) 229-0049

NOTE: CONSTRUCTION EASEMENT FOR TEMPORARY  
STORM DRAINAGE WORKS AND TEMPORARY EROSION  
AND SEDIMENT CONTROL MEASURE ON LOT 13  
AND LOT 14 SHALL BE VACATED UPON REMOVAL  
OF SAME.



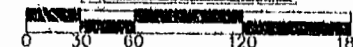
SEE SHEET 3

MATCHLINE

THE COORDINATES SHOWN ON THIS PLAT ARE TIED TO NAD 83;  
REFERENCE JCC STATION 322 AND 321RM3AZ.

City of Williamsburg & County of James City  
Circuit Court: This PLAT was recorded on  
December 26, 2001  
at 2:50 AM PM, PG 44-47  
DOCUMENT # 010024124  
BETSY B. WOOLRIDGE, CLERK  
*Betsy Woolridge* Dep. Clerk

PLAN SCALE: 1"=60'  
GRAPHIC SCALE IN FEET



DRAWN BY: LFV  
CHKD. BY: AJR  
PROJ. NO.: 1780041-001.10  
DWG. NO.: 12011W