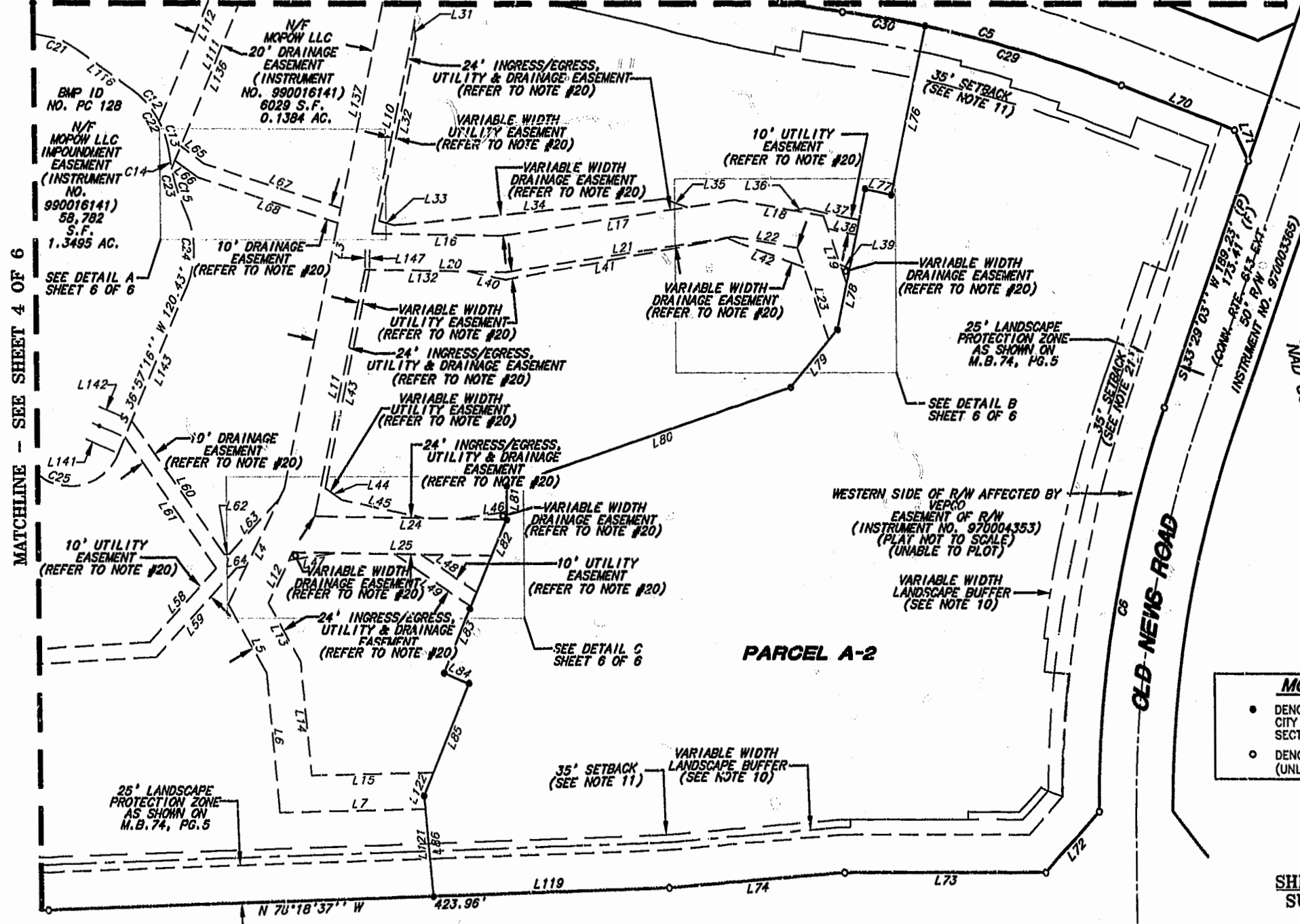


MATCHLINE - SEE SHEET 5 OF 6

W.P. LARGE, INC.  
**WPL**  
 SURVEYING-ENGINEERING  
 PLANNING  
 244 MURRAY TRAIL  
 SUITE B  
 VIRGINIA BEACH, VIRGINIA  
 (804) 431-1041  
 (804) 465-1418 FAX.



MATCHLINE - SEE SHEET 4 OF 6

BMP ID NO. PC 128  
 N/F MOPOW LLC IMPOUNDMENT EASEMENT (INSTRUMENT NO. 990016141) 58,782 S.F. 1.3495 AC.  
 SEE DETAIL A SHEET 6 OF 6

N/F MOPOW LLC 20' DRAINAGE EASEMENT (INSTRUMENT NO. 990016141) 6029 S.F. 0.1384 AC.

10' DRAINAGE EASEMENT (REFER TO NOTE #20)

24' INGRESS/EGRESS, UTILITY & DRAINAGE EASEMENT (REFER TO NOTE #20)

VARIABLE WIDTH UTILITY EASEMENT (REFER TO NOTE #20)

VARIABLE WIDTH DRAINAGE EASEMENT (REFER TO NOTE #20)

10' UTILITY EASEMENT (REFER TO NOTE #20)

35' SETBACK (SEE NOTE 11)

VARIABLE WIDTH DRAINAGE EASEMENT (REFER TO NOTE #20)

25' LANDSCAPE PROTECTION ZONE AS SHOWN ON M.B. 74, PG. 5

SEE DETAIL B SHEET 6 OF 6

VARIABLE WIDTH UTILITY EASEMENT (REFER TO NOTE #20)

24' INGRESS/EGRESS, UTILITY & DRAINAGE EASEMENT (REFER TO NOTE #20)

VARIABLE WIDTH UTILITY EASEMENT (REFER TO NOTE #20)

24' INGRESS/EGRESS, UTILITY & DRAINAGE EASEMENT (REFER TO NOTE #20)

VARIABLE WIDTH DRAINAGE EASEMENT (REFER TO NOTE #20)

WESTERN SIDE OF R/W AFFECTED BY VEPKO EASEMENT OF R/W (INSTRUMENT NO. 970004353) (PLAT NOT TO SCALE) (UNABLE TO PLOT)

VARIABLE WIDTH LANDSCAPE BUFFER (SEE NOTE 10)

SEE DETAIL C SHEET 6 OF 6

PARCEL A-2

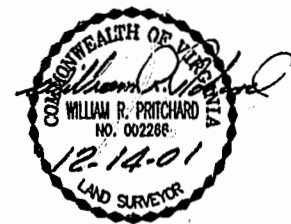
35' SETBACK (SEE NOTE 11)

VARIABLE WIDTH LANDSCAPE BUFFER (SEE NOTE 10)

25' LANDSCAPE PROTECTION ZONE AS SHOWN ON M.B. 74, PG. 5

**MONUMENT LEGEND**

- DENOTES MONUMENT SET PER JAMES CITY COUNTY SUBDIVISION ORDINANCE SECTION 10-34 TO 19-36
- DENOTES OLD PIN FOUND (UNLESS NOTED OTHERWISE)



SHEET 3 OF 6  
 SUBDIVISION

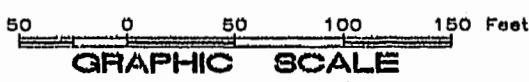
OF  
**MONTICELLO AT POWHATAN APARTMENTS**  
 PARCEL A  
 AREA DESIGNATION D  
 21.7638 ACRES TOTAL

AS SHOWN ON  
 SUBDIVISION PLAT  
 APARTMENT PARCEL NORTH SIDE OF NEWS ROAD  
 POWHATAN OF WILLIAMSBURG SECONDARY  
 BERKELEY DISTRICT - JAMES CITY COUNTY, VA.  
 PLAT RECORDED IN M.B. 74, PG. 6, IN THE CLERK'S OFFICE OF  
 THE CIRCUIT COURT, OF JAMES CITY COUNTY, VIRGINIA

SCALE 1"=60' DATE: DECEMBER 13, 2001

SEE SHEET 1 OF 6 FOR NOTES AND CERTIFICATIONS

SEE SHEET 6 OF 6 FOR LINE TABLE AND CURVE TABLE



City of Williamsburg & County of James City Circuit Court: This PLAT was recorded on December 31, 2001 at 2:15 P.M., P.B. 87 PG. 32-42  
 DOCUMENT # 010024015  
 BETSY B. WOOLRIDGE, CLERK  
*Betsy Woolridge* Clerk