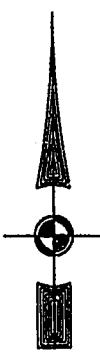


#010023350

84 PAGE 33

EXIST. 20' JAMES CITY COUNTY SERVICE AUTHORITY SAN. SEWER EASEMENT AS SHOWN IN AS-BUILT LOCATION. D.B. 141 - PG. 388



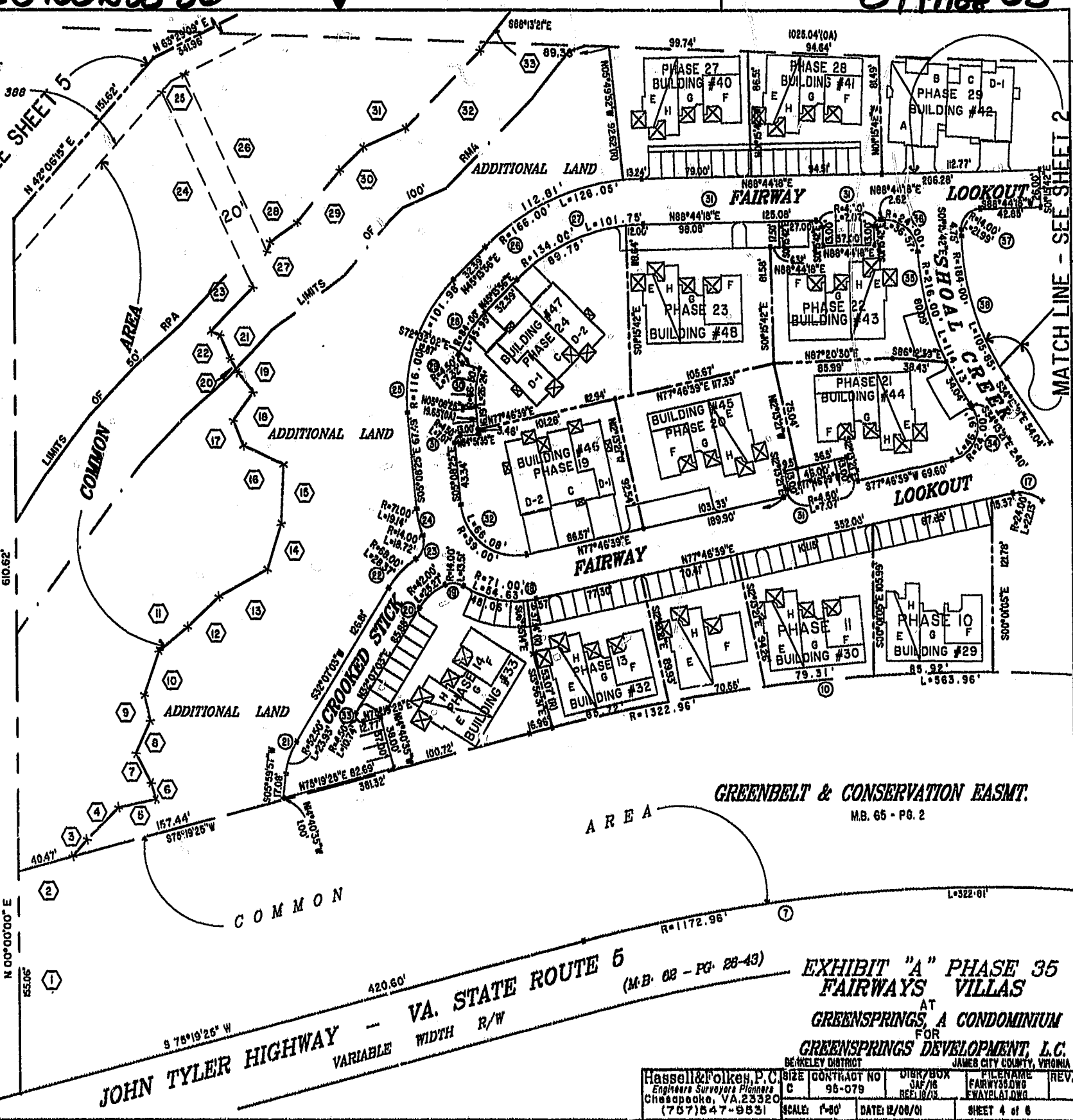
MATCH LINE - SEE SHEET 5

MATCH LINE - SEE SHEET 2

46-1-01-0-0001
"GREENSPRINGS PLANTATION"
(DB 322, PG 234)

City of Williamsburg & County of James City
Circuit Court: This PLAT was recorded on
14 (th) 2001
at 3:10 PM, PG. 24 PG. 30-35
DOCUMENT # 010023350
BETSY B. WOOLRIDGE, CLERK

Betsy Woolridge Dep. Clerk



VA. STATE ROUTE 6
JOHN TYLER HIGHWAY
VARIABLE WIDTH R/W

GREENBELT & CONSERVATION EASMT.
M.B. 65 - PG. 2

EXHIBIT "A" PHASE 35
FAIRWAYS VILLAS
AT
GREENSPRINGS, A CONDOMINIUM
FOR
GREENSPRINGS DEVELOPMENT, L.C.

Hassell & Polken, P.C. Engineers Surveyors Planners Chesapeake, VA. 23320 (757) 547-9531	SIZE C	CONTRACT NO 98-079	DRAWN BY JAF/16	DATE 12/18/01	FILENAME FAIRWAY35.DWG	REV. EWAYPLAT.DWG
SCALE: 1"=80'		DATE: 12/08/01		SHEET 4 of 6		