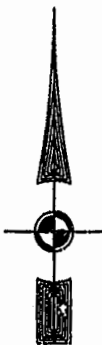


#010022646

84 PAGE 26

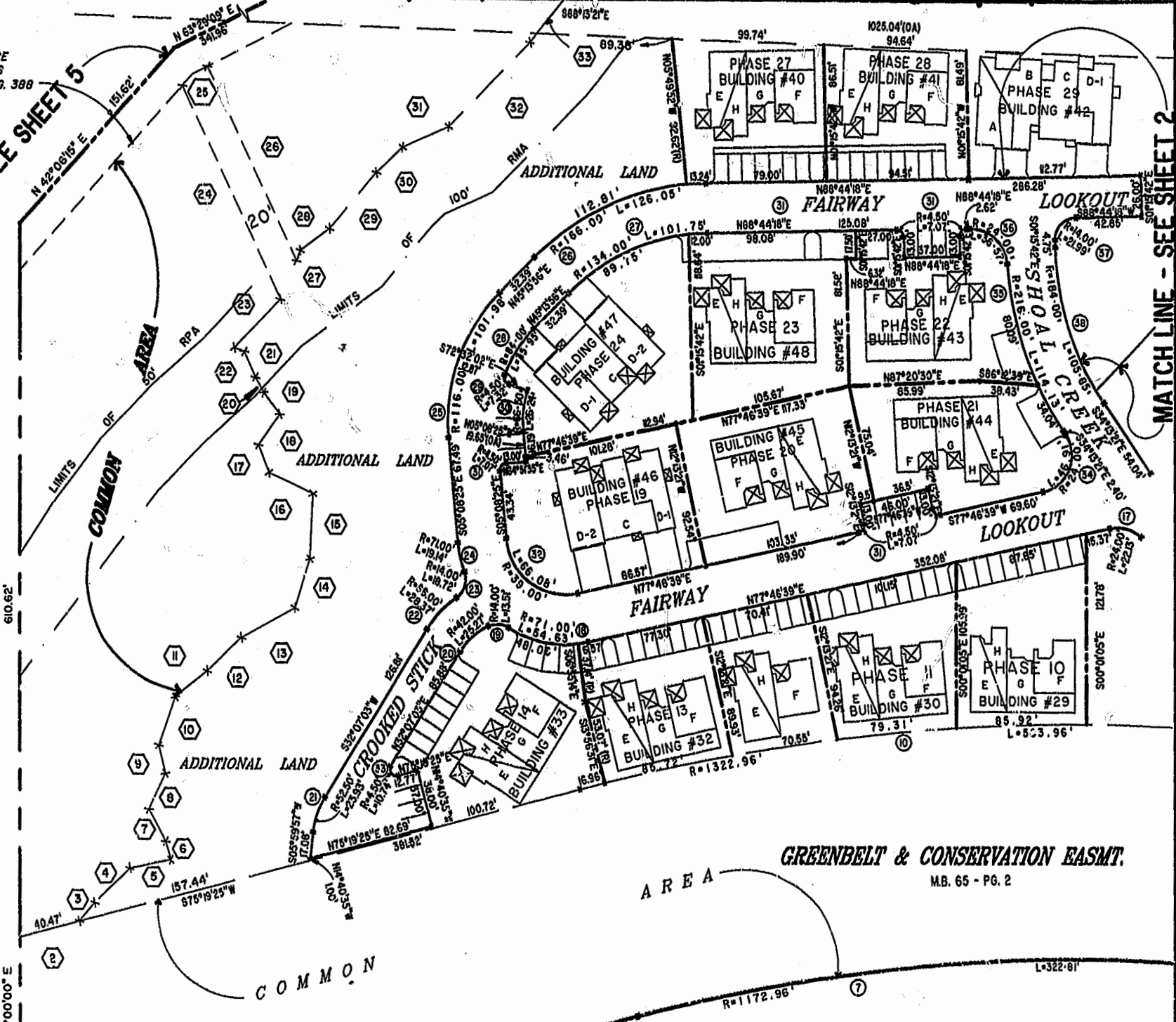
EXIST. 20' JAMES CITY COUNTY SERVICE AUTHORITY SAN. SEWER EASEMENT AS SHOWN IN AS-BUILT LOCATION. D.B. 141 - PG. 388



MATCH LINE - SEE SHEET 5

MATCH LINE - SEE SHEET 2

46-1-01-0-0001 "GREENSPRINGS PLANTATION" (DB 322, PG 254)



JOHN TYLER HIGHWAY - VA. STATE ROUTE 65 (M.B. 62 - PG. 28-43) VARIABLE WIDTH R/W

GREENBELT & CONSERVATION EASMT. M.B. 65 - PG. 2

EXHIBIT "A" PHASE 34 FAIRWAYS VILLAS AT GREENSPRINGS, A CONDOMINIUM FOR GREENSPRINGS DEVELOPMENT, L.C.

City of Williamsburg & County of James City Circuit Court. This PLAT was recorded on December 1, 2001 at 2:05 PM, PG. 23-28 DOCUMENT # 010022646 Betsy B. Woolridge, Clerk

Hassell & Folkes, P.C. Engineers Surveyors Planners Chesapeake, VA 23320 (757) 547-9331	SIZE: C	CONTRACT NO: 95-079	DISK/BOX: 8AE/16	FILENAME: FARWY34.DWG	REV: FWAYPLAT.DWG
SCALE: 1"=50'	DATE: 11/21/01	SHEET 4 of 6			