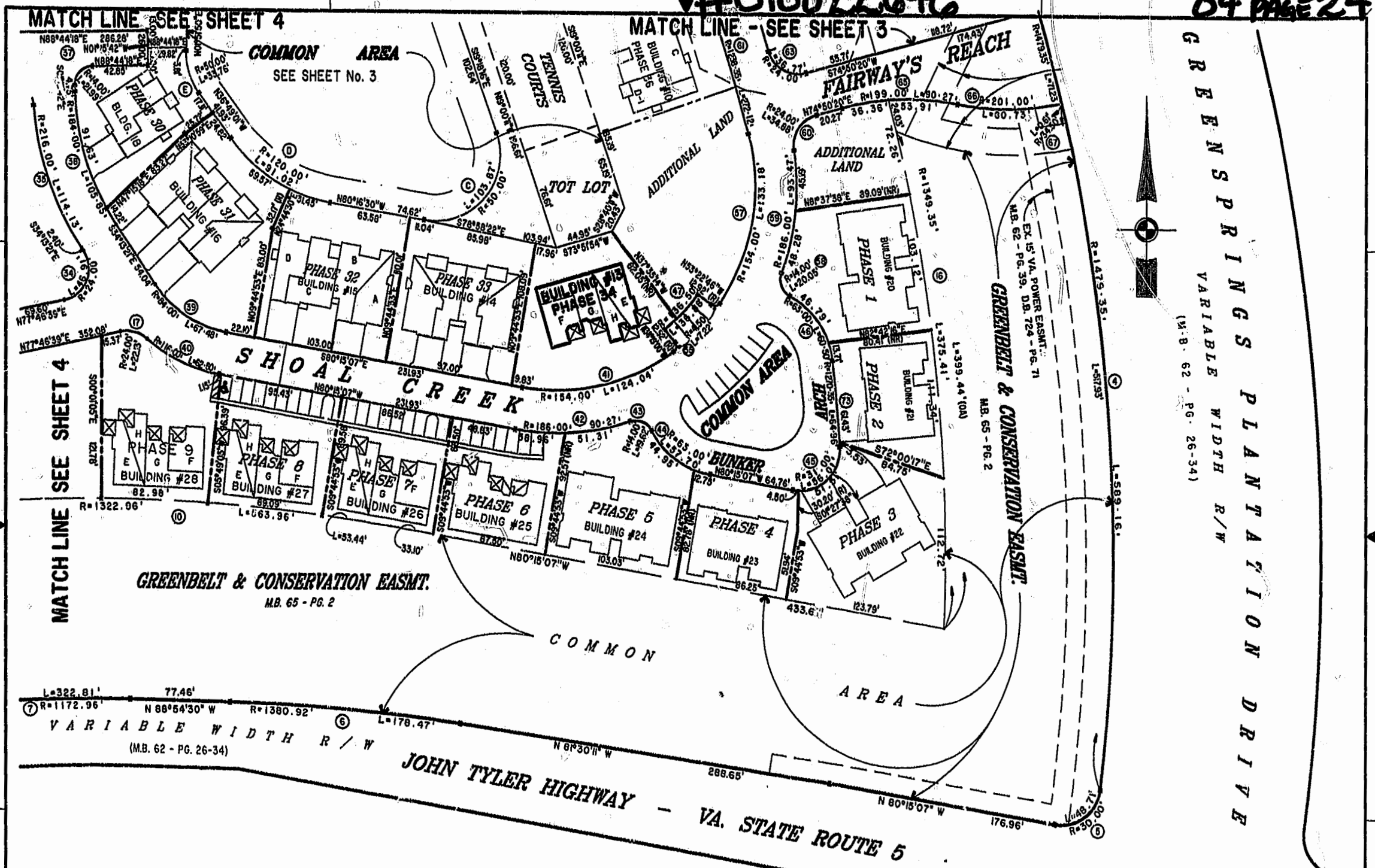


#010022646

84 PAGE 24



GREENBELT & CONSERVATION DRIVE
 VARIABLE WIDTH R/W
 (M.B. 62 - PG. 26-34)

GREENBELT & CONSERVATION EASMT.
 M.B. 65 - PG. 2

MATCH LINE SEE SHEET 4

City of Williamsburg & County of James City
 Circuit Court: This PLAT was recorded on
 December 1, 2001
 at 2:05 P.M. AM/PH, PG. 24, PG. 23, 24
 DOCUMENT # 010022646
 BETSY B. WOOLRIDGE, CLERK
 Betsy Woolridge, Dep. Clerk



EXHIBIT "A" PHASE 34
FAIRWAYS VILLAS
 AT
GREENSPRINGS, A CONDOMINIUM
 FOR
GREENSPRINGS DEVELOPMENT, L.C.
 BERKELEY DISTRICT JAMES CITY COUNTY, VIRGINIA

Hassell & Folkes, P.C. Engineers Surveyors Planners Chesapeake, VA 23320 (757)547-9631	SIZE: C CONTRACT NO: 95-079	DIST/BOX: 6AE/16 REF: 18/13	FILENAME: FAIRWY34.DWG FWAYPLAT.DWG	REV.
SCALE: 1" = 80'	DATE: 11/21/01	SHEET 2 of 6		