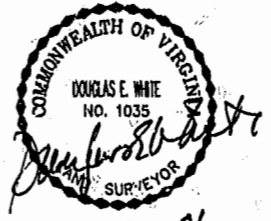


#010022614

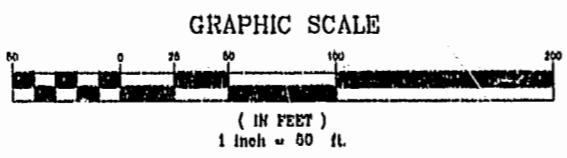
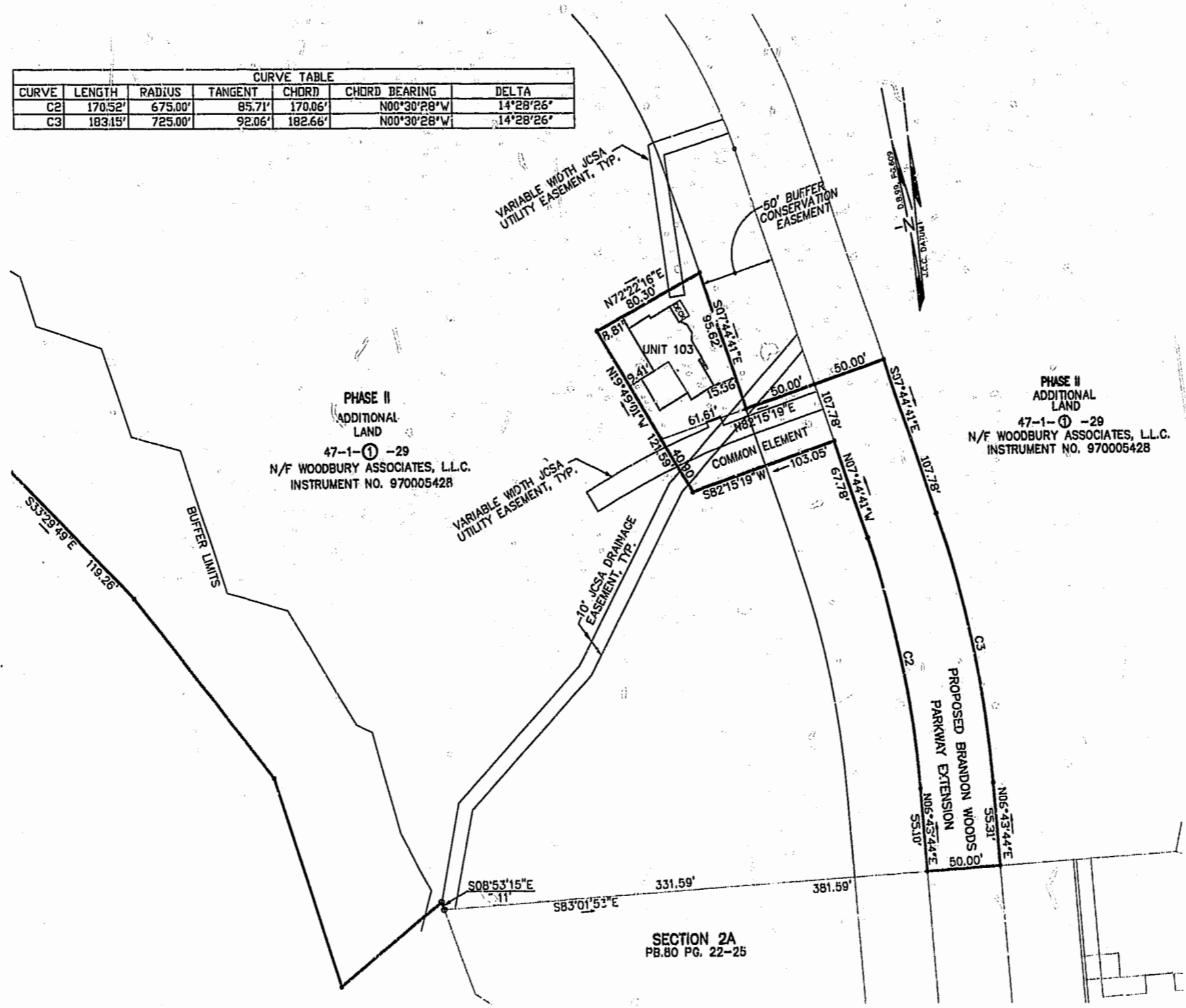
84 PAGE 21

CONDOMINIUM PLAT  
OF  
SECTION 4A  
(A PORTION OF PHASE II)  
BRANDON WOODS  
JAMES CITY COUNTY, VIRGINIA  
SCALE: 1"=50' DATE: 12/5/01  
SHEET 2 OF 3

CURVE TABLE							
CURVE	LENGTH	RADIUS	TANGENT	CHORD	CHORD BEARING	DELTA	
C2	170.52'	675.00'	85.71'	170.06'	N00°30'28"W	14°28'26"	
C3	183.15'	725.00'	92.06'	182.66'	N00°30'28"W	14°28'26"	



12-05-01



City of Williamsburg & County of James City  
Circuit Court: This PLAT was recorded on  
7 Dec  
at 9:15 AM/NOV. PB. 84 PG. 20-22  
DOCUMENT # 010022614  
BETSY B. WOOLRIDGE, CLERK  
Betsy B. Woolridge, Dep. Clerk

**LANDMARK DESIGN GROUP**  
Engineers • Planners • Surveyors  
Landscape Architects • Environmental Consultants  
4029 IRONBOUND ROAD SUITE 100  
WILLIAMSBURG, VA 23188  
TEL (757) 253-2975 FAX(757) 229-0049