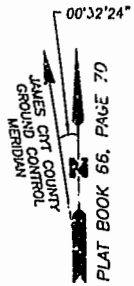


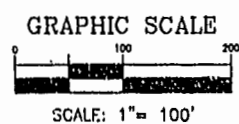
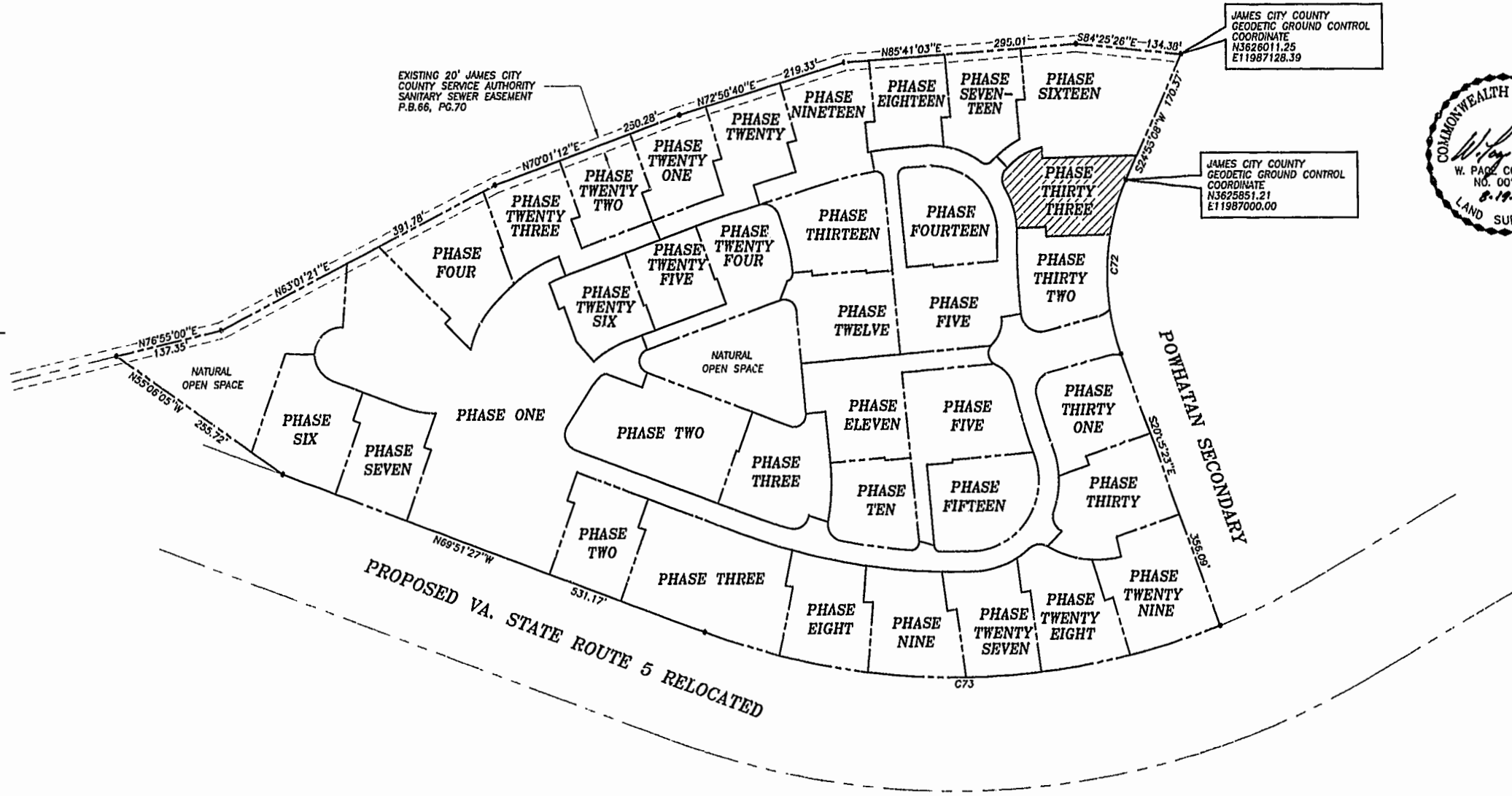
PLAT OF SUBDIVISION
WATERFORD
AT
POWHATAN SECONDARY
PHASE THIRTY-THREE
BERKELEY DISTRICT
JAMES CITY COUNTY, VIRGINIA

DATE: 10/21/98 SHEET 2 OF 3 SCALE: 1"=100'
PROJECT NO: 97-008 DRAWN BY: SJB

SA SLEDD & ASSOCIATES, P.C.
ENGINEERS PLANNERS SURVEYORS
11832 ROCK LANDING DRIVE, SUITE 203
NEWPORT NEWS, VIRGINIA 23606
(757) 873-3386



NOW OR FORMERLY
POWHATAN ENTERPRISES, INC.



CURVE DATA

NUMBER	DELTA	RADIUS	LENGTH	TANGENT	CHORD	CHORD BEARING
C72	45°00'31"	280.00'	219.95'	116.00'	214.34'	S02°24'52"W
C73	41°26'14"	924.91'	668.91'	349.84'	654.43'	S89°25'26"W

City of Williamsburg & County of James City
Circuit Court, This PLAT was recorded on
November 15, 1998
at 1:55 AM/PM, PG. 83 of 91
DOCUMENT # 010020997
BETSY B. WOOLRIDGE, CLERK

Betsy Woolridge Dep. Clerk

REVISED: 08/19/99
WATERFORD PH.33 97-008