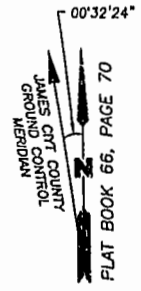


PLAT OF SUBDIVISION
WATERFORD
AT
POWHATAN SECONDARY
PHASE TWENTY-NINE
BERKELEY DISTRICT
JAMES CITY COUNTY, VIRGINIA

DATE: 10/21/98 SHEET 2 OF 3 SCALE: 1"=100'
PROJECT NO: 97-008 DRAWN BY: SJB

SA SLEDD & ASSOCIATES, P.C.
ENGINEERS PLANNERS SURVEYORS
11832 ROCK LANDING DRIVE, SUITE 203
NEWPORT NEWS, VIRGINIA 23606
(757) 873-3386

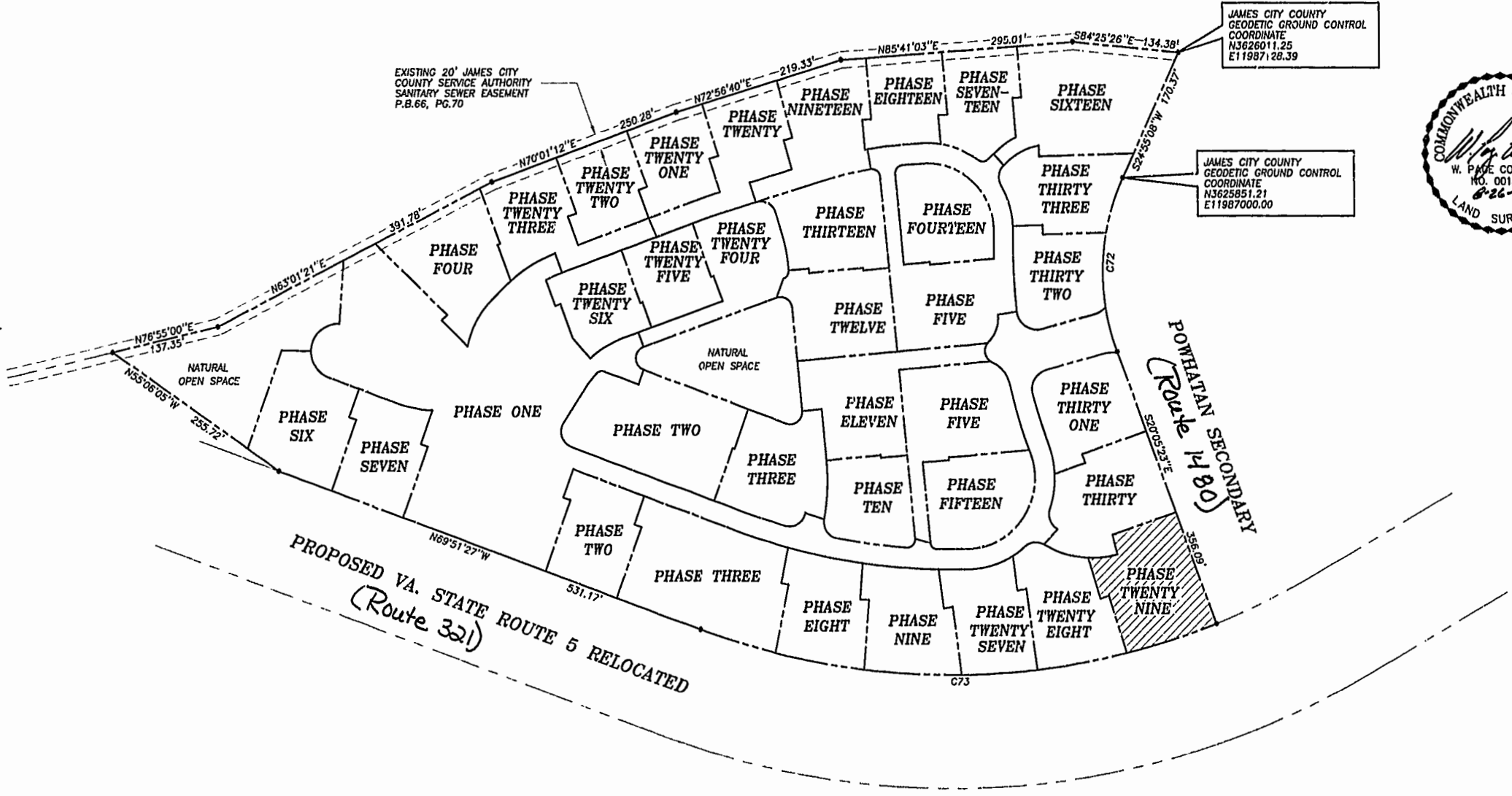


NOW OR FORMERLY
POWHATAN ENTERPRISES, INC.

EXISTING 20" JAMES CITY
COUNTY SERVICE AUTHORITY
SANITARY SEWER EASEMENT
P.B.66, PG.70

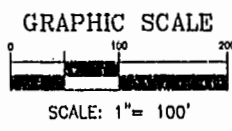
JAMES CITY COUNTY
GEODETIC GROUND CONTROL
COORDINATE
N3626011.25
E11987128.39

JAMES CITY COUNTY
GEODETIC GROUND CONTROL
COORDINATE
N3625851.21
E11987000.00



CURVE DATA

NUMBER	DELTA	RADIUS	LENGTH	TANGENT	CHORD	CHORD BEARING
C72	45°00'31"	280.00'	219.95'	116.00'	214.34'	S02°24'52"W
C73	41°26'14"	924.91'	668.91'	349.84'	654.43'	S89°25'26"W



City of Williamsburg & County of James City
Circuit Court: This PLAT was recorded on
November 15, 2001
at 1:51 AM PM, PG 86 of 88
DOCUMENT # 010020996
BETSY B. WOOLRIDGE, CLERK
Betsy Woolridge, Dep. Clerk