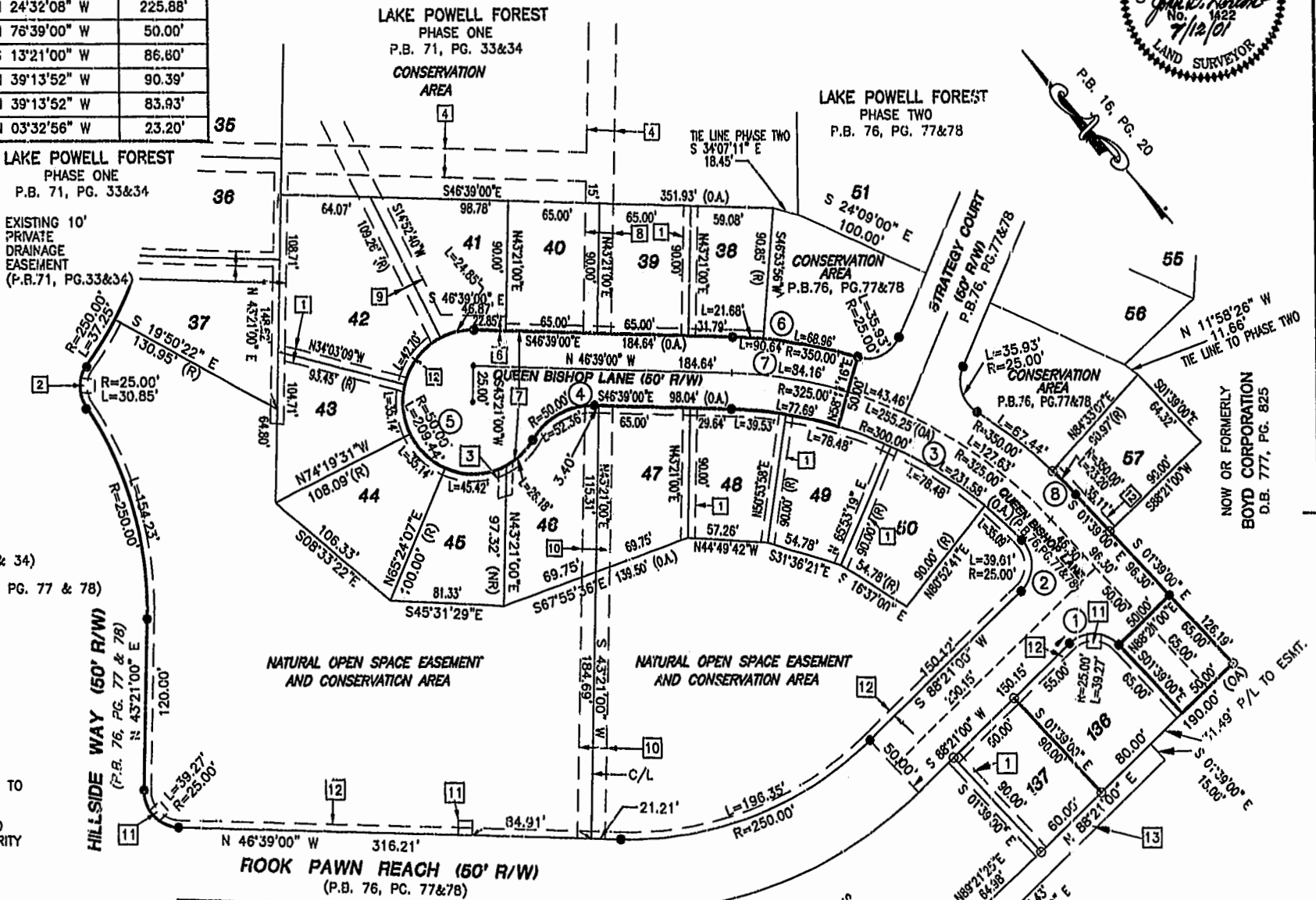




CURVE DATA						
NO.	RADIUS	LENGTH	DELTA	TANGENT	CHORD BEARING	CHORD
1	25.00'	39.27'	93°00'00"	25.00'	N 46°39'00" W	35.36'
2	25.00'	39.61'	93°46'16"	25.34'	N 42°57'52" E	35.59'
3	300.00'	231.58'	44°13'44"	121.91'	N 24°32'08" W	225.88'
4	50.00'	52.36'	60°00'00"	28.87'	N 76°39'00" W	50.00'
5	50.00'	209.44'	240°00'00"	-----	S 13°21'00" W	86.80'
6	350.00'	90.64'	14°50'16"	45.57'	N 39°13'52" W	90.39'
7=C	325.00'	84.16'	14°50'16"	42.32'	N 39°13'52" W	83.93'
8	350.00'	23.20'	03°47'53"	11.60'	N 03°32'56" W	23.20'

LOT	AREA TABLE
38	5,070 sq.ft. 0.1164 acres
39	5,850 sq.ft. 0.1343 acres
40	5,850 sq.ft. 0.1343 acres
41	6,750 sq.ft. 0.1550 acres
42	11,028 sq.ft. 0.2532 acres
43	6,451 sq.ft. 0.1481 acres
44	6,786 sq.ft. 0.1558 acres
45	5,779 sq.ft. 0.1327 acres
46	7,349 sq.ft. 0.1687 acres
47	6,673 sq.ft. 0.1532 acres
48	5,727 sq.ft. 0.1315 acres
49	6,069 sq.ft. 0.1393 acres
50	6,070 sq.ft. 0.1393 acres
57	5,525 sq.ft. 0.1268 acres
136	7,066 sq.ft. 0.1622 acres
137	5,400 sq.ft. 0.1240 acres

- EASEMENT NOTATIONS**
- [1] 10' PRIVATE DRAINAGE EASEMENT
 - [2] EXISTING 10' X 10' VIRGINIA POWER EASEMENT (P.B. 71, PG. 33 & 34)
 - [3] 10' X 20' VIRGINIA POWER EASEMENT
 - [4] EXISTING 20' DRAINAGE EASEMENT (P.B. 71, PG. 33 & 34)
 - [6] EXISTING 10' & VARIABLE UTILITY EASEMENT (P.B. 76, PG. 77 & 78)
 - [7] EXISTING 50' & VARIABLE WIDTH UTILITY EASEMENT (P.B. 76, PG. 77 & 78)
 - [8] EXISTING 20' DRAINAGE EASEMENT (P.B. 76, PG. 77 & 78)
 - [9] EXISTING 15' UTILITY EASEMENT (P.B. 76, PG. 77 & 78)
 - [10] 20' DRAINAGE EASEMENT HEREBY DEDICATED TO HOMEOWNERS ASSOCIATION
 - [11] 10' X 10' VIRGINIA POWER EASEMENT
 - [12] 5' UTILITY EASEMENT HEREBY DEDICATED EXCLUSIVELY TO JAMES CITY COUNTY SERVICE AUTHORITY
 - [13] 15' & VARIABLE UTILITY EASEMENT HEREBY DEDICATED EXCLUSIVELY TO JAMES CITY COUNTY SERVICE AUTHORITY



City of Williamsburg & County of James City
 Circuit Court: This PLAT was recorded on
 5 Nov 2001
 at 9:24 AM/PM, P.B. 83, PG. 79 & 80
 DOCUMENT # 01002.0270
 BETSY B. WOOLRIDGE, CLERK
 Betsy B. Woolridge, Dep. Clerk

EXISTING
 LIFT STATION
 JCSA SAN. DIST. #3
 D.B. 205, PG. 665

BOYD CORPORATION
 D.B. 777, PG. 825

SUBDIVISION
 OF
LAKE POWELL FOREST
 PHASE THREE
 JAMESTOWN MAGISTERIAL DISTRICT
 JAMES CITY COUNTY, VIRGINIA
 SCALE: 1" = 60' JULY 12, 2001

HORTON & DODD, P.C.
 SURVEYORS, ENGINEERS & PLANNERS
 300 GEORGE WASHINGTON HIGHWAY N.
 CHESAPEAKE VIRGINIA 23323
 (757) 487-4535

