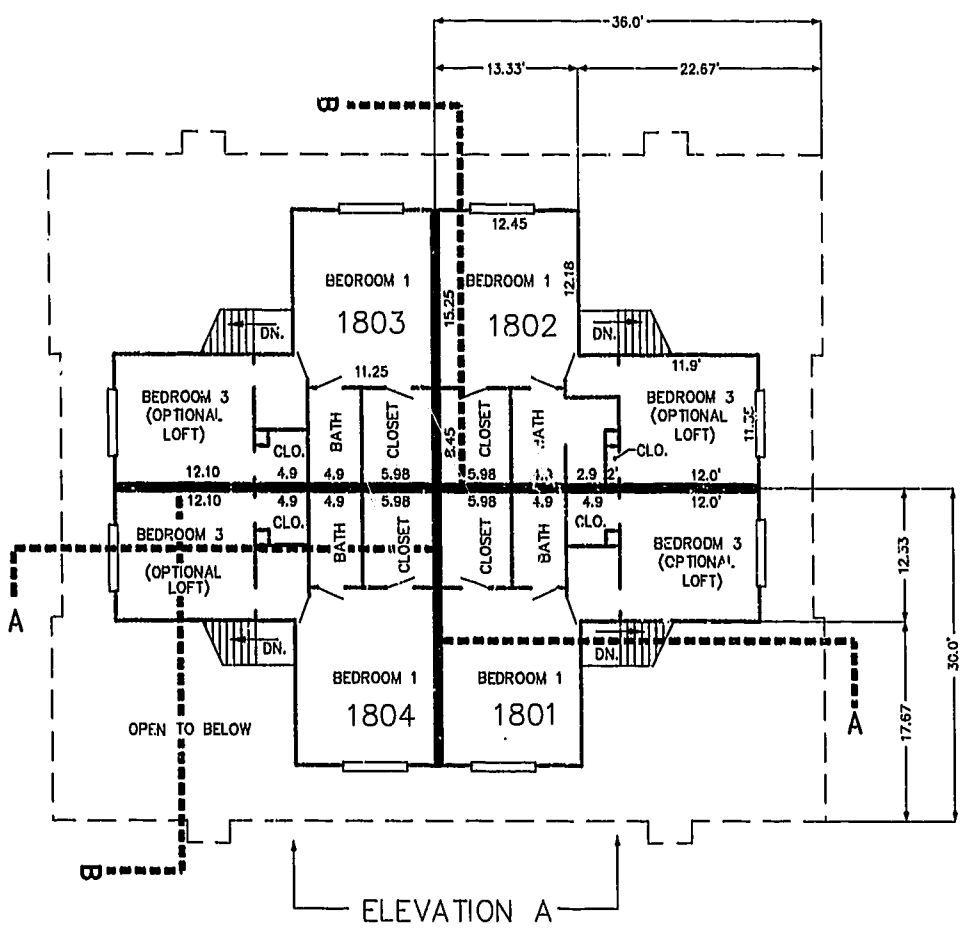
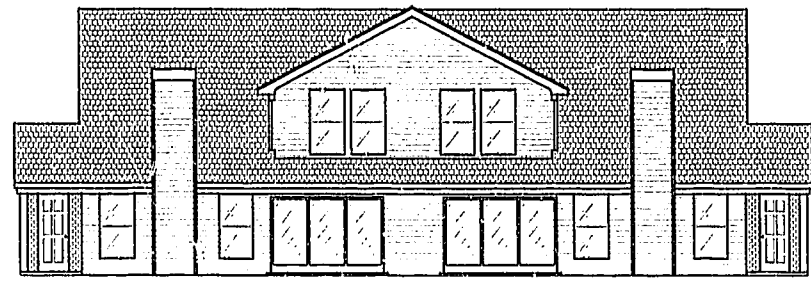


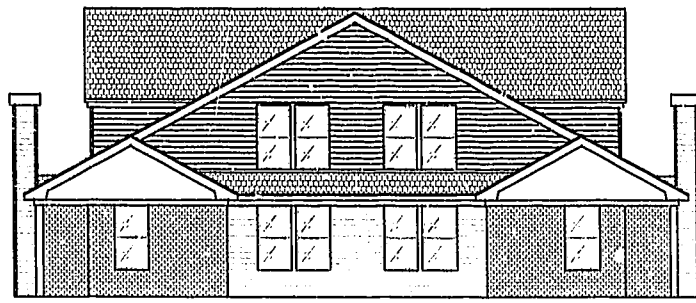
FIRST FLOOR PLAN
(UNIT #1802 IS TYPICAL)



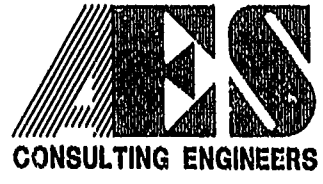
SECOND FLOOR PLAN
(UNIT #1802 IS TYPICAL)



ELEVATION A

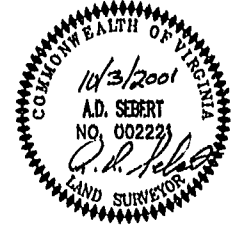


ELEVATION B



5248 Olde Towne Road, Suite 1
Williamsburg, Virginia 23188
(757) 253-0040
Fax (757) 220-8994

PLAT OF CONDOMINIUM
WESTGATE AT WILLIAMSBURG,
A CONDOMINIUM
PHASE NINETEEN
OWNED BY: 752 L.L.C.,
A VIRGINIA LIMITED LIABILITY COMPANY
CITY OF WILLIAMSBURG VIRGINIA



City of Williamsburg & County of James City Circuit Court: This PLAT was recorded on <i>October 19, 2001</i> at <i>1:57</i> AM/PM P.M. PG <i>(44/62)</i>	
DOCUMENT # <i>011597</i>	
BETSY B. WOOLRIDGE, CLERK	
<i>Betsy Woolridge</i> , Dep. Clerk	
No. DATE	REVISION / COMMENT / NOTE
	BY

Designed GTV/ADS	Drawn JFS
Scale 1" = 10'	Date 10/03/01
Project No. 8395-6	
Drawing No. 5 OF 6	