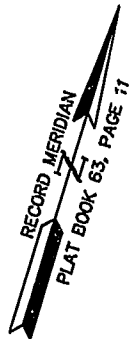
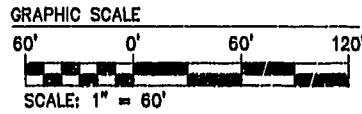


NOTE:  
AT THE TIME OF THIS SURVEY  
ROADS AND SIDEWALK ARE UNDER  
CONSTRUCTION. (PROPOSED  
LOCATION SHOWN). WATER &  
& SANITARY SYSTEM ARE IN PLACE.

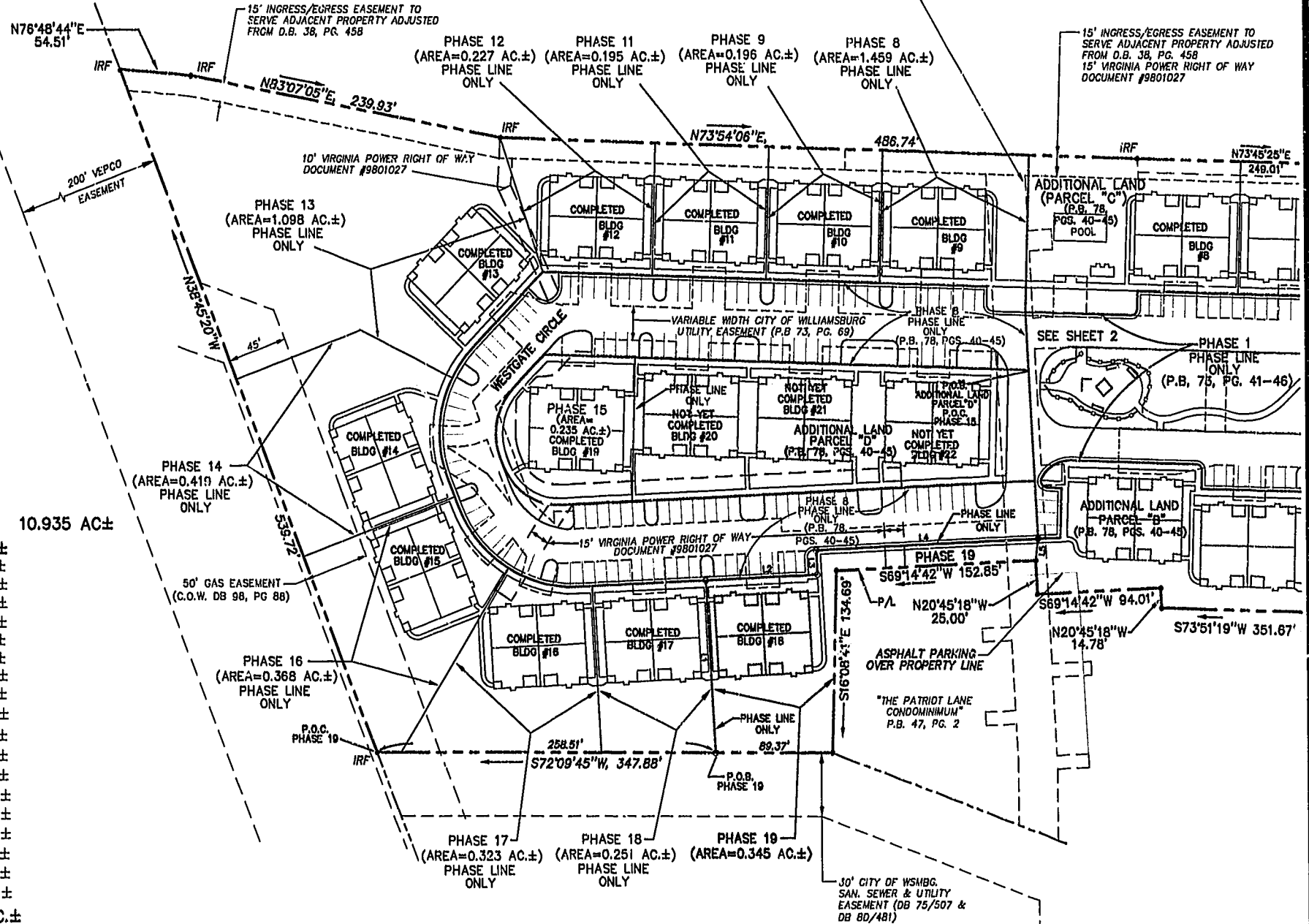


N/F  
JAMESTOWN ACADEMY  
TAX PARCEL 281-03-A

N OR F  
WARBURTON & MAHONE ESTATE  
TAX PARCEL 282-A-001

VARIABLE WIDTH CITY OF WILLIAMSBURG  
SAN. SEWER & UTILITY  
EASEMENT (DB 75/507 &  
DB 80/481)

15' INGRESS/EGRESS EASEMENT TO  
SERVE ADJACENT PROPERTY ADJUSTED  
FROM D.B. 38, PG. 458  
15' VIRGINIA POWER RIGHT OF WAY  
DOCUMENT #9801027



**AREA**  
TOTAL AREA PARCEL 1= 10.935 AC±

- PHASE NINETEEN= 0.345 AC.±
- PHASE EIGHTEEN= 0.251 AC.±
- PHASE SEVENTEEN= 0.323 AC.±
- PHASE SIXTEEN= 0.368 AC.±
- PHASE FIFTEEN= 0.235 AC.±
- PHASE FOURTEEN= 0.419 AC.±
- PHASE THIRTEEN= 1.098 AC.±
- PHASE TWELVE= 0.227 AC.±
- PHASE ELEVEN= 0.195 AC.±
- PHASE TEN= 0.222 AC.±
- PHASE NINE= 0.196 AC.±
- PHASE EIGHT= 1.459 AC.±
- PHASE SEVEN= 0.216 AC.±
- PHASE SIX= 0.343 AC.±
- PHASE FIVE= 0.235 AC.±
- PHASE FOUR= 0.200 AC.±
- PHASE THREE= 0.196 AC.±
- PHASE TWO= 0.195 AC.±
- PHASE ONE= 2.377 AC.±

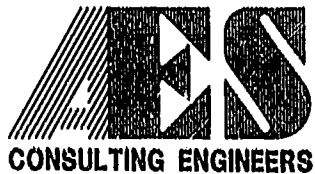
ADDITIONAL AREA (PARCEL "B")= 0.781 AC.±  
ADDITIONAL AREA (PARCEL "C")= 0.396 AC.±  
ADDITIONAL AREA (PARCEL "D")= 0.658 AC.±

TOTAL= 10.935 AC±

LINE TABLE PHASE 19

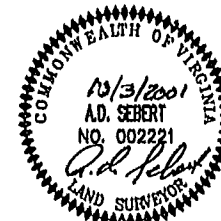
NUMBER	BEARING	DISTANCE
L1	N20°45'18"W	127.69'
L2	N89°14'42"E	85.50'
L3	N20°45'18"W	18.00'
L4	N89°14'42"E	170.09'
L5	S11°18'18"E	16.21'

"THE PATRIOT  
CONDOMINIUM"  
TAX PARCEL 281-01-02-A  
P.B. 35, PG. 119



5248 Olde Towne Road, Suite 1  
Williamsburg, Virginia 23188  
(757) 253-0040  
Fax (757) 220-8994

PLAT OF CONDOMINIUM  
WESTGATE AT WILLIAMSBURG,  
A CONDOMINIUM  
PHASE NINETEEN  
OWNED BY: 752 L.L.C.,  
A VIRGINIA LIMITED LIABILITY COMPANY  
CITY OF WILLIAMSBURG VIRGINIA



City of Williamsburg & County of James City Circuit Court: This PLAT was recorded on October 19, 2001 at 1:59 PM DB 83, PG 107 DOCUMENT # 011597 BETSY B. WOOLRIDGE, CLERK	
No. DATE	REVISION / COMMENT / NOTE
BY	

Designed GTW/ADS	Drawn JFS
Scale 1" = 60'	Date 10/03/01
Project No. 8395-6	
Drawing No. 3 OF 6	