

# "GREENSPRINGS PLANTATION"

46-1-01-0-0001  
(DB 322, PG 254)



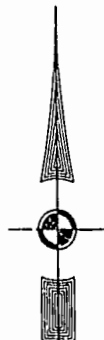
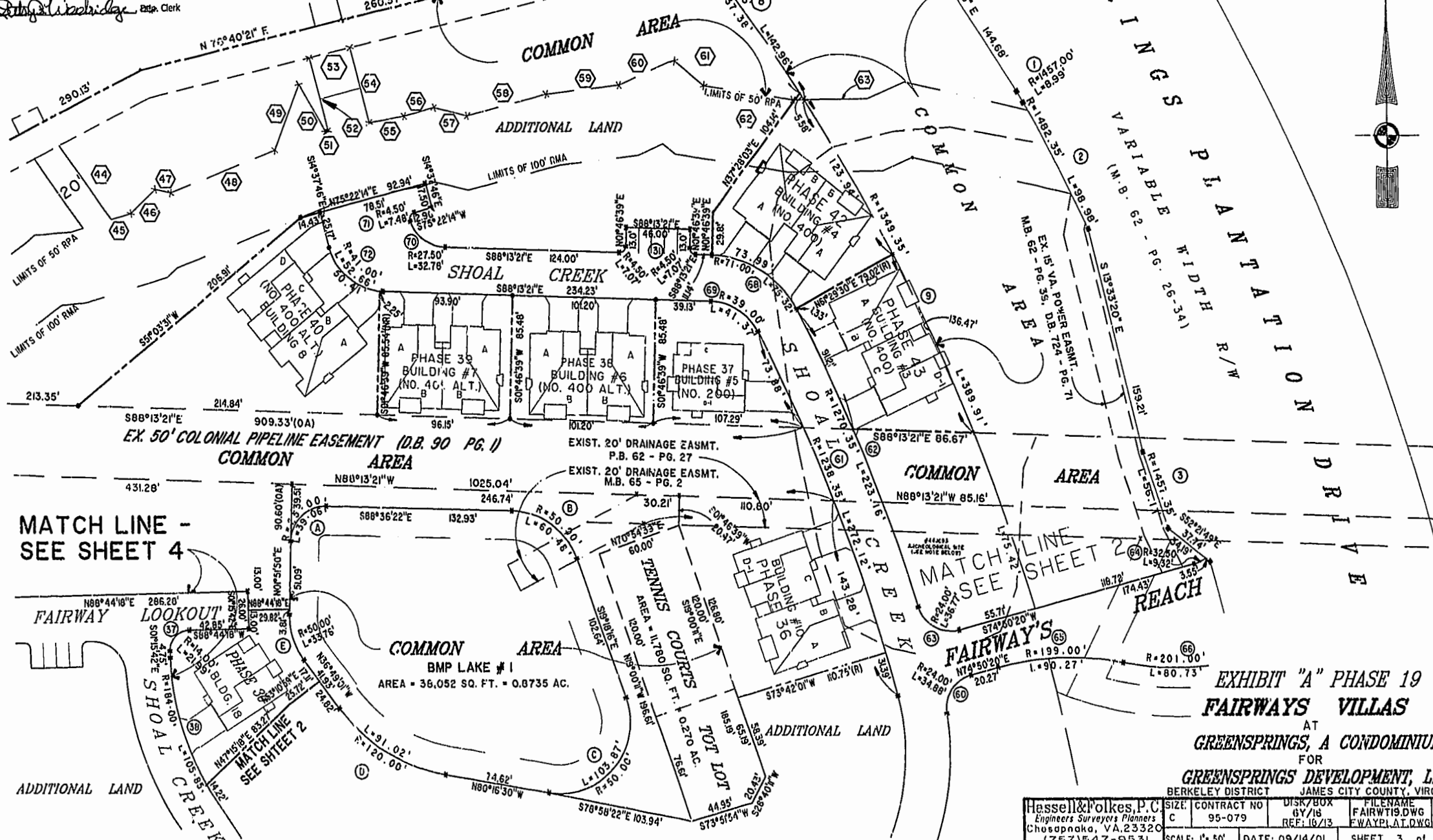
City of Williamsburg & County of James City  
Circuit Court, This PLAT was recorded on  
21 Sept. 2001  
at 3:58 PM, P.B. # 2, PG 36-41  
DOCUMENT # 010017054  
BETSY B. WOOLRIDGE, CLERK

*Betsy B. Woolridge*, Esq. Clerk

EXIST. 20' JAMES CITY COUNTY SERVICE  
AUTHORITY SAN. SEWER EASEMENT AS  
SHOWN IN AS-BUILT LOCATION, D.B. 141 - PG. 388

EXIST. 20' DRAINAGE EASEMENT  
M.B. 65 - PG. 2

## MATCH LINE - SEE SHEET 5



## MATCH LINE - SEE SHEET 4

## MATCH LINE - SEE SHEET 2

### EXHIBIT "A" PHASE 19 FAIRWAYS VILLAS AT GREENSPRINGS, A CONDOMINIUM FOR

#### GREENSPRINGS DEVELOPMENT, L.C. BERKELEY DISTRICT JAMES CITY COUNTY, VIRGINIA

Hassell & Folkes, P.C. Engineers Surveyors Planners Chesapeake, VA 23320 (757) 547-9531	SIZE: CONTRACT NO C 95-079	DISK/BOX 6Y/16 REF: 16/13	FILENAME FAIRWT19.DWG FWAYPLAT.DWG	REV.
SCALE: 1" = 50'	DATE: 09/14/01	SHEET 3 of 6		