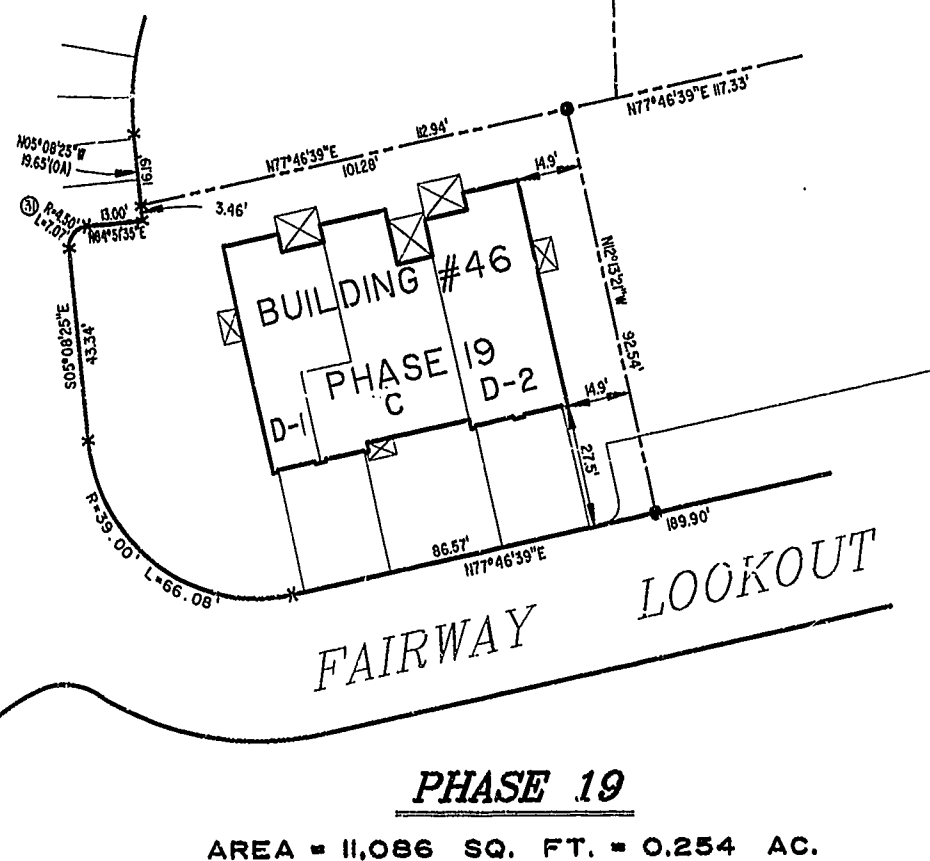


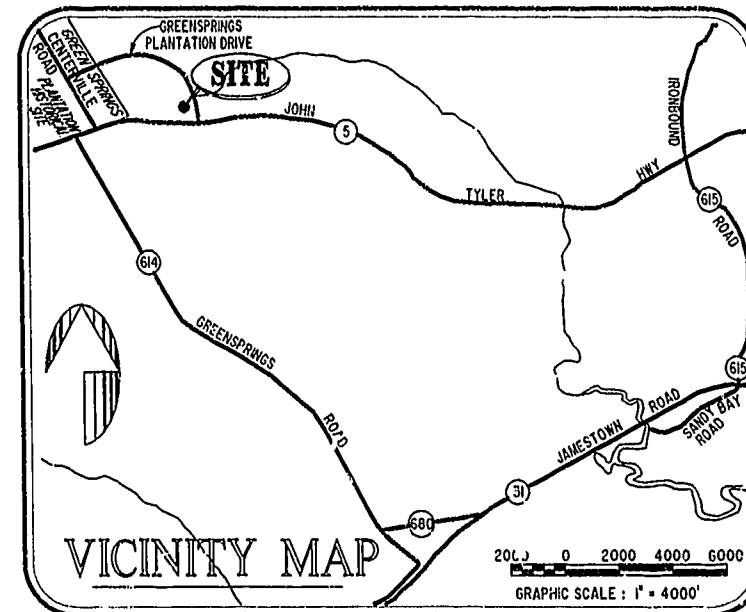
BUILDING NUMBER	UNIT NUMBER	UNIT TYPE	STREET ADDRESS
46	46-435	D2	435 FAIRWAY LOOKOUT
46	46-445	C	445 FAIRWAY LOOKOUT
46	46-455	D1	455 FAIRWAY LOOKOUT

NOTES:

1. THE TOTAL AREA OF SITE IS 1,222,568 SQ.FT. (28.07 AC.) OF WHICH 170,233 SQ.FT. (3.908 AC.) IS ADDITIONAL LAND.
2. THE AREA OF THE SUBMITTED LAND IS 1,052,335 SQ.FT. (24.158 AC.)
3. THE COMMON AREA IS TO BE THE RESPONSIBILITY OF THE CONDOMINIUM ASSOCIATION AND HAS A TOTAL AREA OF 16.43 AC.



PHASE 19
 AREA = 11,086 SQ. FT. = 0.254 AC.



I CHRISTOPHER D. CAPOZZI, A CERTIFIED LAND SURVEYOR, DO HEREBY CERTIFY THAT THIS PLAT IS ACCURATE, AND THAT IT COMPLIES WITH THE PROVISIONS OF SECTION 55 - 79.58A OF THE CODE OF VIRGINIA. I FURTHER HEREBY CERTIFY THAT ALL UNITS OR PORTIONS THEREOF DEPICTED HEREON HAVE BEEN SUBSTANTIALLY COMPLETED.

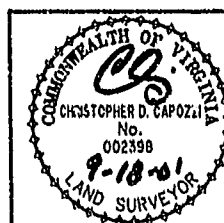
THE UNDERSIGNED CERTIFIED LAND SURVEYOR CERTIFIES THAT HE HAS READ SECTION 55 - 79.58B OF THE CODE OF VIRGINIA, AND FINDS THIS PLAT TO BE ACCURATE AND IN COMPLIANCE WITH THE CODE. I FURTHER CERTIFY THAT ALL UNITS OR PORTIONS THEREOF DEPICTED HEREON HAVE BEEN SUBSTANTIALLY COMPLETED.

9-18-01
 DATE

LAND SURVEYOR No. 002398

City of Williamsburg & County of James City
 Circuit Court: This PLAT was recorded on
 21 Oct 2001
 at 3:52 PM/PM. PB 83 PG 34-41
 DOCUMENT # 010017054
 BETSY B. WOOLRIDGE, CLERK

Betsy B. Woolridge, Clerk



Hassell & Folkes, P.C.
 Engineers Surveyors Planners
 325 Volvo Parkway
 Chesapeake, VA 23320
 (757) 547-9531

DRAWN BY: HJS
 COMP BY: HF
 CHECKED BY: HBA
 DATE: 09/14/01

EXHIBIT "A" PHASE 19
FAIRWAYS VILLAS
 AT
GREENSPRINGS, A CONDOMINIUM
 FOR
GREENSPRINGS DEVELOPMENT, L.C.
 BERKELEY DISTRICT JAMES CITY COUNTY, VIRGINIA
 SIZE: C 95-079
 DISK/BOX: 61/16
 REF: 10/13
 FILENAME: FAIRWT19.DWG
 REV: FWAYPLAT.DWG
 SCALE: 1" = 25'
 DATE: 09/14/01
 SHEET 1 of 6