

EXHIBIT B-8
 SUPPLEMENTAL CONDOMINIUM PLAT
 OF
 WYNDHAM PLANTATION
 CONDOMINIUM

WILLIAMSBURG, VIRGINIA
 SCALE: 1"=100' JULY 10, 2001
 JOHN E. SIRINE AND ASSOCIATES, LTD.
 SURVEYORS ENGINEERS PLANNERS
 VIRGINIA BEACH, VIRGINIA
 (757) 486-4910

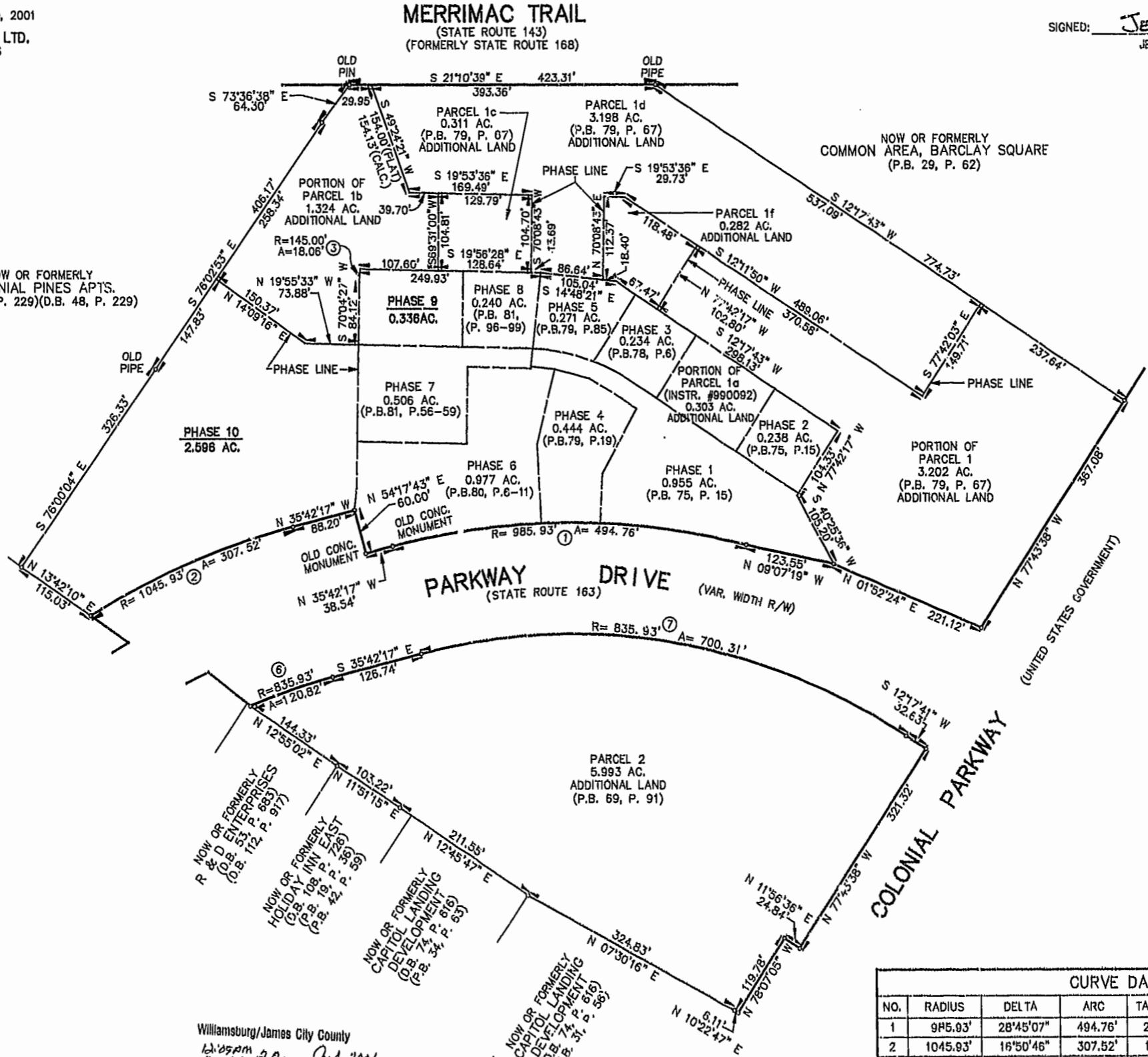
THE UNDERSIGNED CERTIFIES THAT THESE PLATS ARE ACCURATE AND COMPLY WITH THE PROVISIONS OF CODE OF VIRGINIA, SECTION 55-79.5B.A AND THAT ALL UNITS OR PORTIONS THEREOF DEPICTED HEREON AND ALL COMMON ELEMENTS HAVE BEEN SUBSTANTIALLY COMPLETED.

SIGNED: Jeffrey D. Williams
 JEFFREY D. WILLIAMS, L.S.

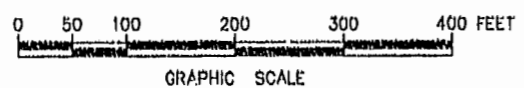


NOW OR FORMERLY
 COLONIAL PINES APTS.
 (D.B. 44, P. 229)(D.B. 48, P. 229)

NOW OR FORMERLY
 COMMON AREA, BARCLAY SQUARE
 (P.B. 29, P. 62)



CURVE DATA						
NO.	RADIUS	DELTA	ARC	TANGENT	CHORD	CHORD BEARING
1	985.93'	28°45'07"	494.76'	252.70'	489.58'	N 21°19'43" W
2	1045.93'	16°50'46"	307.52'	154.88'	308.42'	N 44°07'40" W
3	145.00'	07°08'08"	18.06'	9.04'	18.15'	S 73°38'31" W
6	835.93'	08°16'51"	120.82'	60.51'	120.71'	S 39°50'42" E
7	835.93'	48°00'00"	700.31'	372.18'	680.01'	S 11°42'18" E



Williamsburg/James City County
 Received 20 day of July 2001
 DOCUMENT # 011063
 Betsy B. Woolledge, Clerk

PLAT RECORDED IN
 P.M. NO. 22, PAGE 72-76