

PLAT OF SUBDIVISION
WATERFORD
 AT
POWHATAN SECONDARY

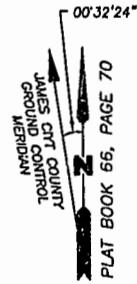
PHASE EIGHTEEN
 BERKELEY DISTRICT
 JAMES CITY COUNTY, VIRGINIA

DATE: 10/21/98 SHEET 2 OF 3 SCALE: 1"=100'

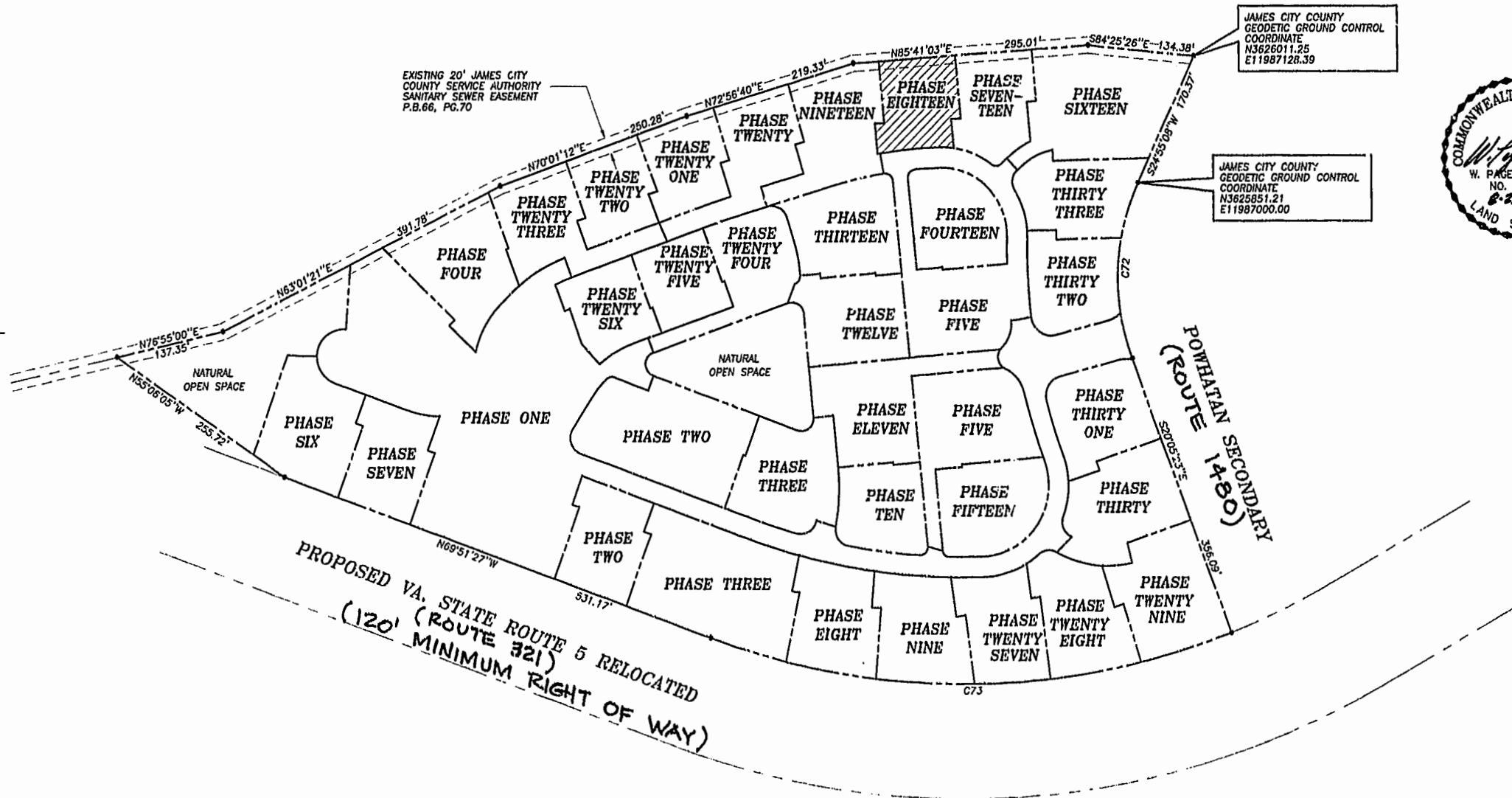
PROJECT NO: 97-008 DRAWN BY: SJB



SLIEDD & ASSOCIATES, P.C.
 ENGINEERS PLANNERS SURVEYORS
 11832 ROCK LANDING DRIVE, SUITE 203
 NEWPORT NEWS, VIRGINIA 23606
 (757) 873-3386



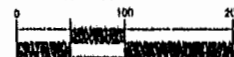
NOW OR FORMERLY
 POWHATAN ENTERPRISES, INC.



CURVE DATA

NUMBER	DELTA	RADIUS	LENGTH	TANGENT	CHORD	CHORD BEARING
C72	45°00'31"	280.00'	219.95'	116.00'	214.34'	S02°24'52"W
C73	41°26'14"	924.91'	668.91'	349.84'	654.43'	S89°25'26"W

GRAPHIC SCALE



SCALE: 1" = 100'

Williamsburg, James City County
 Recorded 18 day of Nov, 2001
 DOCUMENT # 210,012,401
 By: Dawn R. Miller, Clerk
 BETSY B. WOOLRIDGE, CLERK