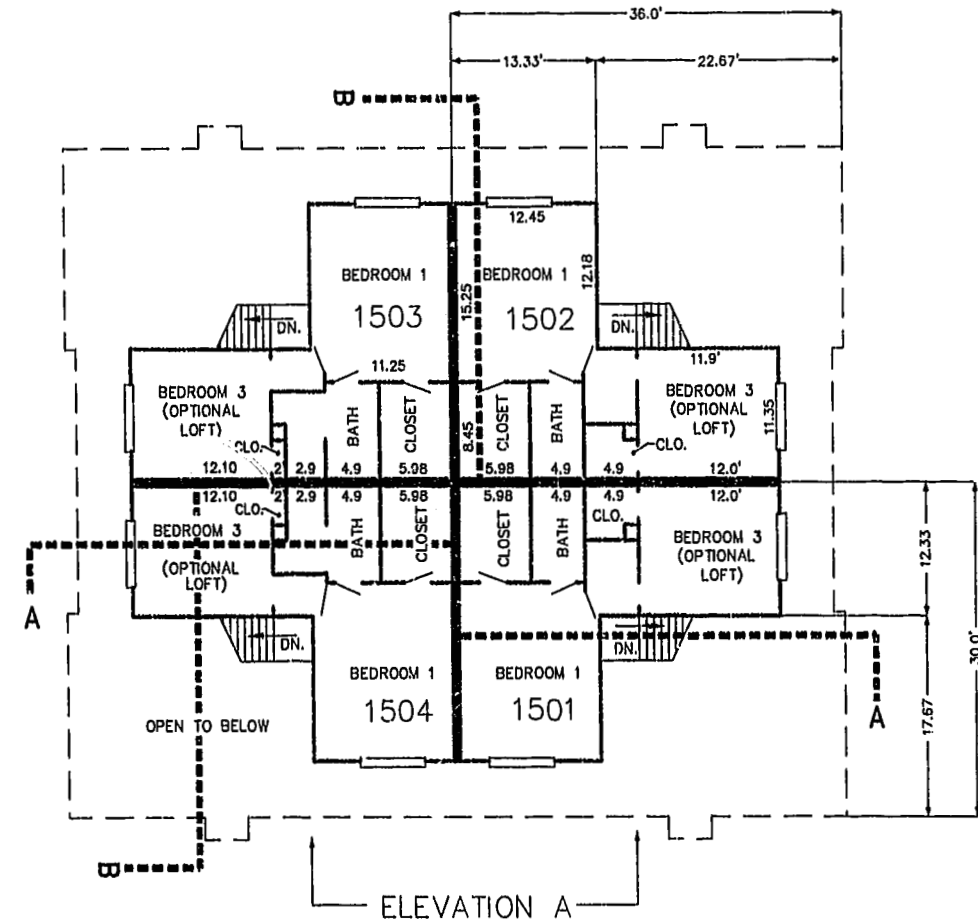


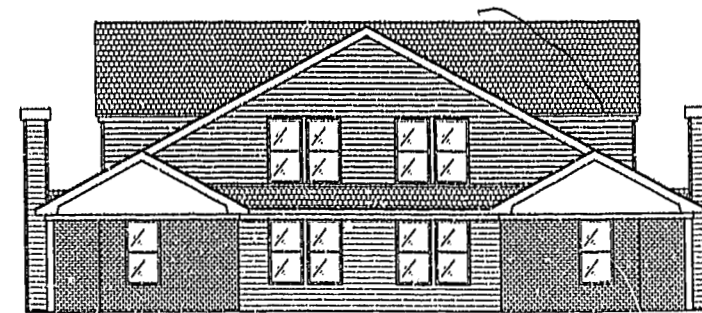
FIRST FLOOR PLAN
(UNIT #1502 IS TYPICAL)



SECOND FLOOR PLAN
(UNIT #1502 IS TYPICAL)



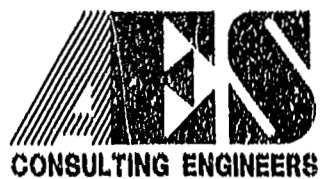
ELEVATION A



ELEVATION B

PLAT RECORDED IN
F.L. NO. 82 PAGE 57-62

R6.21.01-05.49 8395p165.dwg JFS



5248 Olde Towne Road, Suite 1
Williamsburg, Virginia 23188
(757) 253-0040
Fax (757) 220-8994

PLAT OF CONDOMINIUM
WESTGATE AT WILLIAMSBURG,
A CONDOMINIUM
PHASE SIXTEEN
OWNED BY: 752 L.L.C.,
A VIRGINIA LIMITED LIABILITY COMPANY
CITY OF WILLIAMSBURG VIRGINIA



Williamsburg/James City County noted on 13 day of June 2001 DOCUMENT # 0110220 By: Dawn R. Martin, Clerk BETSY B. WOOLRIDGE, CLERK	
No.	DATE
REVISION / COMMENT / NOTE	
BY	

Designed GTW/ADS	Drawn JFS
Scale 1" = 10'	Date 8/19/01
Project No. 8395--6	
Drawing No. 5 OF 6	