

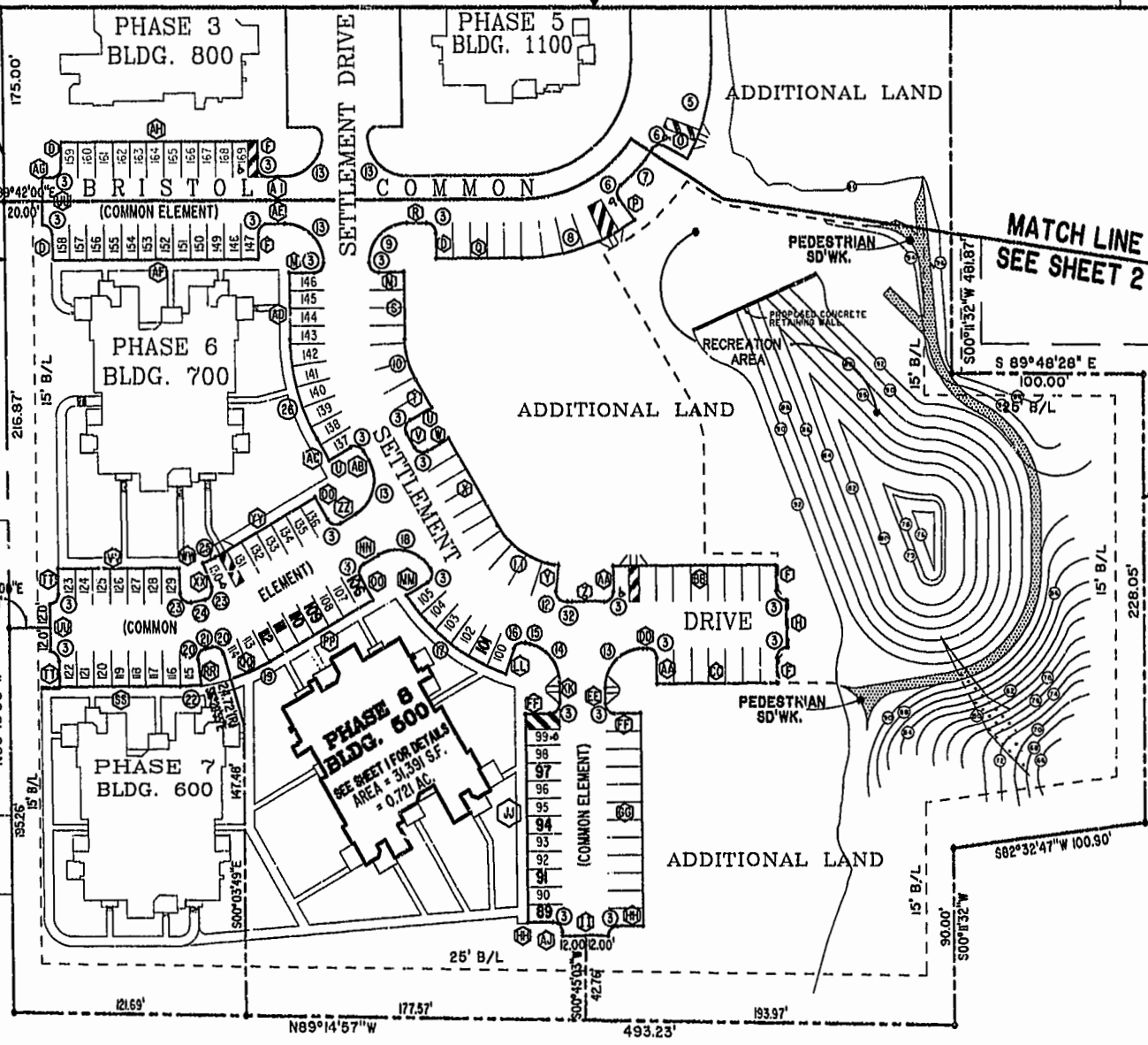
T.P. 372-(0A)-00-030
 NOW OR FORMERLY
JEROME & EVELYN RANDOLPH
 (D.B. 37, PG. 379)
 ZONE: RM-2

MATCH LINE
 SEE SHEET 2
 40' R/W
ROLAND STREET

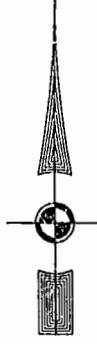
T.P. 372-(0A)-00-004
 NOW OR FORMERLY
CECIL AND ALICE M. CROPPER
 (D.B. 48, PG. 546)
 ZONE: RM-2

T.P. 372-(0A)-00-003
 NOW OR FORMERLY
LEONARD & BEATRICE LEGUM
 (D.B. 55, PG. 114)
 ZONE: RM-2

T.P. 402-01-00A
 NOW OR FORMERLY
LULA LORAIN OLIVER
 (D.B. 83, PG. 360)
 ZONE: RM-2



82' x 52'



15' LOADING DOCK SETBACK
 D.B. 59 - PG. 2-3
 P.B. 42 - PG. 25

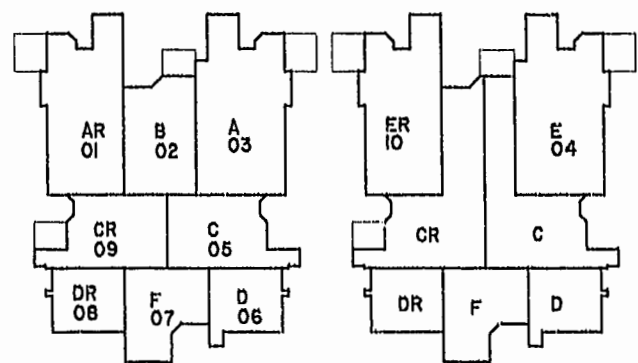
T.P. 372-(05)-00-001
 NOW OR FORMERLY
CHESAPEAKE MEDIA, INC.
 (D.B. 74, PG. 121)
 (M.B. 42, PG. 25)
 ZONE: B-2 CONDITIONAL

T.P. 372-(04)-00-00-A2
 NOW OR FORMERLY
CITY OF WILLIAMSBURG
 (D.B. 121, PG. 321)
 (M.B. 36, PG. 77)

PLAT RECORDED IN
 P.B. NO. 22 PAGE 32

Williamsburg/James City County
 Recorded 11 day of July 2001
 DOCUMENT # 211014 1:28 pm
Betsy B. Woolridge Clerk
BETSY B. WOOLRIDGE, CLERK

(FIRST FLOOR) (SECOND FLOOR)



TYPICAL CONDOMINIUM LAYOUT



BRISTOL COMMONS
 A CONDOMINIUM COMMUNITY
 PHASE EIGHT
 FOR
KEY GROUP, LLC
 VIRGINIA

Hassell & Folkes, P.C. Engineers Surveyors Planners Chesapeake, VA 23320 (757)547-9531	SIZE C	CONTRACT NO. 98062	DISK/BOX 1231/15	FILENAME BRISTOL8.DWG	REV.
SCALE: 1" = 50'		DATE: 06/13/01		SHEET 3 of 4	