

Williamsburg/James City County

"GREENSPRINGS PLANTATION"

46-1-01-0-0001
(DB 322, PG 254)

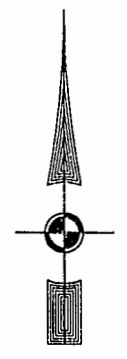
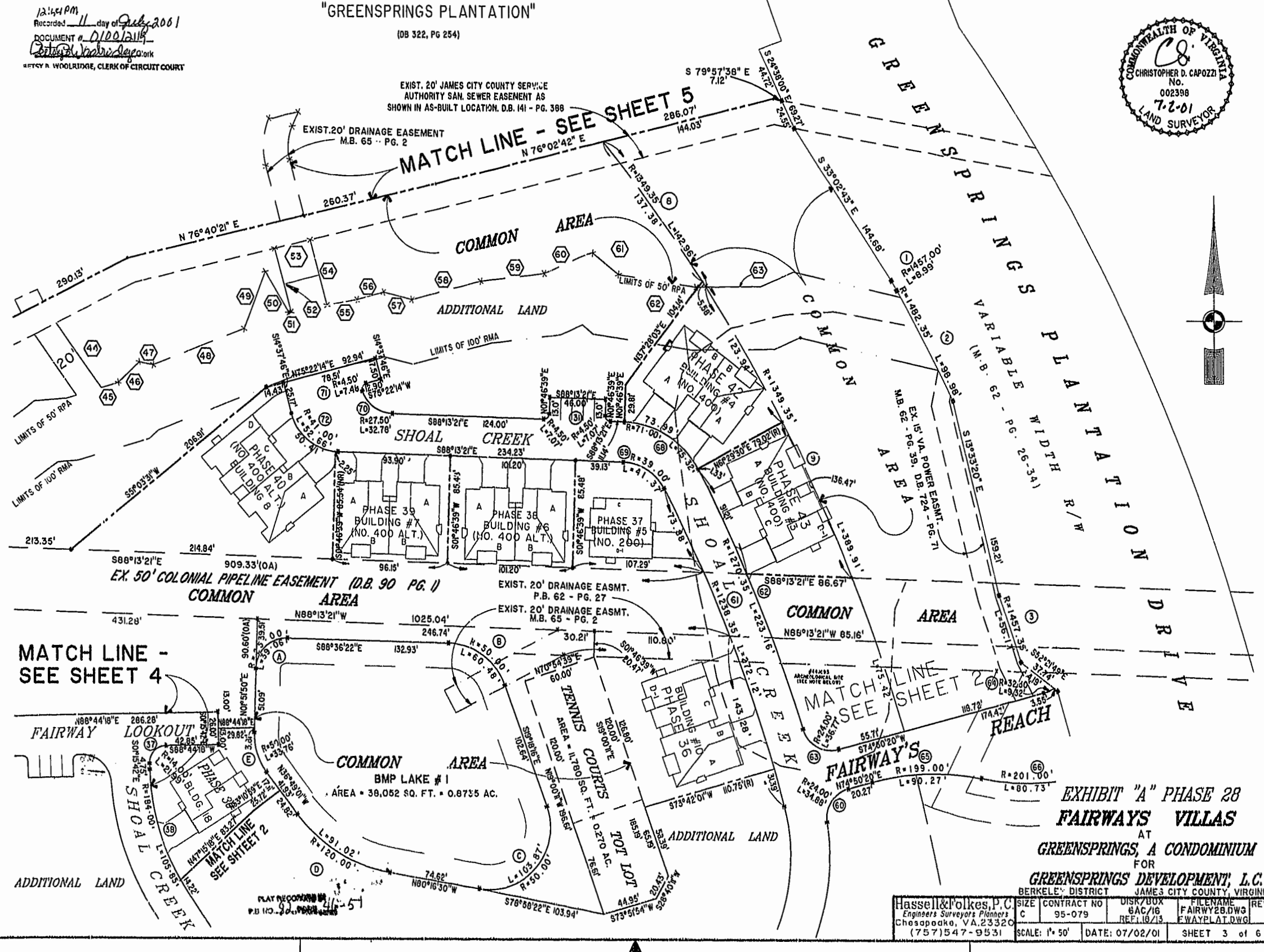
12:41 PM
Recorded 11 day of July 2001
DOCUMENT # 010012118
CITY OF WILLIAMSBURG
MITSY R. WOOLRIDGE, CLERK OF CIRCUIT COURT



EXIST. 20' JAMES CITY COUNTY SERVICE
AUTHORITY SAN. SEWER EASEMENT AS
SHOWN IN AS-BUILT LOCATION, D.B. 141 - PG. 388

EXIST. 20' DRAINAGE EASEMENT
M.B. 65 - PG. 2

MATCH LINE - SEE SHEET 5



MATCH LINE - SEE SHEET 4

MATCH LINE SEE SHEET 2

REACH

**EXHIBIT "A" PHASE 28
FAIRWAYS VILLAS
AT
GREENSPRINGS, A CONDOMINIUM
FOR
GREENSPRINGS DEVELOPMENT, L.C.**
BERKELEY DISTRICT JAMES CITY COUNTY, VIRGINIA

Hassell & Folkes, P.C. Engineers Surveyors Planners Chesapeake, VA 23320 (757) 547-9531	SIZE: C CONTRACT NO: 95-079 DISK/BOX: 8AC/16 REF: 18/13	FILENAME: FAIRWY28.DWG FWAYPLAT.DWG	REV: 1
SCALE: 1" = 50'	DATE: 07/02/01	SHEET 3 of 6	