

Williamsburg/James City County 12/15pm
 Recorded 9 day of July 2001
 DOCUMENT # 010012035
 Betsy B. Woolridge, Clerk of Circuit Court

PLAT RECORDED IN
 P.B. NO. 22 PAGE 41-43

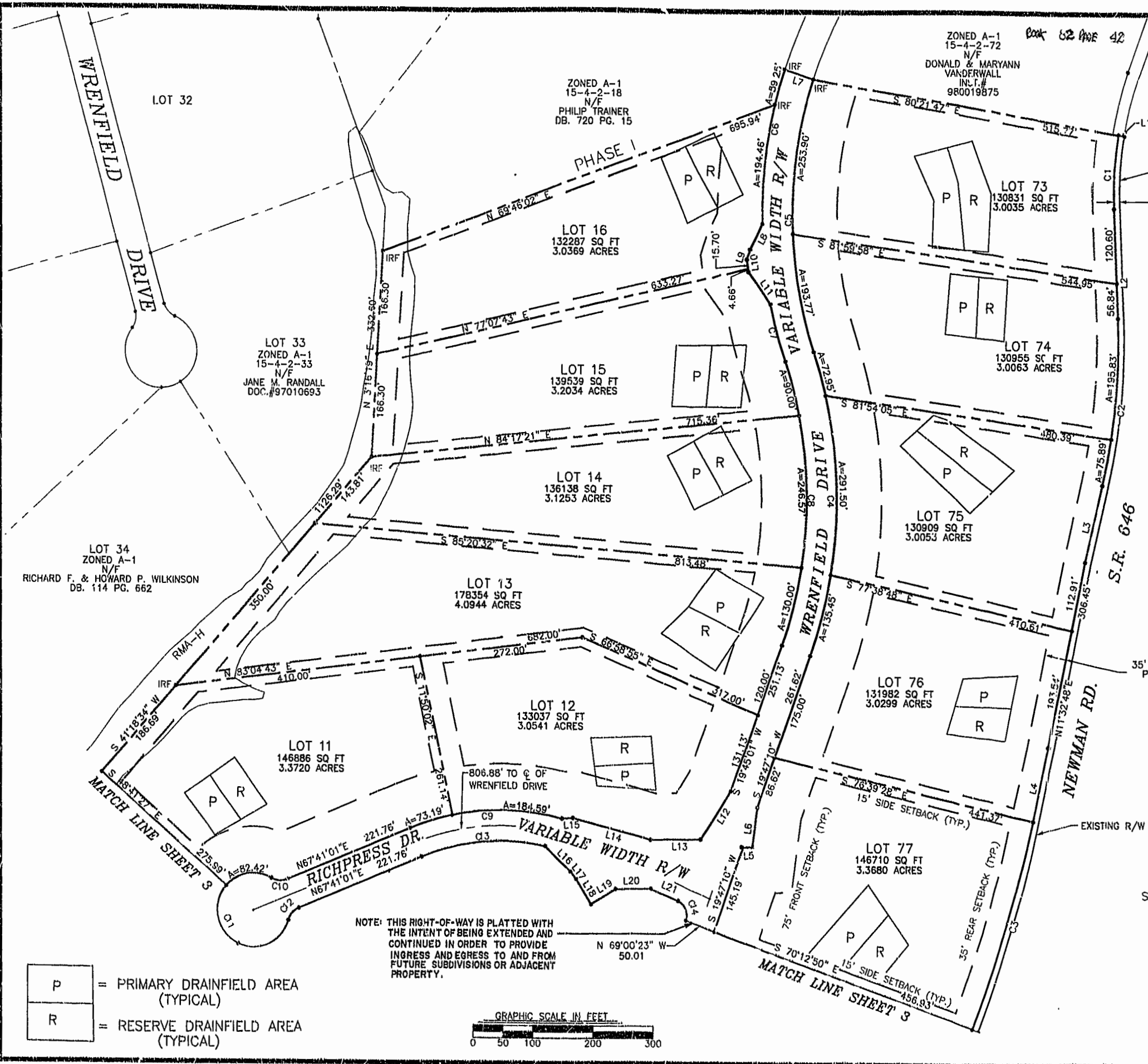
VIRGINIA STATE PLANE COORDINATE
 SYSTEM (SOUTH ZONE) (NAD 83)



35' REAR BUILDING SETBACK AND
 PROHIBITED ACCESS EASEMENT
 (TYPICAL 73-77)

WEXFORD HILLS
 PHASE IIIA
 BEING A SUBDIVISION OF
 PROPERTY OF
 HOWARD P. & RICHARD F.
 WILKINSON
 STONEHOUSE DISTRICT
 JAMES CITY COUNTY VIRGINIA
 SCALE: 1"=100' DATE: 04/24/01
 SHEET 2 OF 3

LANDMARK
DESIGN GROUP
 Engineers • Planners • Surveyors
 Landscape Architects • Environmental Consultants
 4029 IRONBOUND ROAD SUITE 100
 WILLIAMSBURG, VIRGINIA
 (757) 253-2975 FAX: (757) 220-0049



P = PRIMARY DRAINFIELD AREA (TYPICAL)
 R = RESERVE DRAINFIELD AREA (TYPICAL)

