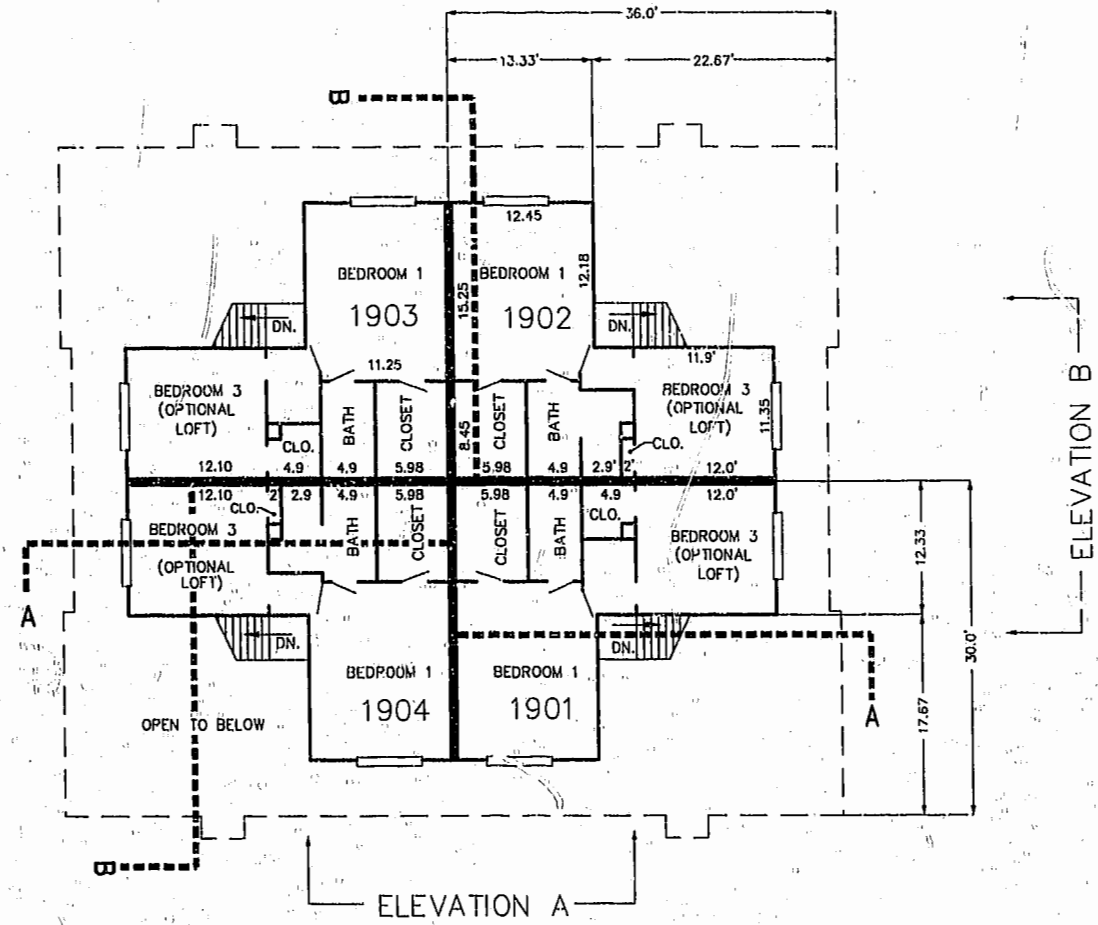


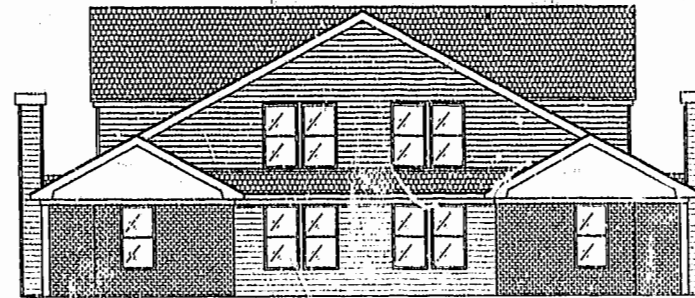
FIRST FLOOR PLAN
(UNIT #1902 IS TYPICAL)



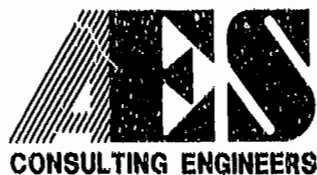
SECOND FLOOR PLAN
(UNIT #1902 IS TYPICAL)



ELEVATION A



ELEVATION B



5248 Olde Towne Road, Suite 1
Williamsburg, Virginia 23188
(757) 253-0040
Fax (757) 220-8994

PLAT OF CONDOMINIUM
WESTGATE AT WILLIAMSBURG,
A CONDOMINIUM
PHASE FIFTEEN
OWNED BY: 752 L.L.C.,
A VIRGINIA LIMITED LIABILITY COMPANY
CITY OF WILLIAMSBURG VIRGINIA



Williamsburg/James City County		PLAT RECORDED BY
Recorded 6 days on July 25, 2001	DOCUMENT # 01004	P.B. NO. 822 PAGE 35-40
BETSY B. WOOLRIDGE, CLERK OF CIRCUIT COURT		
No.	DATE	REVISION / COMMENT / NOTE
		BY

Designed GTW/ADS	Drawn JFS
Scale 1" = 10'	Date 5/25/01
Project No. 8395-6	
Drawing No. 5 OF 6	

05.23.01 - 05.38 8395P155.DWG