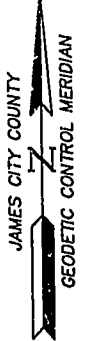
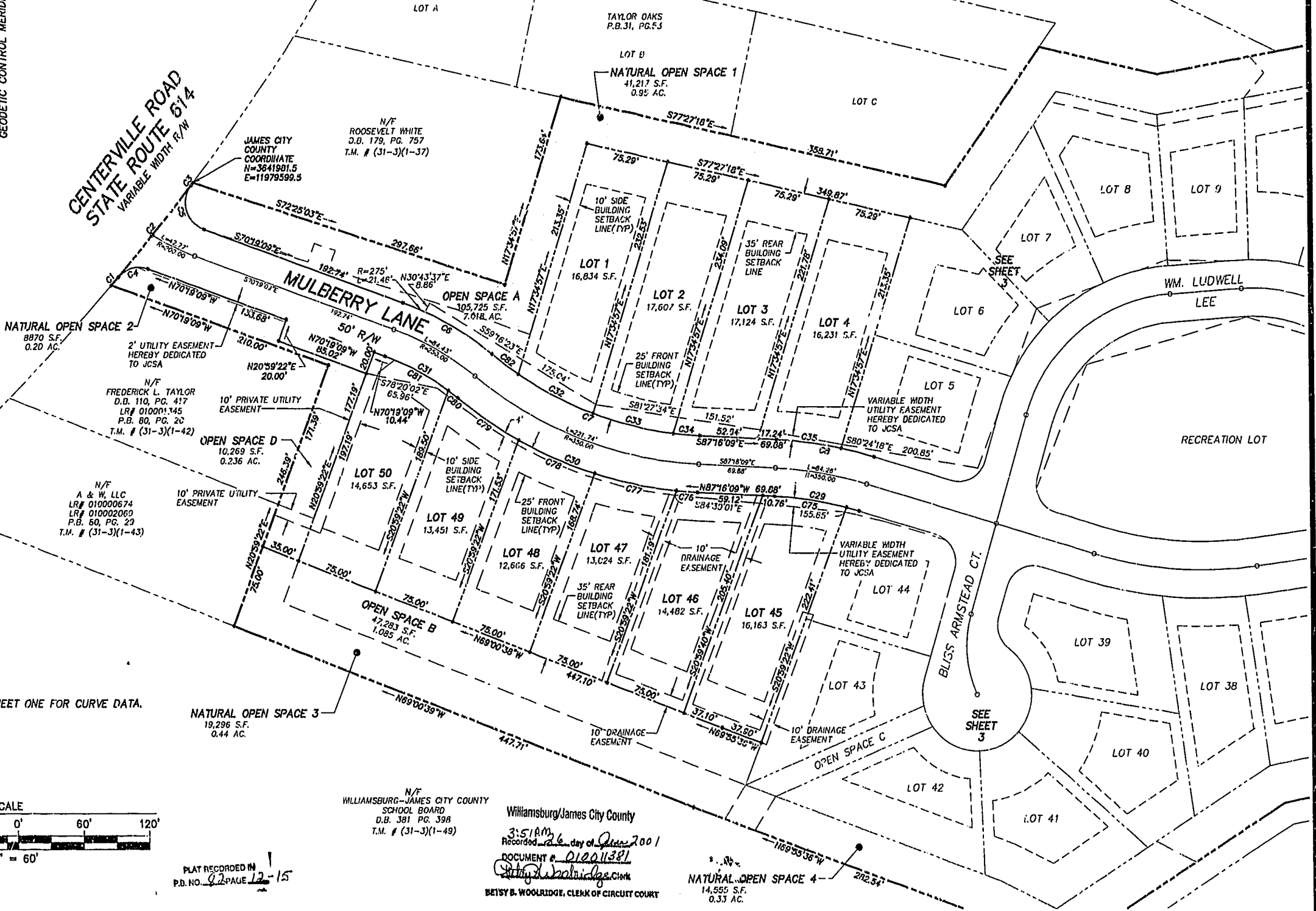


N/F
CORA LEE GREEN
D.B. 17, PG. 514
T.M. # (31-3)(1-35)



□ DESIGNATES NATURAL OPEN SPACE
TO BE DEDICATED TO JAMES CITY COUNTY
TOTAL AREA 1-8 = 5.63 AC.

CENTERVILLE ROAD
STATE ROUTE 614
VARIABLE WIDTH R/W



NATURAL OPEN SPACE 2
8870 S.F.
0.20 AC.

N/F
FREDERICK L. TAYLOR
D.B. 110, PG. 417
L.R.# 010001345
P.B. 80, PG. 20
T.M. # (31-3)(1-42)

OPEN SPACE D
10,269 S.F.
0.236 AC.

N/F
A & W, LLC
L.R.# 010000674
L.R.# 010002060
P.B. 80, PG. 20
T.M. # (31-3)(1-43)

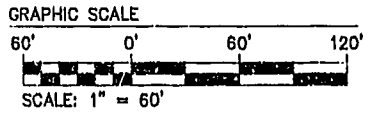
NATURAL OPEN SPACE 3
19,296 S.F.
0.44 AC.

N/F
WILLIAMSBURG-JAMES CITY COUNTY
SCHOOL BOARD
D.B. 381 PG. 398
T.M. # (31-3)(1-49)

Williamsburg/James City County
3:51 AM
Recorded on 26 day of June 2001
DOCUMENT # 010011381
Betty A. Woolridge, Clerk

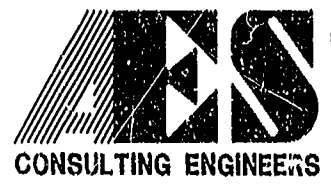
NATURAL OPEN SPACE 4
14,555 S.F.
0.33 AC.

*SEE SHEET ONE FOR CURVE DATA.



PLAT RECORDED IN
P.D. NO. 92 PAGE 12-15

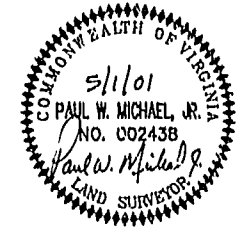
BEISY B. WOOLRIDGE, CLERK OF CIRCUIT COURT



5248 Olde Towne Road, Suite 1
Williamsburg, Virginia 23188
(757) 253-0040
Fax (757) 220-8994

SUBDIVISION PLAT
OF
MULBERRY PLACE

POWhatan DISTRICT JAMES CITY COUNTY VIRGINIA



No.	DATE	REVISION / COMMENT / NOTE	BY
2	6/8/01	REV. PER COUNTY COMMENTS	HWP
1	5/1/01	REV. PER COUNTY COMMENTS	PWM

Designed AES	Drawn PWM
Scale 1"=60'	Date 2/14/01
Project No. 8604	
Drawing No. 2 OF 4	