

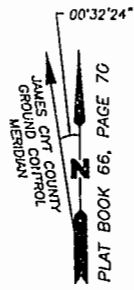
PLAT OF SUBDIVISION  
WATERFORD  
AT  
POWHATAN SECONDARY  
PHASE SIXTEEN  
BERKELEY DISTRICT  
JAMES CITY COUNTY, VIRGINIA

DATE: 10/21/98 SHEET 2 OF 3 SCALE: 1"=100'

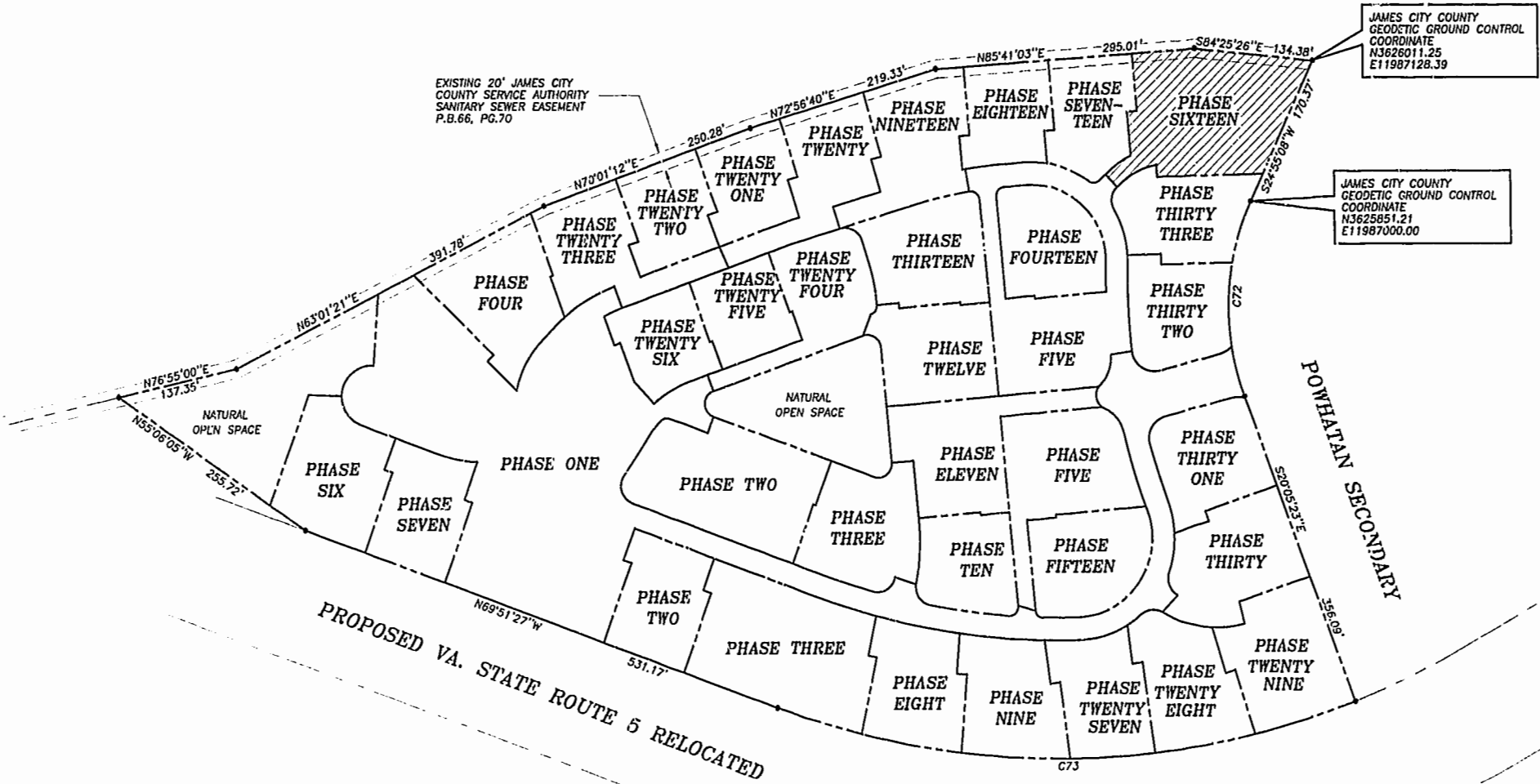
PROJECT NO: 97-008 DRAWN BY: SJB



SLEDD & ASSOCIATES, P.C.  
ENGINEERS PLANNERS SURVEYORS  
11832 ROCK LANDING DRIVE, SUITE 203  
NEWPORT NEWS, VIRGINIA 23606  
(757) 873-3386

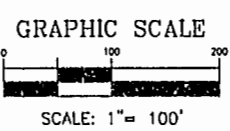


NOW OR FORMERLY  
POWHATAN ENTERPRISES, INC.



CURVE DATA

NUMBER	DELTA	RADIUS	LENGTH	TANGENT	CHORD	CHORD BEARING
C72	45°00'31"	280.00'	219.95'	116.00'	214.34'	S02°24'52"W
C73	41°26'14"	924.91'	668.91'	349.84'	654.43'	S89°25'26"W



Williamsburg/James City County  
3:18 AM, 7 day of Jan 2001  
Recorded...  
DOCUMENT # 01000100  
Betsy B. Woolridge, Clerk  
BETSY B. WOOLRIDGE, CLERK OF CIRCUIT COURT