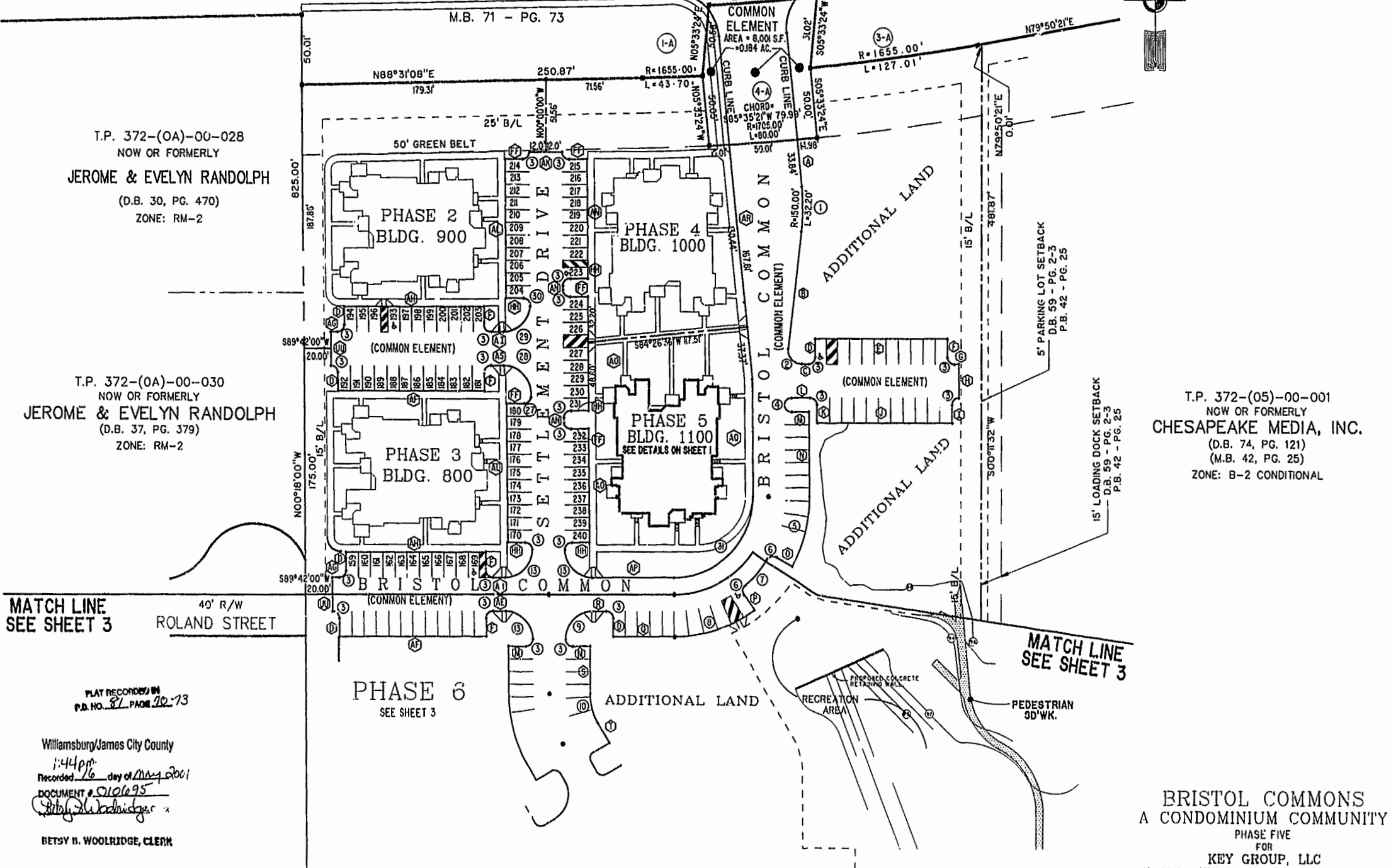
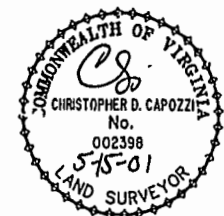


COLLEGE OF WILLIAM & MARY

IRON BOUND ROAD



MATCH LINE
SEE SHEET 3

MATCH LINE
SEE SHEET 3

PLAT RECORDED IN
P.D. NO. 21 PAGE 22-73

Williamsburg/James City County
1:44pm
Recorded 16 day of May 2001
DOCUMENT # 010695
Betsy B. Woolridge, C.L.E.K.

BETSY B. WOOLRIDGE, CLEK

BRISTOL COMMONS
A CONDOMINIUM COMMUNITY
PHASE FIVE
FOR
KEY GROUP, LLC
CITY OF WILLIAMSBURG, VIRGINIA

Hassell & Polkes, P.C. Engineers Surveyors Planners Chesapeake, VA 23320 (757)547-9531	SIZE C	CONTRACT NO. 98062	DISK/BOX 1236/15	FILENAME BRISTOL5.JWG	REV
SCALE: 1"=50'		DATE: 05/08/01		SHEET 2 of 4	