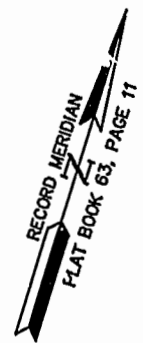
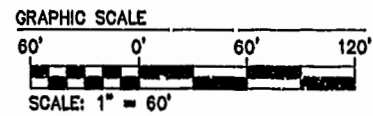


NOTE:  
AT THE TIME OF THIS SURVEY  
ROADS AND SIDEWALK ARE UNDER  
CONSTRUCTION. (PROPOSED  
LOCATION SHOWN). WATER &  
& SANITARY SYSTEM ARE IN PLACE.



NOTE:  
THE AREAS OF PARCEL ONE AND PHASE ONE NOW  
REFLECT THE PROPOSED SUBDIVISION OF PARCEL  
ONE AS SHOWN BY A PLAT BY AES CONSULTING  
ENGINEERS ENTITLED "PLAT OF SUBDIVISION  
SHOWING PARCEL 1A CONTAINING 0.978 ACRES±  
OWNED BY 752 L.L.C." DATED 11/22/2000.

**AREA**

TOTAL AREA PARCEL 1= 10.935 AC±

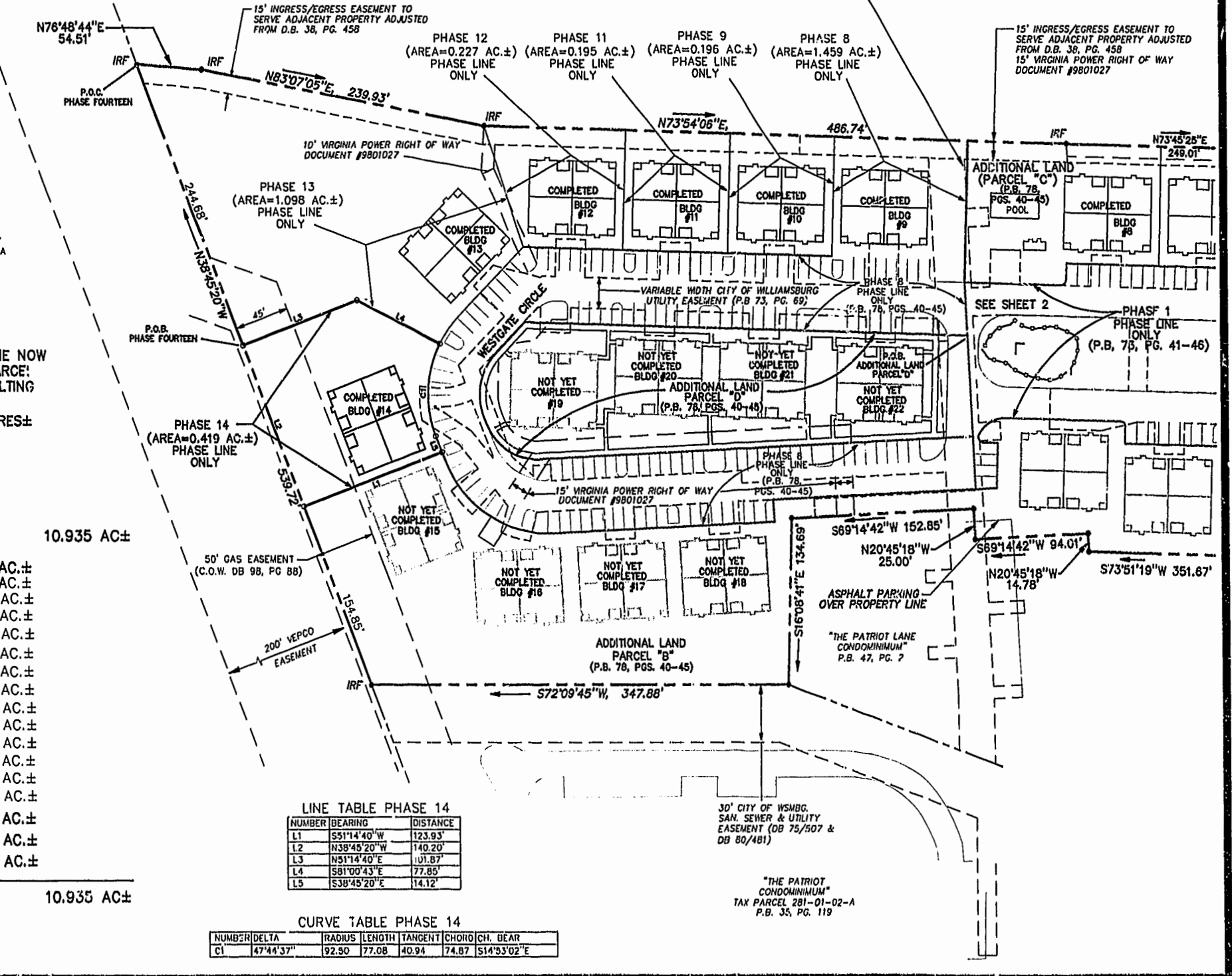
PHASE FOURTEEN=	0.419 AC.±
PHASE THIRTEEN=	1.098 AC.±
PHASE TWELVE=	0.227 AC.±
PHASE ELEVEN=	0.195 AC.±
PHASE TEN=	0.222 AC.±
PHASE NINE=	0.196 AC.±
PHASE EIGHT=	1.459 AC.±
PHASE SEVEN=	0.216 AC.±
PHASE SIX=	0.343 AC.±
PHASE FIVE=	0.235 AC.±
PHASE FOUR=	0.200 AC.±
PHASE THREE=	0.196 AC.±
PHASE TWO=	0.195 AC.±
PHASE ONE=	2.377 AC.±
ADDITIONAL AREA (PARCEL "B")=	2.068 AC.±
ADDITIONAL AREA (PARCEL "C")=	0.396 AC.±
ADDITIONAL AREA (PARCEL "D")=	0.893 AC.±
<b>TOTAL=</b>	<b>10.935 AC±</b>

**LINE TABLE PHASE 14**

NUMBER	BEARING	DISTANCE
L1	S51°14'40"W	123.93'
L2	N38°45'20"W	140.20'
L3	N51°14'40"E	101.87'
L4	S81°00'43"E	77.85'
L5	S38°45'20"E	14.12'

**CURVE TABLE PHASE 14**

NUMBER	DELTA	RADIUS	LENGTH	TANGENT	CHORD	CH. BEAR
C1	47°44'37"	92.30	77.08	40.94	74.87	S14°53'02"E



**PLAT OF CONDOMINIUM  
WESTGATE AT WILLIAMSBURG,  
A CONDOMINIUM  
PHASE FOURTEEN  
OWNED BY: 752 L.L.C.,  
A VIRGINIA LIMITED LIABILITY COMPANY  
CITY OF WILLIAMSBURG VIRGINIA**

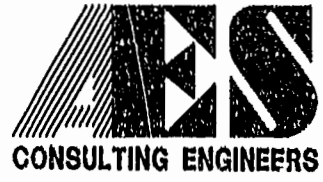


Williamsburg/James City County

Recorded 15 day 02/14/2001  
DOCUMENT # 020683 11:31 AM  
RETSY S. WOOLIDGE, CLERK OF CIRCUIT COURT

No.	DATE	REVISION / COMMENT / NOTE	BY

Designed	GTW/ADS	Drawn	JFS
Scale	1" = 60'	Date	4/24/01
Proj. No.	8395-6	Drawing No.	3 OF 6



5248 Olde Towne Road, Suite 1  
Williamsburg, Virginia 23188  
(757) 253-0040  
Fax (757) 220-8964

04.23.01-10.1R 8395P1.dwg JFS